



NOTICE OF BID

Notice is hereby given that sealed bids will be received by the Board of Park Commissioners of the Glencoe Park District, Glencoe, Illinois for the following: 2014 15 Passenger Bus with Wheelchair Lift. The bid packet and specifications are now available at the Park District office.

Sealed bids will be received until Monday, May 12, 2014 at 1:00 P.M. at the office of the Park District at 999 Green Bay Road, Glencoe, Illinois 60022 at which time all bids will be publicly opened and read.

Bidders are required to use the proposal forms supplied within the specifications. All sealed bids must be enclosed in a sealed envelope and marked in Bold print on the outside Bid Proposal for 2014 15 Passenger Bus with Wheelchair Lift. Proposals should be addressed to the Glencoe Park District attention, Dave Figgins, Director of Recreation and Facilities, at 999 Green Bay Road, Glencoe, Illinois, 60022.

The Board of Park Commissioners of the Glencoe Park District, Cook County, Illinois reserves the right to reject any or all bids and waive any informalities, irregularities or technicalities to bidding and to accept any bid that it determines in its sole discretion in the best interest of the Glencoe Park District.

Any questions regarding the specifications or bid information must be directed to Dave Figgins, Director of Recreation and Facilities, at (847) 835-7535 or dfiggins@glencoe parkdistrict.com prior to bid submitting.

By the order of the Board of Park Commissioners of the Glencoe Park District, Glencoe, Illinois.

**GLENCOE PARK DISTRICT
BID REQUIREMENTS AND INSTRUCTIONS**

- All prices listed in bids must be guaranteed through September 1, 2014.
- Prior to submitting bid, Contractors must fully complete the bid proposal forms. Failure to complete said forms may result in rejection of bid.
- Contractors are hereby notified that pursuant to 5 ILCS 140/7 (2) any record of a contractor that relates directly to a governmental function being performed by the Contractor pursuant to this Contract is considered a public record of the Glencoe Park District for purposes of the Freedom of Information Act, and upon request of the Park District's FOIA Officer, Contractor shall within two (2) business days turn over to the FOIA Officer any record requested that is in possession of the Contractor.
- The Glencoe Park District is exempt of Federal Excise Tax and State of Illinois Sales Tax.
- Current picture of bus being bid on must accompany proposal.
- Contractors should supply the Park District with three references of businesses that provide similar services. Failure to provide said reference may result in rejection of the bid.

Specifications

2014 23' Glaval 12 & 2 Universal Bus with Wheelchair Lift

Proposal Specifications For A New Wheelchair Transit Vehicle

The purpose of these specifications is to describe a specially equipped Wheelchair Transit Vehicle with the capacity of transporting Two (2) wheelchair passengers or fourteen (14) seated passengers, plus an automatic wheelchair lift. The vehicle shall meet all applicable FMVSS, American with Disabilities Act (ADA), and Society of Automotive Engineers (S.A.E.) recommended practices. Vehicle must not require CDL driver's license to operate in the State of Illinois.

Chassis

Ford E-350, 158" WB, 5.4L V8, 12,500 GVWR-Door Delete

Exterior Floor

2" x 2" 13 ga. "Flo-Coat" (galvanized) cross members welded on 24" centers

6" x 1 3/4" galvanized longitudinal hat channel running the entire length of the floor welded to the cross members

Wheel wells one-piece 14 ga. (minimum) flat galvanized steel

Sidewalls

FRP Sidewalls

Exterior fiberglass reinforced panels

1 1/2" x 1 1/2" 18 ga. "Flo-Coat" (galvanized) tubes welded on 24" centers

C-Channel welded to the bottom of the wall and a 1 1/2" galvanized angle welded at the top

Wall cavities filled with 1 1/2" block foam insulation

Insulation meets a value of R-7

Interior panels 3.2 mm gray vinyl covered lauan

Components vacuum laminated using water activated urethane adhesive

Roof

1 1/2" x 1 1/2" 18 ga. "Flo-Coat" (galvanized) formed bows welded on 24" centers

Roof bows seated into a 1 1/2" galvanized C-Channel bottom rail

Exterior skin one piece .045 filon / fiberglass composite laminated to 2.7 mm lauan

Cavities of the roof structure filled with expandable spray foam insulation

Insulation meets a value of R-6

Interior panels 3.2 mm gray vinyl covered lauan

Roof components compression laminated using a water activated urethane adhesive

Rear Wall

1 1/2" x 1 1/2" 18 ga. "Flo-Coat" (galvanized) tubing

Exterior skin .024" galvanized steel with white exterior face laminated to 2.7 mm lauan

Wall cavities filled with 1 1/2" block foam insulation

Insulation meets a value of R-7

Interior panels 3.2 mm gray vinyl covered lauan

Components vacuum laminated using water activated urethane adhesive

Fiberglass Front

Front cap three fiberglass components, a front overhead cap, a driver's side transition panel, and either a Mor-view or a curbside transition panel

Panels overlap the roof and sidewalls mechanically fastened at the seams with an aluminum trim and vinyl cover

ABS Rear

Rear cap five ABS components, a top halo and both an upper and a lower vertical piece on each side

Panels overlap the roof and sidewalls mechanically fastened at the seams with aluminum trim and vinyl cover

Assembly

Floor structure bolted to the chassis frame

¼" rubber isolator between the hat channel and the chassis frame rail running the length front to back and fastened down using ½"-13 grade 5 bolts torqued to 49-59 ft-lbs.

Sidewalls fastened to the floor structure with 3/8"-16 grade 5 bolts passing through the bottom C-channel into mounting tabs welded to the floor cross members every 24"

Roof fastened to the sidewall structures with 3/8"-16 grade 5 bolts passing through the roof C-channel into the sidewall top angle every 24"

Rear wall welded to the sidewall, roof, and floor structures at mounting tabs located at points around the perimeter of rear wall

Front cap, rear cap, and door seams trimmed with aluminum trim channel with a white vinyl cover

Fasteners exposed to the elements constructed of zinc, stainless steel, or black oxide.

Windshield

OEM one-piece laminated safety glass with an AS-1 rating

Driver side Window

Manual opening and tempered or laminated safety glass with an AS-2 rating

Passenger Windows

No T-slides

Bonded windows throughout the vehicle

Interior clamp ring and a bulb seal to allow water tight fit

Emergency Windows

Constructed in the same manner, capable of being opened in an emergency situation

Top hinge and heavy duty red handles which when released allow the window to open

Clearly labeled with instructions of operation in a visible location on window

The number of passengers designates the quantity

Filler windows 22 ½", or 20 ½"w x 32 ½"h fixed style window

All Passenger windows AS-3 rating and compliant with FMVSS 217

Rear Emergency Window

Fixed style egress window

60" w x 22 ½" h with a 20% light transmitting tint and an AS-3 rating

Full View Curb Transition Window in lieu of passenger Door

Clear tempered glass that has a viewing area of approximately 396 sq.in. and an AS-2 rating

Drip Rail

Continuous rain gutter along both sides of vehicle ensuring water is diverted from entrance locations

Undercoating

Underbody sprayed with tough, pliable, corrosion protectant material with sound-deadening properties in accordance with chassis manufacturer's guidelines

Doors

Entry door surround integrally welded galvanized construction and installed as a single unit
Components minimum 14 ga. with all welds being treated with cold galvanized spray or other corrosion resistant material

Surround welded to the wall and floor

Entry doors are to be two outward opening panels utilizing either a manual or electric controller operable from the driver's seated position

Constructed of aluminum extrusions which encapsulate the full-length glass

Doors incorporate center overlapping rubber seals and bottom brush seals

Door clear opening after install is 30" wide by 82 ½" high

Wheelchair Lift and/or Rear Door Construction

Door structure constructed of 1" x 1" and 1-1/2" x 1" aluminum tubing with a 2" x 1" center support

Exterior skin .024" galvanized steel with white exterior face laminated to 2.7 mm lauan

Cavities of the door structure filled with 1" block foam insulation

Insulation meets a value of R-5

Door components vacuum laminated using water activated urethane adhesive

Interior panels 3.2 mm gray vinyl covered lauan

Two (2) stainless steel strap hinges per panel attached with stainless fasteners

Hardware fastened to structural members welded to the inner door frame

Lift Door Hardware

Door panel utilizes 2-pt locking system

Lift door single panel t-style hold open device and plunger

Window AS3 rating with 20% light transmitting tint

Single door window 32 ½" w x 32 ½" h.

Interior

Interior Roof

Interior liner multi-piece design

Alum H-rails mechanically fastened longitudinally to the roof rails running from front to back

Plastic divider bar horizontally across the rear roof bow and mechanically fastened

Depending upon the liner material used, either a wood strip backer or a double sided foam tape applied to the back side of the liner

Urethane adhesive applied to roof bows

Liner placed onto the roof structure edges slid into the plastic divider bars

Panels mechanically fastened into each roof bow

Roof constructed to prevent vibration, drumming, and flexing

Interior Trim

Cab ceiling liner constructed in the same manner as the body liner

Front and sides trimmed with a combination of ABS and fabric covered plywood

Stanchions

1 1/4" diameter 18 ga. stainless steel tubes attached to structural members

Aft of the entry door

Left-hand handrail incorporated into the entry stanchion assembly oriented to follow the slope of the steps to assist passengers when entering or exiting the vehicle

Modesty Panels

Gray Rontex (a fabric/carpet backer type of material) adhered to 3/8" plywood panel and trimmed with metal C-channel on exposed edges

Fastened to stanchion assemblies in the vehicle

Standard aft of the entry door

Panel 18"w x 21"h.

Floor

Covered with 5/8" marine tech 7-ply plywood

Attached with a polyurethane adhesive sealant and mechanically fastened into the cross members

Sealed to keep outside elements from entering the vehicle with expandable, polyurethane spray foam

Floor Covering

Altro Flooring throughout the vehicle. Smooth under the seats and ribbed in the aisle and entry steps

Full-length cove molding 9" up the sidewall and trimmed with Rontex covered lauan

Yellow entry step nosing

Altro on the sides and vertical risers

Electrical

Panel

Combination of relays, manual reset breakers, and diagnostic LED fuses

Installed above the driver's seat in a compartment with a hinged door and ¼ turn thumb latch allowing access to all electrical circuits

Wiring diagram (electrical legend) installed on the interior of the compartment door

Console

Ergonomically designed ABS driver console with cup holder mounted within reach of the driver

Add on accessory switches installed in a switch plate mounted into the console

Switches backlit clearly marked with permanent labels

Battery

Dual HD batteries supply 12 volt power

Wiring

Meets FMVSS and SAE regulations, standards and practices

Color, number, and function coded

Function coding at a minimum of every 6"

Installed in convoluted split loom

Loomed harnesses secured to structural members to prevent chaffing, cuts, rattling, pinching or any damage to harnesses or other components in surrounding areas

Loomed wire harnesses will have weatherproof connectors

Exterior electrical terminations sprayed with corrosion resistance spray

Lighting

OEM Lighting

Front headlights and turn signals chassis OEM

Exterior Lighting

Exterior lighting standard incandescent lights with LED upgrades available

Clearance lights

(5) front amber lights

(5) rear red lights

(2) rear side lower red lights

Tail lights

(2) round amber turn signals

(2) round red stop lights

(2) round white back up lights

An oval rear center mount red brake light installed above the rear window/door

Lighted ABS license plate holder installed on the roadside lower rear wall

Interior Lighting

Driver's dome light mounted in the cab area

Passenger lightbar lights installed above each window location

Stepwell Lighting

Two LED lights installed in the entry step well, one on each side

Reflectors

Installed in the following locations:

- (2) red – on the rear bumper or rear wall
- (2) red – one under each lower side marker light
- (2) amber – one under each side turn signal (if applicable)

Seating

Driver Seat

Standard driver seat OEM supplied

Seat Track

Track installed on the sidewall and the floor for seat installation in locations for optioned seating on orders

Track is welded to the sidewall and floor structures every 24"

Slide inserts are placed into this track to fasten the seats

Passenger Seats

Six (6) feather weight 17.5" mid high double rigid

Two (2) 17" Freedman mid high single flips

Freedman style mid high feather weight Level IV

Grab handles on outside and inside seats excluding the back row and 2 flip seats

Antimicrobial vinyl

Level IV Freedman Seat Covers stain resistant

Seatbelt

A 74" manual lap belt

Seat belt assemblies meet FMVSS 209, 302 and SAE J386.

Lift

Braun Century Rear Lift

Wheelchair Equipment

Lift Platform Installation

Flat steel plate welded directly onto the floor assembly structure to become the lift platform

Galvanized metal formed to create a pan and placed onto the flat steel plate

Vinyl backer adhesively bonded to this platform for noise reduction and insulation

Aluminum trim mechanically fastened to the platform and surround for a clean finished look

No plywood located between the lift and the structure

Lift Door Installation

Lift frame surround built into the sidewall assembly structure

Surround is trimmed with aluminum adhesively sealed and mechanically fastened

Lift door attached and fastened into structural steel

Rubber seals installed around the perimeter of the surround and the entire assembly sealed

Lift Installation

Mounted directly to the platform providing superior strength and allowing for constant torque and stability

Installed according to the lift manufacturer's installation instructions

Installation meets FMVSS 403 and 404 requirements

L-Track Installation

The plywood floor routed out to recess the L-track flush to the floor

L-track installed with F-type fasteners and standard bolts

L-track installation meets manufacturer's recommended installation instructions and ADA compliance

Bumpers

Front bumper chassis OEM standard.

Rear bumper assembly 10ga black powder coat steel with 4ga bumper brackets

Mounted directly to chassis frame structure using 1/2"-13 grade 8 bolts

Skirting

Exterior skirting .024" galvanized steel with a white exterior face

Galvanized angled skirt braces welded onto the bottom of the wall and cross members

Skirting overlapping the sidewall skin

Polyurethane adhesive added to the vertical skirt braces

Skirting mechanically fastened to the sidewall and to the bottom of the skirt braces

Skirt seam trimmed with an aluminum trim channel with a white vinyl cover

Mud Flaps

Installed on the rear wheels allowing for clearance of the tires, exhaust and ground

Dimension is 18"w x 24"h.

Mirrors

Exterior remote and heated velvac mirrors driver and passenger side. Break away type. Dual lens.

Paint

The exterior finish is white to match chassis OEM white

Testing / Certifications

Altoona tested

FMVSS & CMVSS certified

ADA, Ford QVM, & ISO compliant

Adheres to chassis body builder guidelines

Air Conditioner

60,000 BTU

Non-tie in system

Dual Compressor

Heat

65,000 BTU floor mounted

Warranty

Glaval 5-year / 100,000-mile bumper to bumper warranty

Vehicle pick up and drop off for all warranty and service work

Miscellaneous

Drivers Compartment

Overhead Storage Compartments no lights underneath

Backup Camera

Request for Bid
2014 15 Passenger Bus with Wheelchair Lift

By signing below you acknowledge and agree to all Bid Instructions and Specifications for this proposal.

This signature page must be included with your proposal.

BY:

(Company)

(Authorized Signature)

(Date)

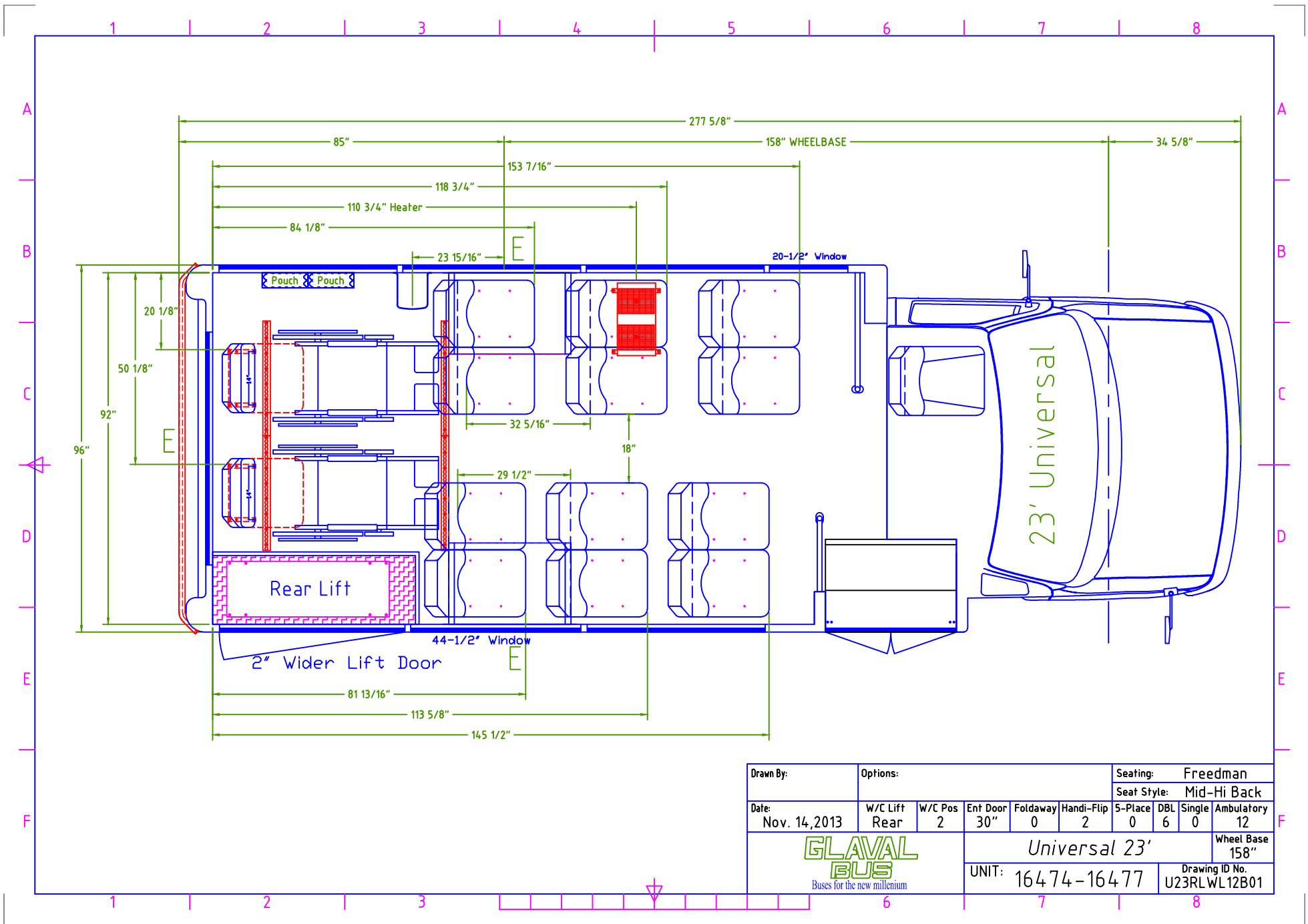
(Address)

(City, State, Zip)

(Phone)

(E-mail)

Bid Price _____



Drawn By:	Options:						Seating: Freedman				
Date:	W/C Lift Rear						Seat Style: Mid-Hi Back				
Nov. 14, 2013	W/C Pos	Ent Door	Foldaway	Handi-Flip	5-Place	DBL	Single	Ambulatory	Wheel Base		
	2	30"	0	2	0	6	0	12	158"		
GLAVAL BUS Buses for the new millennium									Universal 23'		
UNIT: 16474-16477							Drawing ID No. U23RLWL12B01				