



**GLENCOE PARK DISTRICT  
COMMITTEE OF THE WHOLE MEETING  
Tuesday, February 5, 2019 - 7:00pm  
Takiff Center**

Consistent with the requirements of the Illinois Compiled Statutes  
5 ILCS 120/1 through 120/6 (Open Meetings Act), notices of this meeting were posted.  
Location of the meeting is the Takiff Center, 999 Green Bay Rd, Glencoe, IL 60022

**AGENDA**

- I. Call to Order
- II. Roll Call
- III. Matters from the Public
- IV. GYS/SNAP and GJHP Stipend Requests (GYS pgs. 3-13) / (GJHP pgs. 15-34)
- V. FY2019/20 Budget – First Draft Review (pg. 35 - refer to budget binder)
  - A. Operational Budget Review
    - Budget Summaries
    - Corporate Fund - Administration, G & A Department, Parks/Maintenance, Watts, Beach/Boathouse
    - Recreation Fund – Administration/Takiff Center, Recreation Programs, Children’s Circle
    - “Minor” Funds – Special Recreation, Pension/Retirement, Bond and Interest, Liability Insurance, Workers’ Compensation, Audit
  - B. Proposed Capital Projects
  - C. Discussion of Proposed Special Events – FY2019/20
  - D. Discussion of Proposed Conferences/Training – FY2019/20
  - E. Discussion of Proposed Annual Salary Merit Pool – FY2019/20
  - F. Discussion of Employee and Commissioner Fitness Area Benefit
- VI. Discussion on Old Green Bay Trail Project (pgs. 37-182)
- VII. Other Business
- VIII. Adjourn

The Glencoe Park District is subject to the requirements of the Americans with Disabilities Act of 1990. Individuals with disabilities who plan to attend this meeting and who require certain accommodations in order to allow them to observe and/or participate in this meeting, or who have questions regarding the accessibility of the meeting or facilities, are asked to contact the Park District at 847-835-3030. Executive Director E-mail address: lsheppard@glencoe parkdistrict.com

## **IV. GYS/SNAP Stipend Request**

Glencoe Park District  
February 5, 2019  
Committee of the Whole Meeting



## Glencoe Youth Services

P.O. Box 316 • Glencoe, IL 60022  
847-835-3121 • [GlencoeYouthServices.org](http://GlencoeYouthServices.org)

Glencoe's Teen Center Since 1971

---

*GYS Executive Director*  
Margaret Ann Paauw

#### BOARD OF DIRECTORS

*President*  
Jennifer Adler

*Members*  
Dr. Steve Best  
Walter Calhoun  
James Conte  
Britt Durkin  
Judy Gordon  
Debbie Jha  
Alex Kaplan  
Liz McClain  
Jodi Newmark  
Gina Parisi

#### YOUTH BOARD

*Presidents*  
Sylvia Miller  
Matthew Crasco

*Members*  
Griffen Barr  
Andrew Brilliant  
Ethan Santiccioli  
Will Slavinsky  
Will Thornton

#### SUPPORTING ORGANIZATIONS

Am Shalom  
Carmel Presbyterian Church  
Glencoe Park District  
New Trier Township  
North Shore Community  
Bank & Trust  
North Shore United Methodist  
Church  
St. Elisabeth's Episcopal Church  
Village of Glencoe

*GYS is a 501(c)(3)  
tax-exempt organization.*

January 4<sup>th</sup>, 2019

Dear Park Board Members,

Enclosed is the 2017-2018 annual report for Glencoe Youth Services. We are requesting \$11,000 in funding for Glencoe Youth Services and \$3,000 for the Special Needs Adult Pals program (SNAP, formerly known as the Young Adult Program) from the Glencoe Park District for the 2019-2020 fiscal year.

In 2017-2018, GYS had over 200 individual youth visit a total of 2,748 times. We continue to offer recreational drop in services with programs including gaming tournaments, crafts, cooking, trivia, and much more. We are especially pleased with the engagement of our youth board, comprised of high school students from New Trier Township and Loyola who are seen as mentors for our middle school kids. This year, we began to offer GYS as a field placement site to master's level social work students. This coming year, we are planning on offering parent seminars and support groups in addition to our regular programming.

We are also particularly proud to host the Special Needs Adult Program (SNAP) which is the only recreational program of its kind in the greater Chicagoland area. SNAP continues to meet a large need within the local and greater community. In addition to programming, SNAP offers a free meal every week based on donations from local community members which has been a great way to get the community to engage with our organization. We have also fostered a large pool of teen volunteers, who come to the program each week and have now become passionate advocates for adults with disabilities.

We would like to thank the Park District for the significant and continuing support you have provided GYS and SNAP since our inception. The list of contributions the Park District has made to Glencoe Youth Services is long and varied from the provision of Holmes Shelter, the use of other park district properties, fundraising opportunities, and a significant annual financial contribution. We are sincerely grateful for all the support, financial and otherwise, the Park District has provided to GYS and SNAP/YAP over the years.

Thank you for your consideration of this request. Please feel free to contact me if you have any questions or require further information.

Sincerely,

Margaret Ann Paauw, LCSW  
Executive Director  
Glencoe Youth Services  
847-835-3121

## Statistics Breakdown

Glencoe Youth Services operates two separate programs: Glencoe Youth Services' Youth Center and the Special Needs Adult Program. Both run independently but both utilize the center for drop-in and other programming.

### 1. Glencoe Youth Center

Drop-In Hours: Mondays-Fridays 3pm-6pm and Saturdays 1pm-5pm. Drop-in hours will remain the same in addition to special programming.

Glencoe Youth Services (GYS), founded in 1971, is a drop-in youth center providing recreational activities and social services opportunities for 6<sup>th</sup>-12<sup>th</sup> grade youth. Located in the Holmes Warming House, in between Central School and Melvin Berlin Park, GYS is open every day after school and on Saturdays during the day. The youth center provides a welcoming atmosphere where youth relax, talk with friends, and engage in their choice of many recreational activities, such as video games, crafts, board games, movies, and cooking. Our participants also engage in social services activities such as Operation Gratitude, A Just Harvest, and Cradles to Crayons. GYS is active at the 4<sup>th</sup> of July Festival, Harvest Fest, Movies on the Green and hosts many other community programs throughout the year. Over the course of the next year, we plan on continuing to provide a variety of programming such as video game tournaments, crafts, social service opportunities, and cooking classes. In addition, we are planning on hosting parent workshops, support groups, and continue to provide supervision for master's level social work students from Loyola University Chicago and Aurora University.

<b>Hometown</b>	<b># of Youth</b>
Glencoe	153 (74%)
Winnetka	14 (7%)
Wilmette	23 (11)
Kenilworth	2 (1%)
Northfield	4 (1%)
Other	13 (6%)
<b>TOTAL</b>	<b>209</b>

<b>Grade</b>	<b>Male</b>	<b>Female</b>	<b>Total</b>
6 <sup>th</sup>	18	14	32
7 <sup>th</sup>	13	20	33
8 <sup>th</sup>	19	8	27
9 <sup>th</sup>	31	9	40
10 <sup>th</sup>	13	5	18
11 <sup>th</sup>	13	12	25
12 <sup>th</sup>	14	11	25
Returning/ Alumni	8	1	9
<b>TOTAL</b>	<b>129</b>	<b>80</b>	<b>209</b>



## 2. The Special Needs Adult Program (SNAP)

Hours: Tuesdays 6pm-9pm

Glencoe Youth Services hosts the SNAP program every Tuesday night. SNAP provides recreation, support, and advocacy for adults with a wide range of disabilities. Participants meet new people, develop friendships, engage in activities, attend educational presentations, go on outings, and enjoy any of the entertainment options that GYS offer, including computers, video games, board games, and TV. SNAP also provides a free dinner every week based on donations from the community. SNAP is requesting more operating funds for this year with plans on expanding to a second night every week targeted at young adults ranging from 17-25 years of age who are transitioning out of New Trier High School's special education program.

<b>Home Town</b>	<b># of Participants</b>	<b>Current Residence</b>	<b># of Participants</b>
Glencoe	8	Glencoe	4
Winnetka	2	Winnetka	2
Northfield	1	Northfield	2
Highland Park	2	Highland Park	4
Glenview	1	Glenview	1
Kenilworth	2	Kenilworth	1
Northbrook	3	Northbrook	2
Evanston	2	Evanston	11
Skokie	3	Skokie	4
Wilmette	6	Wilmette	2
Other	6	Other	3

**GYS TEEN CENTER  
2018/19 BUDGET**

	<b>Teen Center</b>	
	<b>2017/18 ACTUAL</b>	<b>2018/19 BUDGET</b>
<b>Revenue</b>		
5100 Grants		
5110 New Trier Township	\$ 35,001	\$ 35,000
5120 Village of Glencoe	\$ 11,000	\$ 12,000
5130 Glencoe Park District	\$ 10,000	\$ 10,000
Total 5100 Grants	\$ 56,001	\$ 57,000
5200 Supporting Organizations - Religious		
5210 St. Elizabeth		\$ 100
5220 Carmel Presbyterian		\$ 100
5230 Glencoe Union Church		\$ 100
5235 Am Shalom		\$ 0
5240 North Shore Methodist	\$ 691	\$ 650
5245 North Congregation Israel		\$ 100
Total 5200 Supporting Organizations - Religious	\$ 691	\$ 1,050
5300 Supporting Organizations - Civic		
5310 Women's Library Club	\$ 1,000	\$ 1,000
5340 Family Services	\$ 100	\$ 100
Total 5300 Supporting Organizations - Civic	\$ 1,100	\$ 1,100
5400 Foundations and Trusts		
5450 Highland Park Bank Foundation	\$ 0	\$ 1,000
WinTrust Bank		\$ 0
Total 5400 Foundations and Trusts	\$ 0	\$ 1,000
5500 Corporate Contributions		
5520 Other	\$ 5	\$ 500
5530 Restaurant Nights Fundraiser	\$ 19	\$ 50
Total 5500 Corporate Contributions	\$ 24	\$ 550
5600 Outreach		
5605 FALL MAILING - PAST DONOR AND CENTRAL SPRING MAILING — ALL VILLAGE	\$ 2,475	\$ 6,500
5610 Past Donor Mailing	\$ 5,007	\$ 0
5630 Annual Appeal		
Total 5600 Outreach	\$ 7,482	\$ 10,500
5800 Fundraising Events		
5810 July 4	\$ 161	\$ 200
5820 Movies on the Green	\$ 47	\$ 0
5830 Harvestfest		\$ 500
5840 Board Fundraiser		
5841 Teen Center Board Fundraiser	\$ 0	
Charitable Games Income	\$ 10,156	\$ 8,000
Spring Fundraiser — WINE TASTING	\$ 4,270	\$ 3,000
Total 5841 Teen Center Board Fundraiser	\$ 14,426	\$ 11,000
5843 Broadway Show Tickets		\$ 5,000
Total 5840 Board Fundraiser	\$ 14,426	\$ 16,000
5850 Participant Fundraiser		
5851 Teen Center Participant Fundraiser		\$ 250
Total 5850 Participant Fundraiser	\$ 0	\$ 250
5860 Other	\$ 50	

leave all net

Fall Fundraiser	\$ 0	
Total 5800 Fundraising Events	\$ 14,684	\$ 16,950
5900 Other Income	\$ 146	\$ 100
5950 Board Dues	\$ 700	\$ 500
Total Revenue	\$ 80,828	\$ 88,750
Gross Profit	\$ 80,828	\$ 88,750
<b>Expenditures</b>		
6000 Payroll Expenditures		
6100 Employee Payroll	\$ 54,658	\$ 60,000
6200 Payroll Taxes	\$ 4,678	\$ 5,000
6300 Payroll Service	\$ 600	\$ 624
6400 Employee Benefits	\$ 2,071	\$ 0
6500 Bookkeeper	\$ 2,720	\$ 3,000
6600 Bonuses	\$ 500	\$ 3,000
6700 Hiring Costs	\$ 58	\$ 100
Total 6000 Payroll Expenditures	\$ 65,285	\$ 71,724
7000 Operating Expenses		
7100 Operations		
7120 Utilities	\$ 4,539	\$ 4,000
7130 Web Expenses	\$ 247	\$ 150
7140 Mailing Expenses	\$ 115	\$ 700
7150 Facilities and Equipment	\$ 96	\$ 100
7160 Office Supplies	\$ 1,524	\$ 500
Total 7100 Operations	\$ 6,522	\$ 5,450
7200 Business Expenses		\$ 88
7210 Registration Fees	\$ 25	\$ 25
7220 Accounting	\$ 500	\$ 500
7230 Marketing	\$ 5,271	\$ 1,500
Total 7200 Business Expenses	\$ 5,796	\$ 2,113
7300 Insurance Expense	\$ 2,606	\$ 2,600
Total 7000 Operating Expenses	\$ 14,924	\$ 10,163
8000 Program Expenses		
8100 Teen Center Program Expenses	\$ 1,945	\$ 3,000
8150 Vending	\$ 313	
Total 8100 Teen Center Program Expenses	\$ 2,257	\$ 3,000
Total 8000 Program Expenses	\$ 2,257	\$ 3,000
9500 Paypal Payment Fees	\$ 118	\$ 150
Bank Service Charges	\$ 143	
Community Outreach	\$ 180	
Spring Fundraiser expenses	\$ 1,951	\$ 0
Training/Continuing Education	\$ 25	\$ 200
BUILDING REPAIR	\$ 0	\$ 4,000
Total Expenditures	\$ 84,884	\$ 89,237
Net Operating Revenue	-\$ 4,056	-\$ 487
Other Revenue		
5910 Interest Earned	\$ 274	\$ 78
Total Other Revenue	\$ 274	\$ 78
Other Expenditures		
Other Miscellaneous Expenditure	\$ 114	
Total Other Expenditures	\$ 114	
Net Other Revenue	\$ 160	\$ 78
<b>Net Revenue</b>	<b>-\$ 3,897</b>	<b>-\$ 409</b>

Sunday, Jul 01, 2018 12:29:32 PM GMT-7 - Cash Basis

# SNAP

## 2018/19 BUDGET

	<b>SNAP</b>	
	<b>2017/18 ACTUAL</b>	<b>2018/19 BUDGET</b>
Revenue		
5100 Grants		
5110 New Trier Township	\$ 9,000	\$ 9,000
5120 Village of Glencoe	\$ 1,000	\$ 1,000
5130 Glencoe Park District	\$ 1,000	\$ 1,000
Total 5100 Grants	\$ 11,000	\$ 11,000
5600 Outreach		
5610 Past Donor Mailing	\$ 875	
5630 Annual Appeal	\$ 1,210	\$ 3,500
Total 5600 Outreach	\$ 2,085	\$ 3,500
5800 Fundraising Events		
5842 YAP Board Fundraiser	\$ 0	
Charitable Games SNAP	\$ 2,503	\$ 2,500
Total 5842 YAP Board Fundraiser	\$ 2,503	\$ 2,500
5843 Broadway Show Tickets		\$ 0
Total 5840 Board Fundraiser	\$ 2,503	\$ 2,500
5850 Participant Fundraiser		
5852 YAP Participant Fundraiser		\$ 1,000
Total 5850 Participant Fundraiser	\$ 0	\$ 1,000
5860 Other		
Fall Fundraiser		
Total 5800 Fundraising Events	\$ 2,503	\$ 3,500
5900 Other Income	\$ 7	\$ 0
5950 Board Dues		
Total Revenue	\$ 15,595	\$ 18,000
Gross Profit	\$ 15,595	\$ 18,000
Expenditures		
6000 Payroll Expenditures		
6100 Employee Payroll	\$ 9,661	\$ 11,000
6200 Payroll Taxes	\$ 837	\$ 900
6300 Payroll Service	\$ 132	\$ 140
6400 Employee Benefits	\$ 119	\$ 0
6500 Bookkeeper	\$ 680	\$ 700
6600 Bonuses	\$ 268	\$ 1,500
6700 Hiring Costs		
Total 6000 Payroll Expenditures	\$ 11,696	\$ 14,240
7000 Operating Expenses		
7100 Operations		
7120 Utilities	\$ 1,850	\$ 1,000

7130 Web Expenses		
7140 Mailing Expenses		
7150 Facilities and Equipment		\$ 90
7160 Office Supplies	\$ 96	\$ 200
Total 7100 Operations	\$ 1,946	\$ 1,290
7200 Business Expenses		
7210 Registration Fees		\$ 50
7220 Accounting		\$ 150
7230 Marketing	\$ 918	\$ 500
Total 7200 Business Expenses	\$ 918	\$ 700
7300 Insurance Expense	\$ 158	\$ 158
Total 7000 Operating Expenses	\$ 3,021	\$ 2,148
8000 Program Expenses		
8200 YAP Program Expenses	\$ 3,634	\$ 3,000
Total 8000 Program Expenses	\$ 3,634	\$ 3,000
9500 Paypal Payment Fees	\$ 3	
Bank Service Charges	\$ 30	
Community Outreach		
Spring Fundraiser expenses		
Training/Continuing Education		
Total Expenditures	\$ 18,385	\$ 19,388
Net Operating Revenue	-\$ 2,790	-\$ 1,388
Other Revenue		
5910 Interest Earned	\$ 41	
Total Other Revenue	\$ 41	
Other Expenditures		
Other Miscellaneous Expenditure		
Total Other Expenditures		
Net Other Revenue	\$ 41	\$ 0
Net Revenue	-\$ 2,749	-\$ 1,388

Sunday, Jul 01, 2018 12:56:07 PM GMT-7 - Cash Basis

**GLENCOE YOUTH SERVICES**

**FINANCIAL STATEMENTS**

**JUNE 30, 2018**

Glencoe Youth Services  
680 Greenwood Avenue  
Glencoe, IL 60022

We have compiled the accompanying balance sheet of the Glencoe Youth Services as of June 30, 2018, and the related statements of Support and revenue, functional expenses and changes in fund balances for the year then ended. We have not audited or reviewed the accompanying financial statements and, accordingly, do not express an opinion or provide any assurance about whether the financial statements are in accordance with accounting principles generally accepted in the United States of America.

Management is responsible for the preparation and fair presentation of the financial statements in accordance with accounting principles generally accepted in the United States of America and for designing, implementing, and maintaining internal controls relevant to the preparation and fair presentation of the financial statements.

Our responsibility is to conduct the compilation in accordance with Statements on Standards for Accounting and Review Services issued by the American Institute of Certified Public Accountants. The objective of a compilation is to assist management in presenting financial information in the form of financial statements without undertaking to obtain or provide any assurance that there are no material modifications that should be made to the financial statements.

**DBS ACCOUNTING SOLUTIONS LLC**

September 6, 2018

GLENCOE YOUTH SERVICES  
STATEMENT OF ASSETS AND FUND BALANCES  
JUNE 30, 2018

<b>ASSETS</b>	<b>AMOUNT</b>
CASH - GYS	\$ 84,924
CASH - YAP	9,254
ACCOUNTS RECEIVABLE	6,753
<b>TOTAL ASSETS</b>	<b><u>\$ 100,931</u></b>

**LIABILITIES AND FUND BALANCE**

ACCOUNTS PAYABLE	\$ 5,326
FUND BALANCE	95,605
<b>TOTAL LIABILITIES AND FUND BALANCE</b>	<b><u>\$ 100,931</u></b>

See Accountant's Compilation Report



GLENCOE YOUTH SERVICES  
 STATEMENT OF SUPPORT AND REVENUE,  
 FUNCTIONAL EXPENSES AND CHANGES IN FUND BALANCES  
 FOR THE YEAR ENDED JUNE 30, 2018

SUPPORT AND REVENUE:	TEEN CENTER	YAP	TOTAL GYS
Support:			
New Trier Township	35,001	9,000	\$ 44,001
Other support organizations	21,791	2,000	23,791
Individual and corporate contributions	8,226	2,085	10,311
Total Support	65,018	13,085	78,103
Revenue:			
Fundraising events	14,853	2,510	17,363
Total support and revenue	79,871	15,595	\$ 95,466
 FUNCTIONAL EXPENSES:			
Salaries	55,216	9,929	65,145
Payroll taxes	4,678	837	5,515
Employee Benefits	2,071	119	2,190
Rent and utilities	4,539	1,850	6,389
Marketing	5,319	918	6,237
Program costs	1,962	3,982	5,944
Fundraising Costs	1,951	-	1,951
Insurance	2,606	158	2,764
Office supplies	1,677	96	1,773
Accounting	3,220	680	3,900
Miscellaneous	1,856	102	1,958
Total functional expenses	85,095	18,671	103,766
SURPLUS (DEFICIT)	(5,224)	(3,076)	(8,300)
FUND BALANCE - Beginning of year			103,905
FUND BALANCE - End of year			\$ 95,605

See Accountant's Compilation Report

## **IV. GJHP Stipend Request**

Glencoe Park District  
February 5, 2019  
Committee of the Whole Meeting

# Glencoe Park District Funding Request

## Glencoe Junior High Project

January 10, 2019

Contact: Melissa Di Giacomo, Program Director

Address: 620 Greenwood Ave., Glencoe, IL 60022

Email: [melissa@gjhp.org](mailto:melissa@gjhp.org)

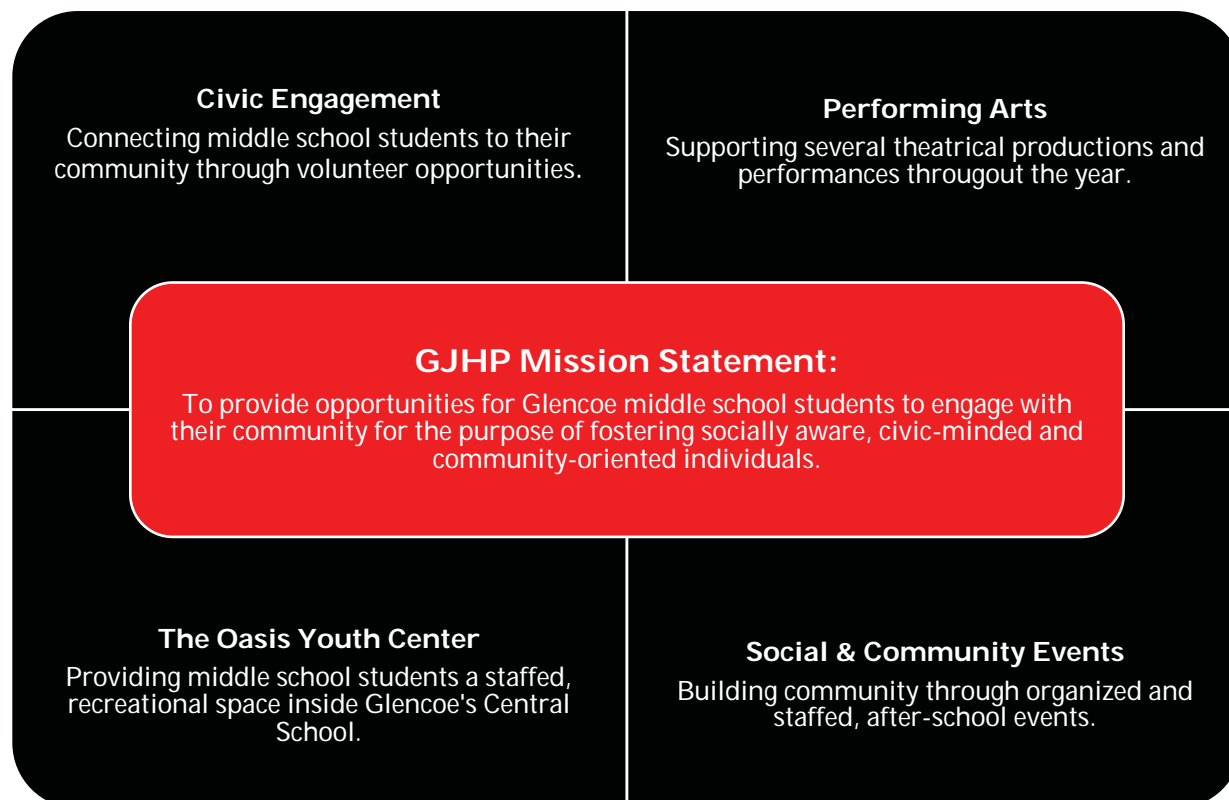
Phone: (847) 835-7623

### AMOUNT REQUESTED: \$10,000

Glencoe Junior High Project provides opportunities for Glencoe middle school students to engage with the community for the purpose of fostering socially aware, civic-minded, and community-oriented individuals.

Operating for over 47 years, the Glencoe Junior High Project was developed by various community organizations to address concerns over local vandalism. To address the concern, they sought to create programs to help students feel more accepted and engaged in the community. The GJHP did this through the formation of an umbrella organization that coordinated four separate, yet jointly-governed programs, one of which was GJHP's predecessor, the "Junior High Club."

Today, the Glencoe Junior High Project consists of four separate, but jointly governed programs including Civic Engagement Events, Social & Community Activities, Performing Arts, and the Oasis youth center, as highlighted in the graphic of the GJHP Mission Statement below.



**How funds were used this past year:**

We are so grateful for the funds we received from the Glencoe Park District last year. These funds were applied towards employing two full-time program directors. Our organization's program directors are a critical component of our programming, as they actively work to implement the civic engagement trips and social activities/events we offer to students after school, as well as supervise and lead events in the Oasis, and help complete the paperwork necessary for fundraising and our performing arts initiative during school hours.

**How funds will be used if approved:**

We respectfully continue to request funding to maintain our employment of two, full-time program directors. Without their talents and abilities to provide our organization the skills necessary to run our wide range of programming, the GJHP could never fulfill our vision to provide all Glencoe middle school students the opportunities to connect with their peers, their community, and their world.

The following is a complete list of the Glencoe Junior High programming across the areas of Civic Engagement, Social and Community Events, and the Performing Arts.

# Glencoe Junior High Project's 2018-2019

## Social & Community Events

*Building community through organized, staffed, after-school events*



### **Backyard BBQ (9.7.2018)**

Every August the GJHP kicks off the school year with the annual Backyard BBQ. Located behind Central School all 5th - 8th grade students and their families are welcome to come to play games, listen to music, and enjoy a BBQ dinner while meeting new friends and reacquainting with old.

### **Mud Run (9.15.2018)**

Inspired by the Tough Mudder, the Glencoe Park District's Second Annual Mud Run is a GJHP supported event, designed for kids to test their physical stamina by running, jumping, climbing and crawling through 12, mud-filled, obstacles. Co-sponsored by the GJHP and GPD.

### **Girls Night Out with, *Bond... Jamie Bond* (Date TBD)**

Middle school mothers and daughter unite for an evening at Krav Maga Illinois, where they learn physical defense techniques and safety strategies that will leave them shaken... but not stirred!

### **Halloween Hoopla (10. 26.2018)**

In late October, all 5th - 8th grade students are invited to head back to Central School for a Friday night costume party featuring a professional D.J., photo booth, costume contest, snacks and treats.

### **Teen Skate Night (12.14.2018 & 2.8.2019)**

Central School students are invited to lace up their skates and head over to the Watts Ice Center for a fun night of skating, s'mores, hot cocoa, games and activities for this GJHP/ GPD co-sponsored event.

### **6<sup>th</sup> Grade Social (3.3.2019)**

Every spring, the GJHP sponsors the 6<sup>th</sup> grade social, an opportunity for all sixth-grade students to connect with friends and socialize, while listening and learning from a professional DJ on appropriate behavior in a formal social setting in preparation for the upcoming seventh grade, bar and bat mitzvah year.

### **Beach Bash (6.12.2019)**

On the last day of school, the GJHP invites all 5<sup>th</sup> – 8<sup>th</sup> grade students to celebrate the beginning of summer with the annual Beach Bash. Located at the Glencoe Beach, all middle school students are welcome to celebrate the end of the school year with beach games, contests, sand volleyball, BBQ and much more!

### **After School Events**

GJHP sponsors various after school activities held throughout the year including, but not limited to ping pong tournaments, bake days, movie days, girls-only and boys-only events for Central school students.

---

# GJHP Civic Engagement Program

*Connecting middle school students to their community today,  
for the purpose of fostering socially aware, empowered, leaders of tomorrow.*

The GJHP Civic Engagement Program address the following three issues:



## GJHP Civic Engagement Activities 2018-2019

- **Uptown Café**  
Once a month, the GJHP offers Glencoe's 6- 8<sup>th</sup> grade students the opportunity to serve the patrons a sit-down meal at the Uptown Café. Located on the North side of Chicago, the Uptown Café is a restaurant-style, non-profit, meal program that works to address hunger in the city of Chicago in a humane and respectful way.
- **A Just Harvest**  
Once a month, the GJHP offers Glencoe's 6-8<sup>th</sup> grade students the opportunity to serve patrons at A Just Harvest, a soup kitchen located in the Rogers Park community. GJHP students are invited to assist with setup, clean up and serving meals to individuals affected by food insecurity.
- **New Trier Township Food Pantry**  
Throughout the school year, GJHP students collaborate with the New Trier Township to collect items for the NTT Food Pantry. Organizing collections across the district, GJHP students are given the opportunity to collect and deliver items directly to the pantry, where they are given a tour at the facility as well as a short briefing of the work NTTFP offers to the community.

- **Glencoe Community Garden**

During the growing season, GJHP students are given the opportunity to volunteer at the Glencoe Community Garden, a village-supported growing center that produces sustainable, organic food that serves local food kitchens, pantries and other charitable organizations.

- **Cradles to Crayons**

Each year, GJHP students collaborate with the PTO and District 35 to organize district-wide collections to deliver to Cradles to Crayons. Twice a year, students are given the opportunity to volunteer in the Cradles to Crayons warehouse to deliver, select and assemble essential items for children in need throughout the school year.

- **Project Linus**

Once a year, GJHP students are given the opportunity to create hand-tied, fleece blankets in collaboration with Project Linus, a non-profit organization dedicated to providing blankets to children in need and distributed across the greater Chicagoland area.

- **Bernie's Book Bank**

Once a month, GJHP students are invited to donate and collect new or gently-used books across the district to Bernie's Book Bank, a non-profit organization that distributes books to children in need.

- **Working with Seniors**

Once a month, GJHP students have the opportunity to engage with residents at a senior home through organized activities including art projects, board games, bingo tournaments and music.

- **Book Buddies**

Twice a week, the GJHP offers all Central School students the opportunity to mentor a younger child (grades K-2) in the district, to work on reading, comprehension and leadership skills at the Glencoe Public Library.

- **Legacy Project**

The Legacy Project is designed to connect middle school students with Glencoe senior citizens for the purposes of generating intergenerational learning, empathy and understanding.



**Glencoe Junior High Project  
2018-2019 Budget**

<b>Income</b>		
Donations		
General Donations	15,000	
Park District Stipend	<u>10,000</u>	
<b>Total General Donations</b>		25,000
Grants		
Village of Glencoe Grant	10,000	
New Trier Township Grant	<u>20,000</u>	
<b>Total Grant Income</b>		30,000
Play Income		
Play Participation Fees	24,300	
Playbook	30,000	
Ticket Sales	16,000	
Concession Sales	2,200	
Gifts & Souvenir Sales	<u>3,700</u>	
<b>Total Play Income</b>		76,200
Theatre Workshops		
<b>Total Theatre Workshop Income</b>		14,000
Civic Engagement Income		
<b>Total Civic Engagement Income</b>		3,000
Social Activities Income		
<b>Total Social Activities Income</b>		9,200
Other Income		
<b>Total Other Income</b>		<u>7,000</u>
<b>Total Income</b>		<u>164,400</u>
 <b>Gross Profit</b>		 164,400

**Glencoe Junior High Project  
2018-2019 Budget**

<b>Expenses</b>		
Administrative Expenses		
<b>Total Administrative Expenses</b>		24,500
Employee Expenses		
<b>Total Employee Expenses</b>		60,500
Play Expenses		
Professional Staff Fees	29,600	
Production Fees	22,700	
Concession Expense	1,000	
Merchandise Sales Expense	<u>1,000</u>	
<b>Total Play Expenses</b>		54,300
Theatre Workshop Expense		
<b>Total Theatre Workshop Expense</b>		10,700
Civic Engagement Expense		
<b>Civic Engagement Expense</b>		2,600
Social Service Expense		
<b>Total Social Service Expense</b>		7,900
Teacher's Luncheon		
<b>Total Teacher's Luncheon Expense</b>		1,100
Miscellaneous Expense		
<b>Total Miscellaneous Expense</b>		<u>100</u>
<b>Total Expenses</b>		<u>161,700</u>
<b>Net Operating Income</b>		<u>2,700</u>
<b>Net Income</b>		<u><u>2,700</u></u>

Cheryl Rohlf & Associates, Ltd.

*Certified Public Accountants*

**GLENCOE JUNIOR HIGH PROJECT**

**FINANCIAL STATEMENTS**

**FOR THE FISCAL YEARS ENDED  
JUNE 30, 2017 AND 2016**

**CONTENTS**

	<b>Page</b>
Independent Auditor's Report	1-2
Statements of Financial Position	3
Statements of Activities	4
Statements of Functional Expenses	5-6
Statements of Cash Flow	7
Notes to Financial Statements	8-10



Cheryl Rohlf & Associates, Ltd.

*Certified Public Accountants*

## INDEPENDENT AUDITOR'S REPORT

January 30, 2018

To the Board of Directors of  
Glencoe Junior High Project

We have audited the accompanying financial statements of Glencoe Junior High Project (an Illinois nonprofit organization), which comprise the statement of financial position as of June 30, 2017 and 2016, and the related statements of activities, functional expenses and cash flows for the fiscal years then ended, and the related notes to the financial statements.

### **Management's Responsibility for the Financial Statements**

Management is responsible for the preparation and fair presentation of these financial statements in accordance with accounting principles generally accepted in the United States of America; this includes the design, implementation, and maintenance of internal control relevant to the preparation and fair presentation of financial statements that are free from material misstatement, whether due to fraud or error.

### **Auditor's Responsibility**

Our responsibility is to express an opinion on these financial statements based on our audits. We conducted our audits in accordance with auditing standards generally accepted in the United States of America. Those standards require that we plan and perform the audit to obtain reasonable assurance about whether the financial statements are free from material misstatement.

An audit involves performing procedures to obtain audit evidence about the amounts and disclosures in the financial statements. The procedures selected depend on the auditor's judgment, including the assessment of the risks of material misstatement of the financial statements, whether due to fraud or error. In making those risk assessments, the auditor considers internal control relevant to the entity's preparation and fair presentation of the financial statements in order to design audit procedures that are appropriate in the circumstances, but not for the purpose of expressing an opinion on the effectiveness of the entity's internal control. Accordingly, we express no such opinion. An

audit also includes evaluating the appropriateness of accounting policies used and the reasonableness of significant accounting estimates made by management, as well as evaluating the overall presentation of the financial statements.

We believe that the audit evidence we have obtained is sufficient and appropriate to provide a basis for our audit opinion.

**Opinion**

In our opinion, the financial statements referred to above present fairly, in all material respects, the financial position of Glencoe Junior High Project as of June 30, 2017 and 2016, and the changes in its net assets and its cash flows and for the fiscal years then ended in accordance with accounting principles generally accepted in the United States of America.

*Cheryl Rohlfs & Associates, Ltd.*

**CHERYL ROHLFS & ASSOCIATES, LTD.**  
Northbrook, Illinois



**GLENCOE JUNIOR HIGH PROJECT  
STATEMENTS OF FINANCIAL POSITION  
JUNE 30, 2017 AND 2016**

	<u>2017</u>	<u>2016</u>
<b>ASSETS</b>		
Cash	\$ 82,319	\$ 84,827
Investments	143,741	138,358
Unconditional Promises to Give	20,833	19,333
Accounts Receivable	-	1,164
Prepaid Expenses	1,534	1,651
Property and Equipment:		
Equipment and Furniture	1,820	340
Less: Accumulated Depreciation	<u>(414)</u>	<u>(340)</u>
Total Property and Equipment	<u>1,406</u>	<u>-</u>
<b>Total Assets</b>	<b><u>\$ 249,833</u></b>	<b><u>\$ 245,333</u></b>
<b>LIABILITIES</b>		
Accounts Payable	<u>\$ 536</u>	<u>\$ 2,757</u>
<b>Total Liabilities</b>	<u>536</u>	<u>2,757</u>
Net Assets		
Unrestricted	228,464	213,576
Temporarily Restricted	<u>20,833</u>	<u>29,000</u>
<b>Total Net Assets</b>	<u>249,297</u>	<u>242,576</u>
<b>Total Liabilities and Net Assets</b>	<b><u>\$ 249,833</u></b>	<b><u>\$ 245,333</u></b>

See accompanying notes and independent auditor's report.

**GLENCOE JUNIOR HIGH PROJECT  
STATEMENTS OF ACTIVITIES  
FOR THE FISCAL YEARS ENDED JUNE 30, 2017 AND 2016**

	<u>2017</u>	<u>2016</u>
<b>UNRESTRICTED NET ASSETS</b>		
<b>Unrestricted Revenues and Gains</b>		
Contributions	\$ 20,666	\$ 14,982
Government Grants	10,000	12,000
Play Participation Fees	27,268	24,957
Playbook Ads and Tributes	26,546	32,250
Play Ticket Sales	20,867	21,400
Theatre Workshops Revenues	13,375	15,229
Social Activities and Civic Program Revenues	20,911	19,347
Merchandise Sales	4,566	4,448
Investment Income	5,466	4,613
Miscellaneous	<u>4,604</u>	<u>3,006</u>
<b>Total Unrestricted Revenues and Gains</b>	154,269	152,232
Net Assets Released from Restrictions	<u>9,168</u>	<u>29,000</u>
<b>Total Unrestricted Revenues, Gains, and Other Support</b>	<u>\$ 163,437</u>	<u>\$ 181,232</u>
<b>Expenses:</b>		
<b>Program Services</b>	\$ 159,260	\$ 152,040
<b>Supporting Services:</b>		
Management and General	17,383	22,875
Fundraising	<u>906</u>	<u>616</u>
<b>Total Expenses</b>	<u>\$ 177,549</u>	<u>\$ 175,531</u>
<b>INCREASE (DECREASE) IN UNRESTRICTED NET ASSETS</b>	<u>\$ (14,112)</u>	<u>\$ 5,701</u>
<b>TEMPORARILY RESTRICTED NET ASSETS</b>		
Restricted Government Grants	\$ 30,001	\$ 29,000
Net Assets Released from Restrictions	<u>(9,168)</u>	<u>(29,000)</u>
<b>INCREASE IN TEMPORARILY RESTRICTED NET ASSETS</b>	<u>\$ 20,833</u>	<u>\$ -</u>
<b>CHANGE IN NET ASSETS</b>	<u>\$ 6,721</u>	<u>\$ 5,701</u>
<b>NET ASSETS, BEGINNING OF YEAR</b>	\$ 242,576	\$ 236,875
<b>INCREASE IN NET ASSETS</b>	<u>6,721</u>	<u>5,701</u>
<b>NET ASSETS, END OF YEAR</b>	<u>\$ 249,297</u>	<u>\$ 242,576</u>

See accompanying notes and independent auditor's report.



**GLENCOE JUNIOR HIGH PROJECT  
STATEMENTS OF FUNCTIONAL EXPENSES  
FOR THE FISCAL YEARS ENDED JUNE 30, 2017 AND 2016**

	Program	Management and General	Fundraising	2017 Total
<b>Compensation and Related Expenses:</b>				
Compensation	\$ 60,979	\$ -	\$ -	\$ 60,979
Employee Benefits	5,178	-	-	5,178
Payroll Taxes	3,403	-	-	3,403
	<u>\$ 69,560</u>	<u>\$ -</u>	<u>\$ -</u>	<u>\$ 69,560</u>
Play Expenses	21,880	-	-	21,880
Theatre Workshops Expenses	11,557	-	-	11,557
Social Activities and Civic Program Expenses	17,630	-	-	17,630
Professional Fees and Contract Services	28,547	3,801	-	32,348
Supplies	782	-	-	782
Special Projects Expenses	1,261	-	-	1,261
Postage and Printing	375	-	-	375
Marketing and Community Outreach	4,058	-	-	4,058
Insurance	-	11,565	-	11,565
Technology and Website	-	169	-	169
Facilities Fees	536	-	-	536
Contributed Facilities	3,000	-	-	3,000
Fundraising Expenses	-	-	906	906
Bank and Credit Card Fees	-	1,774	-	1,774
Miscellaneous	-	74	-	74
Total Expenses Before Depreciation	<u>\$ 159,186</u>	<u>\$ 17,383</u>	<u>\$ 906</u>	<u>\$ 177,475</u>
Depreciation	74	-	-	74
<b>TOTAL EXPENSES</b>	<u><u>\$ 159,260</u></u>	<u><u>\$ 17,383</u></u>	<u><u>\$ 906</u></u>	<u><u>\$ 177,549</u></u>

See accompanying notes and independent auditor's report.

**GLENCOE JUNIOR HIGH PROJECT**  
**STATEMENTS OF FUNCTIONAL EXPENSES**  
**FOR THE FISCAL YEARS ENDED JUNE 30, 2017 AND 2016 (CONTINUED)**

	Program	Management and General	Fundraising	2016 Total
<b>Compensation and Related Expenses:</b>				
Compensation	\$ 64,500	\$ -	\$ -	\$ 64,500
Employee Benefits	3,512	-	-	3,512
Payroll Taxes	3,442	-	-	3,442
	<u>\$ 71,454</u>	<u>\$ -</u>	<u>\$ -</u>	<u>\$ 71,454</u>
Play Expenses	19,333	-	-	19,333
Theatre Workshops Expenses	13,031	-	-	13,031
Social Activities and Civic Program Expenses	17,048	-	-	17,048
Professional Fees and Contract Services	25,806	1,165	-	26,971
Supplies	1,609	-	-	1,609
Special Projects Expenses	1,491	-	-	1,491
Postage and Printing	590	-	-	590
Advertising and Marketing	1,082	-	-	1,082
Insurance	-	10,026	-	10,026
Technology and Website	-	3,184	-	3,184
Facilities Fees	428	-	-	428
Fundraising Expenses	-	-	616	616
Bank and Credit Card Fees	-	2,024	-	2,024
Loss on Disposal of Equipment	-	5,527	-	5,527
Miscellaneous	166	949	-	1,115
Total Expenses Before Depreciation	<u>\$ 152,038</u>	<u>\$ 22,875</u>	<u>\$ 616</u>	<u>\$ 175,529</u>
Depreciation	2	-	-	2
<b>TOTAL EXPENSES</b>	<u><u>\$ 152,040</u></u>	<u><u>\$ 22,875</u></u>	<u><u>\$ 616</u></u>	<u><u>\$ 175,531</u></u>

See accompanying notes and independent auditor's report.

**GLENCOE JUNIOR HIGH PROJECT  
STATEMENTS OF CASH FLOWS  
FOR THE FISCAL YEARS ENDED JUNE 30, 2017 AND 2016**

	<u>2017</u>	<u>2016</u>
<b>CASH FLOWS FROM OPERATING ACTIVITIES:</b>		
Increase in Net Assets	\$ 6,721	\$ 5,701
Adjustments to Reconcile Change in Net Assets to Net Cash Provided by Operating Activities:		
Loss on Disposal of Equipment	-	5,527
Unrealized Gain on Investments	-	(2,827)
Depreciation	74	2
(Increase) Decrease in Operating Assets:		
Unconditional Promises to Give	(1,500)	9,667
Accounts Receivable	1,164	(1,164)
Prepaid Expenses	117	6,304
Increase (Decrease) in Operating Liabilities:		
Accounts Payable	<u>(2,221)</u>	<u>856</u>
NET CASH PROVIDED BY OPERATING ACTIVITIES	<u>\$ 4,355</u>	<u>\$ 24,066</u>
<b>CASH FLOWS FROM INVESTING ACTIVITIES:</b>		
Increase in Investments	\$ (5,383)	\$ (2,449)
Purchases of Equipment	<u>(1,480)</u>	<u>-</u>
NET CASH USED IN INVESTING ACTIVITIES	<u>\$ (6,863)</u>	<u>\$ (2,449)</u>
<b>CASH FLOWS FROM FINANCING ACTIVITIES:</b>	<u>\$ -</u>	<u>\$ -</u>
<b>NET INCREASE (DECREASE) IN CASH AND CASH EQUIVALENTS</b>	<b>\$ (2,508)</b>	<b>\$ 21,617</b>
<b>CASH AND CASH EQUIVALENTS, BEGINNING OF YEAR</b>	<u>84,827</u>	<u>63,210</u>
<b>CASH AND CASH EQUIVALENTS, END OF YEAR</b>	<u><u>\$ 82,319</u></u>	<u><u>\$ 84,827</u></u>

See accompanying notes and independent auditor's report.



**GLENCOE JUNIOR HIGH PROJECT**  
**NOTES TO THE FINANCIAL STATEMENTS**  
**JUNE 30, 2017 AND 2016**

**1. DESCRIPTION OF THE ORGANIZATION**

**Nature of Activities**

Glencoe Junior High Project (GJHP) is a 501(c)(3) Illinois non-profit organization that provides opportunities for Glencoe, Illinois middle school students to engage with the community for the purpose of fostering socially aware, civic-minded and community-oriented individuals. GJHP offers various programs and activities, including the Oasis Youth Center which serves as a meeting place for students, grades 5th-8th, to drop in during their lunch-recess period. In addition, GJHP's Civic Engagement Program offers Glencoe middle school students the opportunity to engage with local community members and their organizations for the purposes of building social awareness and civic mindedness. Glencoe Junior High Project plans and sponsors a variety of social events for Glencoe middle school students and their families including dances, parties and events to promote community and civic engagement. Also, GJHP's Performing Arts Program supports several theatrical productions a year for the purposes of building community through the arts.

Glencoe Junior High Project is run by a volunteer board and two full-time Youth Directors. GJHP's programs and staff are funded by community donations, government grants, program fees and net revenues generated by the theatrical productions.

**2. SIGNIFICANT ACCOUNTING POLICIES**

**Basis of Accounting**

The financial statements of Glencoe Junior High Project have been prepared on the accrual basis of accounting and accordingly reflect all significant receivables, payables, and other liabilities.

**Basis of Presentation**

Glencoe Junior High Project is required to report information regarding its financial position and activities according to three classes of net assets: unrestricted net assets, temporarily restricted net assets, and permanently restricted net assets. GJHP did not have permanently restricted net assets as of June 30, 2017 and 2016.

**Cash and Cash Equivalents**

Glencoe Junior High Project considers all unrestricted highly liquid investments with an initial maturity of three months or less to be cash equivalents.

**Investments**

Investments in mutual funds with readily determinable fair values are stated at fair value.

### **Promises to Give**

Unconditional promises to give are recognized as revenues in the period received and as assets, decreases of liabilities, or expenses depending on the form of the benefits received. Conditional promises to give are recognized only when the conditions on which they depend are substantially met and the promises become unconditional.

### **Estimates**

Management uses estimates and assumptions in preparing financial statements. Those estimates and assumptions affect the reported amounts of assets and liabilities, the disclosure of contingent assets and liabilities, and the reported revenues and expenses. Actual results could differ from those estimates.

### **Property and Equipment**

It is GJHP's policy to capitalize property and equipment more than \$500. Lesser amounts are expensed. Purchased property and equipment are capitalized at cost. Donations for property and equipment are recorded as support at their estimated fair value. Such donations are reported as unrestricted support unless the donor has restricted the donated asset to a specific purpose. Assets donated with explicit restrictions regarding their use and contributions of cash that must be used to acquire property and equipment are reported as restricted support. Property and equipment are depreciated using the straight-line method over the useful lives, with a five year life for equipment. Depreciation expense for the fiscal years ended June 30, 2017 and 2016 was \$74 and \$2, respectively.

### **Income Taxes**

Glencoe Junior High Project is a not-for-profit organization that is exempt from income taxes under Section 501(c)(3) of the Internal Revenue Code. However, income from certain activities not directly related to GJHP's tax exempt purpose is subject to taxation as unrelated business income. In addition, GJHP qualifies for the charitable contribution deduction under Section 170(b)(1)(A) and has been classified as an organization other than a private foundation under Section 509(a)(2).

### **Expense Allocation**

The costs of providing program and supporting services have been summarized on a functional basis in the Statement of Activities and in the Statement of Functional Expenses. Accordingly, costs have been allocated between the program services and the supporting services in a direct functional method, when applicable, and on the basis of proportional use of the service provided.

### **Donated Services**

Donated services are recognized as contributions if the services (a) create or enhance nonfinancial assets or (b) require specialized skills, are performed by people with those skills, and would otherwise be purchased by Glencoe Junior High Project. Volunteers provided services throughout the fiscal year that are not recognized as contributions in the financial statements since the recognition criteria were not met.



### 3. FAIR VALUE MEASUREMENTS

Fair values of assets measured on a recurring basis as of June 30, 2017 are as follows:

	<u>Fair Value</u>	<u>Quoted Prices in Active Markets for Identical Assets (Level 1)</u>
Mutual Funds	\$ <u>143,741</u>	\$ <u>143,741</u>

Fair values of assets measured on a recurring basis as of June 30, 2016 are as follows:

	<u>Fair Value</u>	<u>Quoted Prices in Active Markets for Identical Assets (Level 1)</u>
Mutual Funds	\$ <u>138,358</u>	\$ <u>138,358</u>

### 4. CONCENTRATION OF CREDIT RISK

Glencoe Junior High Project maintains its cash at two financial institutions. Accounts at each institution are fully insured by the Federal Deposit Insurance Corporation (FDIC) up to \$250,000 per institution. As of June 30, 2017 and 2016, the Organization did not exceed the insured amounts.

### 5. TEMPORARILY RESTRICTED NET ASSETS

As of June 31, 2017, Glencoe Junior High Project had temporarily restricted net assets of \$20,833, relating to government grant funds available to be spent in the fiscal year ended June 31, 2018. As of June 30, 2016, GJHP had \$29,000 of temporarily restricted net assets, also relating to government grant funds available for the fiscal year 2017.

### 6. EVALUATION OF SUBSEQUENT EVENTS

Glencoe Junior High Project has evaluated subsequent events through January 30, 2018, the date which the financial statements were available to be issued.

## **V. FY2019/20 Budget – First Draft Review**

**Refer to the Budget – First Draft delivered to  
Commissioners homes on 1/21/2019**

Glencoe Park District  
February 5, 2019  
Committee of the Whole Meeting

## **VI. Discussion on Old Green Bay Trail Project**

Glencoe Park District  
February 5, 2019  
Committee of the Whole Meeting





---

---

## INTEROFFICE MEMORANDUM

---

---

**TO:** Board of Commissioners  
**FROM:** Lisa Sheppard, Executive Director  
**SUBJECT:** Fund 69  
**DATE:** January 21, 2019  
**CC:**

---

In December, the Board approved Fund 69 Capital Projects for the 2019/20 fiscal year.

While design fees for the Old Green Bay linear park project were included in the budget, it was also agreed upon that more discussion was needed by the committee on what design elements were to be included in the Detail Designs for Old Green Bay linear parks so that direction can be given to our landscape architects and a contract drawn up for the design work.

Included in the packet are the original “conceptual designs” for the proposed project.



# Old Green Bay Road Linear Parks Master Plan

September 11th, 2018





Delighted to be Here!!!

# Tonight

---

Proposal for a Recreational Multi-Use Trail through the Parks along Old Green Bay Road

Accommodate Variety of Users, All Ages & Abilities

Act as a Spine for Aesthetic and Park Experiences

Promote Exercise and the Health of the Community



# But First the Opening of Jefferson Vernon Playground

---



Before





Opening Day August 29<sup>th</sup> 2018









Shows the Need for Recreation  
and  
Community Gathering Spaces





People who Helped Make it Happen : Board and Staff





People who Helped Make it Happen : Board and Staff









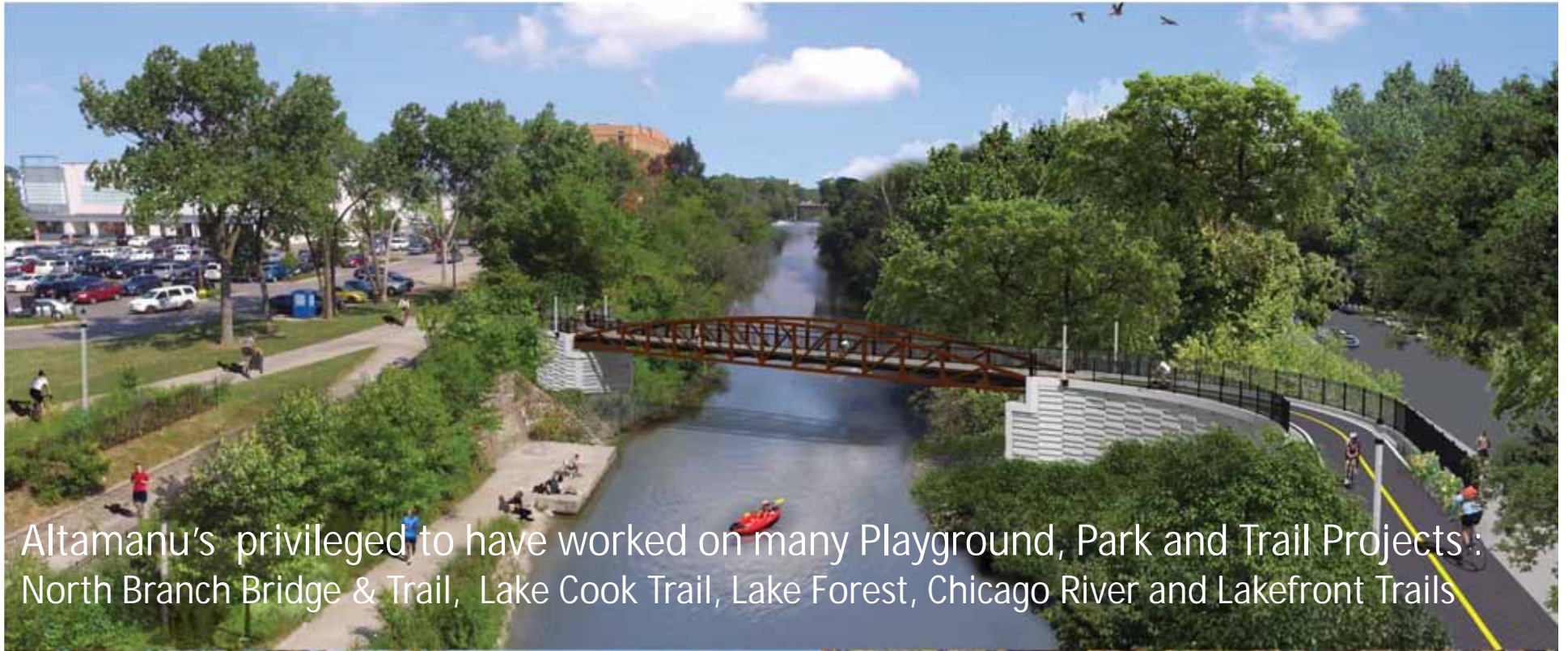
People who Helped Make it Happen : Board and Staff





Please Remember this Image of Children Enjoying Exercising!!



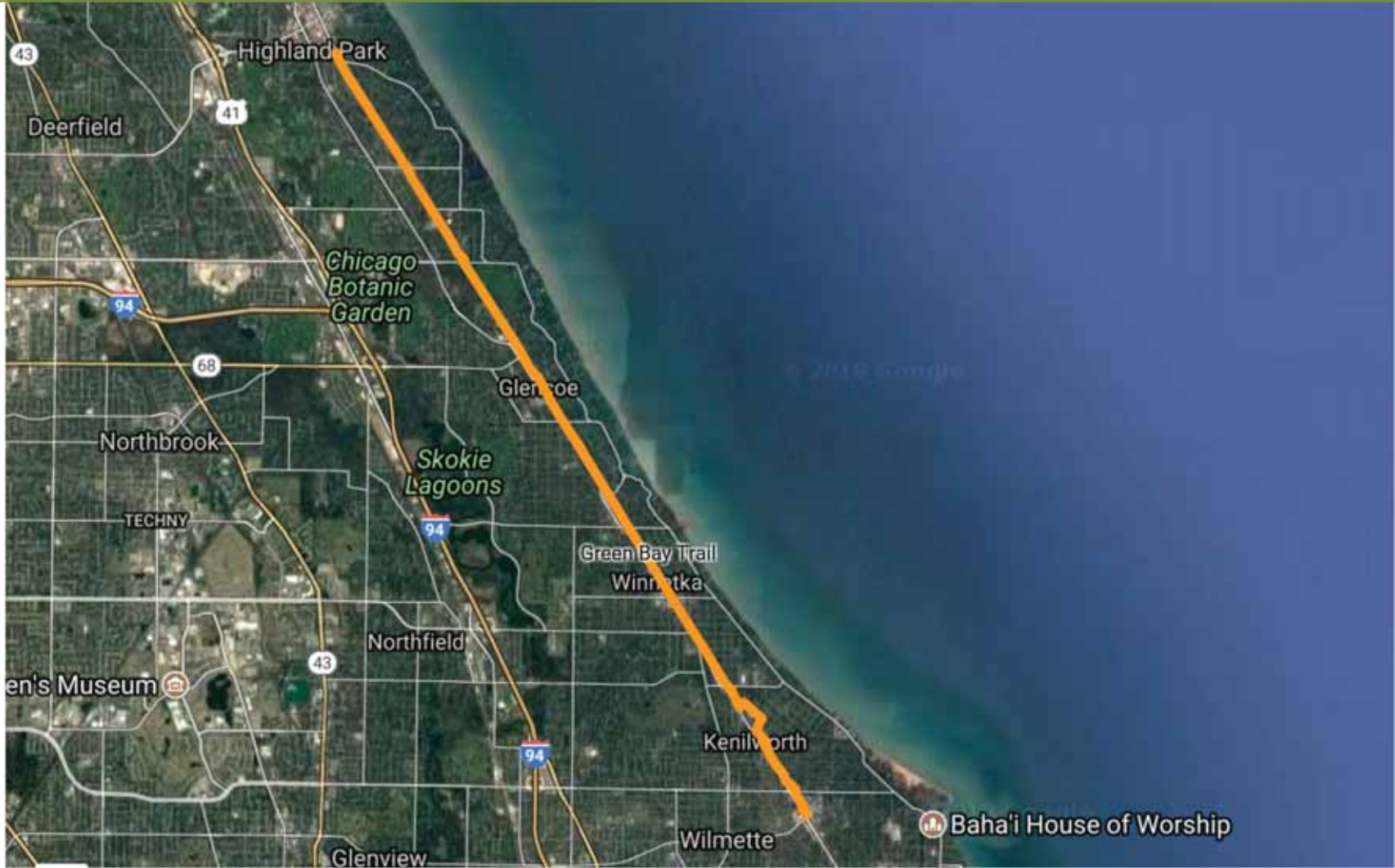


Altamanu's privileged to have worked on many Playground, Park and Trail Projects :  
North Branch Bridge & Trail, Lake Cook Trail, Lake Forest, Chicago River and Lakefront Trails





# Tonight: The Green Bay Trail in Downtown Glencoe



Part of Ever-Growing Network

Altamanu  Inc.  
landscape architecture + urban design + planning

  
SHP GROUP

  
GLENCOE  
PARK DISTRICT

## 2016 Regional Greenways and Trails Plan



CMAP 2016 Proposed Greenways and Trails Plan

### Trail Status

- Existing Trails
- Planned and Future Trails
- Programmed Trails

- Metra Lines
- Metra Stations
- Parks and Open Space
- Water Bodies



Part of Ever-Growing Network

Altamanu Inc.  
landscape architecture + urban design + planning





# Cycling: Rising Trend Nationally

Large Increase of Cyclists between 2012 and 2016

By 2016 : 66.5 million cyclists

Young adults –18 to 24 – Increasing Dramatically

However

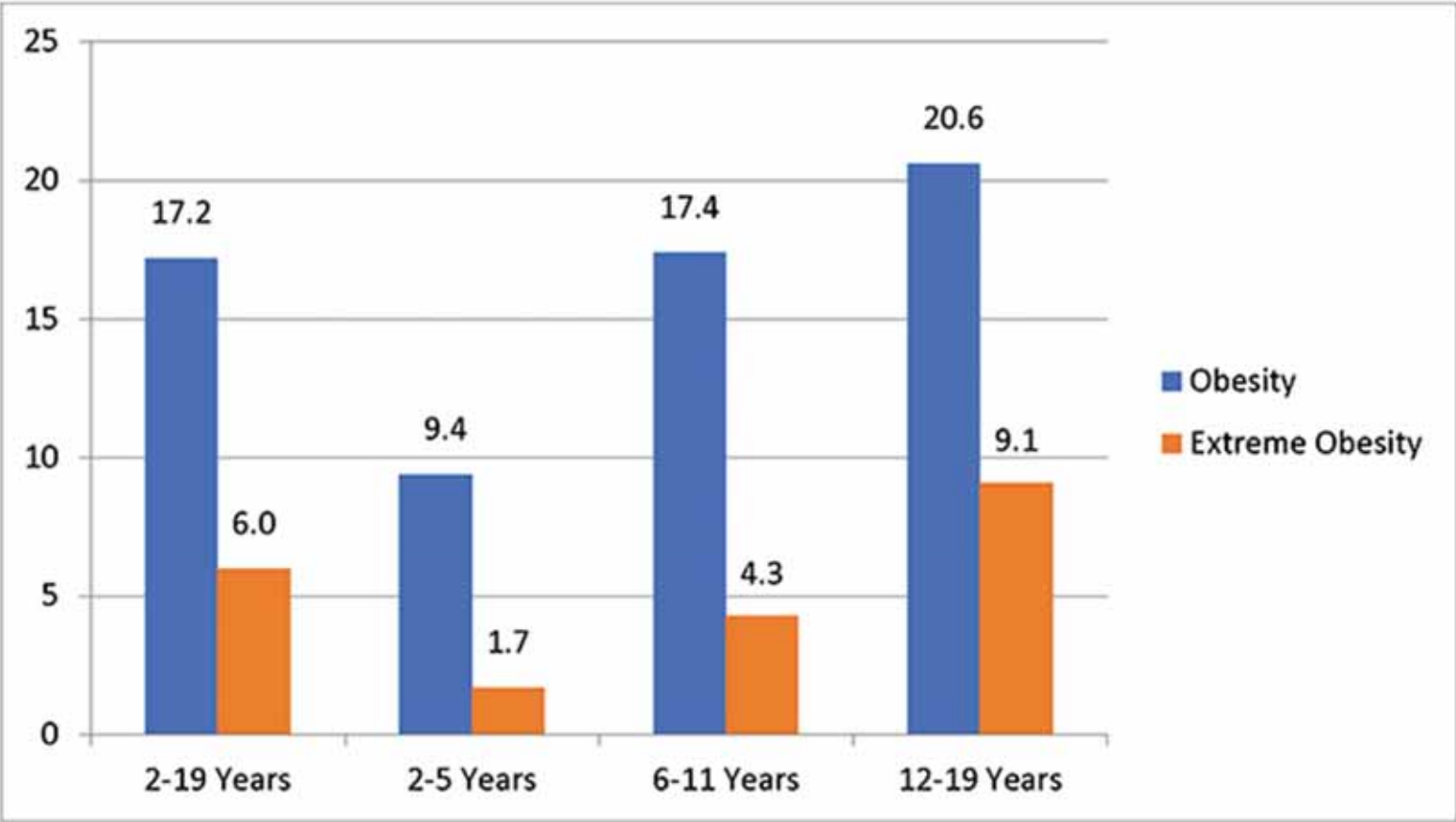
Young cyclists in the U.S. Declining

*Statista*

# Correlation to Rising Health Issues 2013 - 2014

## Children and Adolescents (Youth)

Estimated Percentage of US Youth with Obesity\*, Ages 2–19, 2013–2014 NHANES Data



\* obesity includes extreme obesity



# Meanwhile Active Adults : Fastest Growing Segment Nationwide



“Thoughtful Neighborhood and Park Design  
Encourages Active Aging.” *US NATIONAL LIBRARY OF MEDICAL RESEARCH*

“Paths & Trails Most Popular Facilities in Surveys”

*NATIONAL PARK AND RECREATION ASSOCIATION*

Altamanu  Inc.  
landscape architecture + urban design + planning



# Need ADA Compliant Paths



“Shouldn't there be some access so we can experience the trees?”

*Resident of Glencoe*



# And Not Surprisingly Another National Trend Call for Intergenerational Recreation!!!!

FRIENDSHIP SWING



OUTDOOR CARDIO WALKER



SPINNER



“Children can see older adults in non-stereotypic activity and begin to understand that exercise is a lifelong pursuit”

# Correlation to Rising Health Issues

---

Therefore

Children & Adolescents Drastic increase in Obesity/Diabetes  
Epidemic according to AMA

Decrease in Exercise in that Age Group

Seniors (Active Adults) Fastest Growing Segment (not a pun)

Paths and Trails most Popular and

Call for Intergenerational Recreation

# What Does this Mean for the Park District

---

Children & Adolescents Drastic increase in Obesity/Diabetes  
**GET THEM EXERCISING**

Decrease in Exercise in that Age Group  
**PAY ATTENTION TO THE YOUNG**

Seniors (Active Adults) Fastest Growing Segment  
**AND PROVIDE ACTIVITIES FOR ACTIVE ADULTS**

Paths and Trails most Popular and Intergenerational Rec.  
**PROVIDE PEOPLE ARE LOOKING FOR PATHS AND TRAILS**

# Back to The Green Bay Trail : From On Trail Link

---

## Green Bay Trail Facts

Trail end points:

St. Johns Ave. at Sheridan Rd. (Highland Park) and Greenleaf Ave. (Wilmette)

Trail surfaces: Asphalt, Concrete, Crushed Stone

Trail category: Rail-Trail

Trail activities:

Biking, Skating, Walking, Jogging, Cross-Country Skiing, Wheelchair Accessible

ACCESSIBLE?

Not Particularly in Glencoe!!!





Part of the Trail is through Parks, on Separate Paths  
However long Segments are on Busy Roadways

# And Next Year is the Sesquicentennial

“Glencoe officials are seeking suggestions from residents on what they would like to see in terms of a “legacy gift” as part of the next year’s planned celebration of the village’s 150th anniversary of its incorporation.

The goal is to have some long-lasting gift that will remain in place long after the village’s sesquicentennial festivities subside.

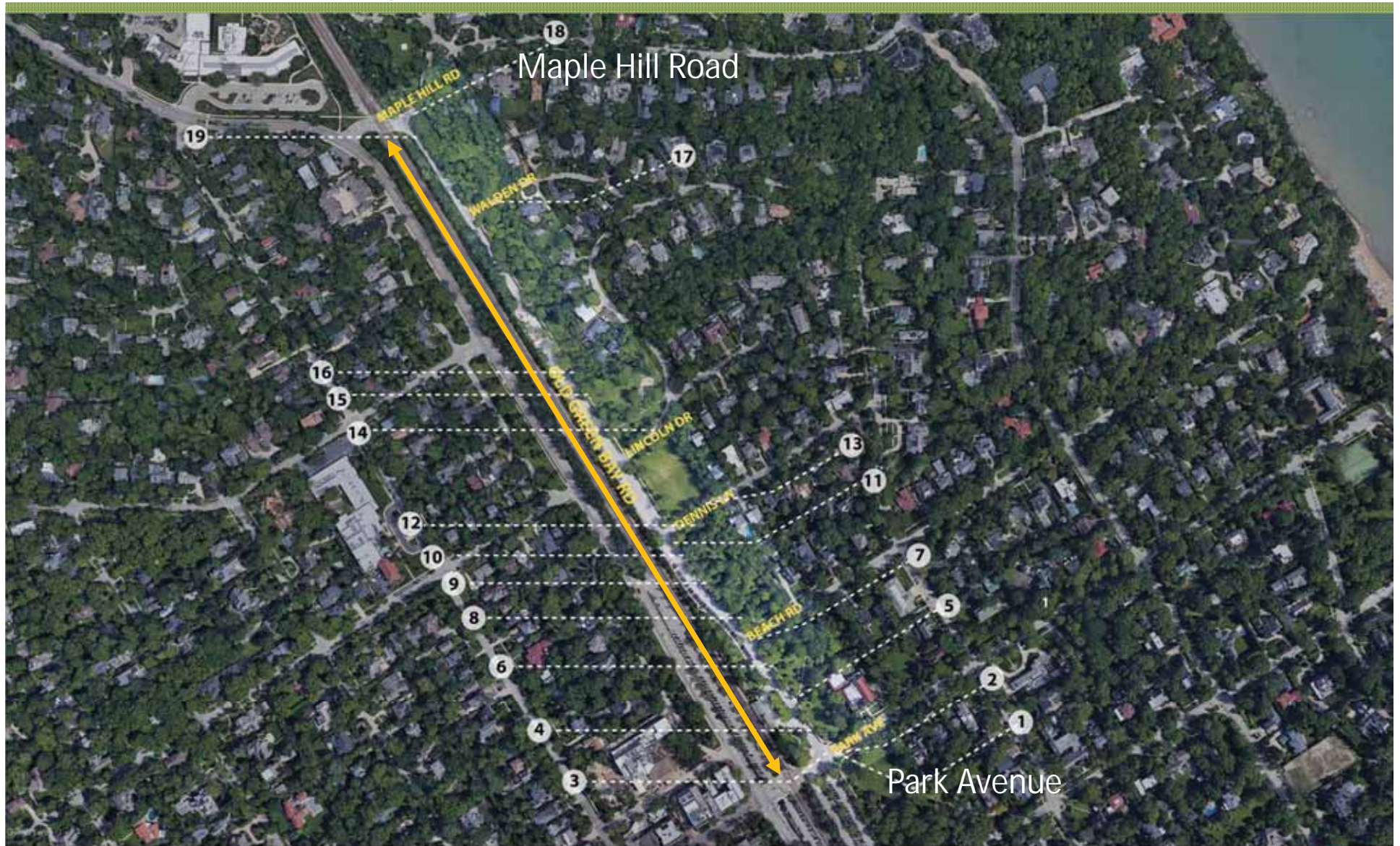
# The Park Districts' Reaction to All that Information

The Board of Park Commissioners of the Park District  
conducted visioning sessions

Engaged Altamanu to examine the  
Potential of a Multi-Use Trail along the  
Old Green Bay Road Linear Parks



# Proposed Project : .53 Miles Approx. 2,800 Feet





# More Than Seven and a Half Football Fields



# What's Involved?

---

5 Separate Parks, each with its own distinct character, viewsheds, settings, and spatial relationships.

A playground that needs to be replaced, Veterans Memorial, various gardens, historic artifacts and an urban forest with many mature (priceless) trees.

Issues within each park vary. Some Streets have no Pathways and there are No Park Pathways.

Drainage, current-use, potential-use, and relationship to residences are also important.



# What's are We Trying to Do?

---

Provide a Safe Environment for All, including Children, and Active Adults, to Exercise Together and Experience Our Parks.

Not Just a “Borrowed Landscape” to View as you Drive-By along the Road, but “being in the Parks under the Trees”.  
(ADA access into the Parks not just along the Street)

Rehabilitate the Park Facilities that We Have (Playground at Lincoln and Crescent constructed 26 years ago)

Add New Facilities of Interest to All but in particular the Young and Seniors



## Existing Conditions Analysis



# Major Arterial Nodes



Northern Gateway  
Maple Hill

Downtown Gateway  
Park Avenue

## Existing Conditions Analysis



# Only Crossings at Maple Hill and Park Avenue



Northern Gateway

Downtown Gateway

## Existing Conditions Analysis



# Connections to Sheridan Road



## Traffic Speeds Along Maple Hill



# Northern Gateway At Maple Hill : Issues Safety & Confusion



Which Way Do We Go?





Views Blocked by Utilities, Trees & Curve of Alignment





Watch Out for Traffic  
Fast Moving Traffic on Road Doesn't Stop





Cycle along the sidewalk





But many go straight across a busy intersection

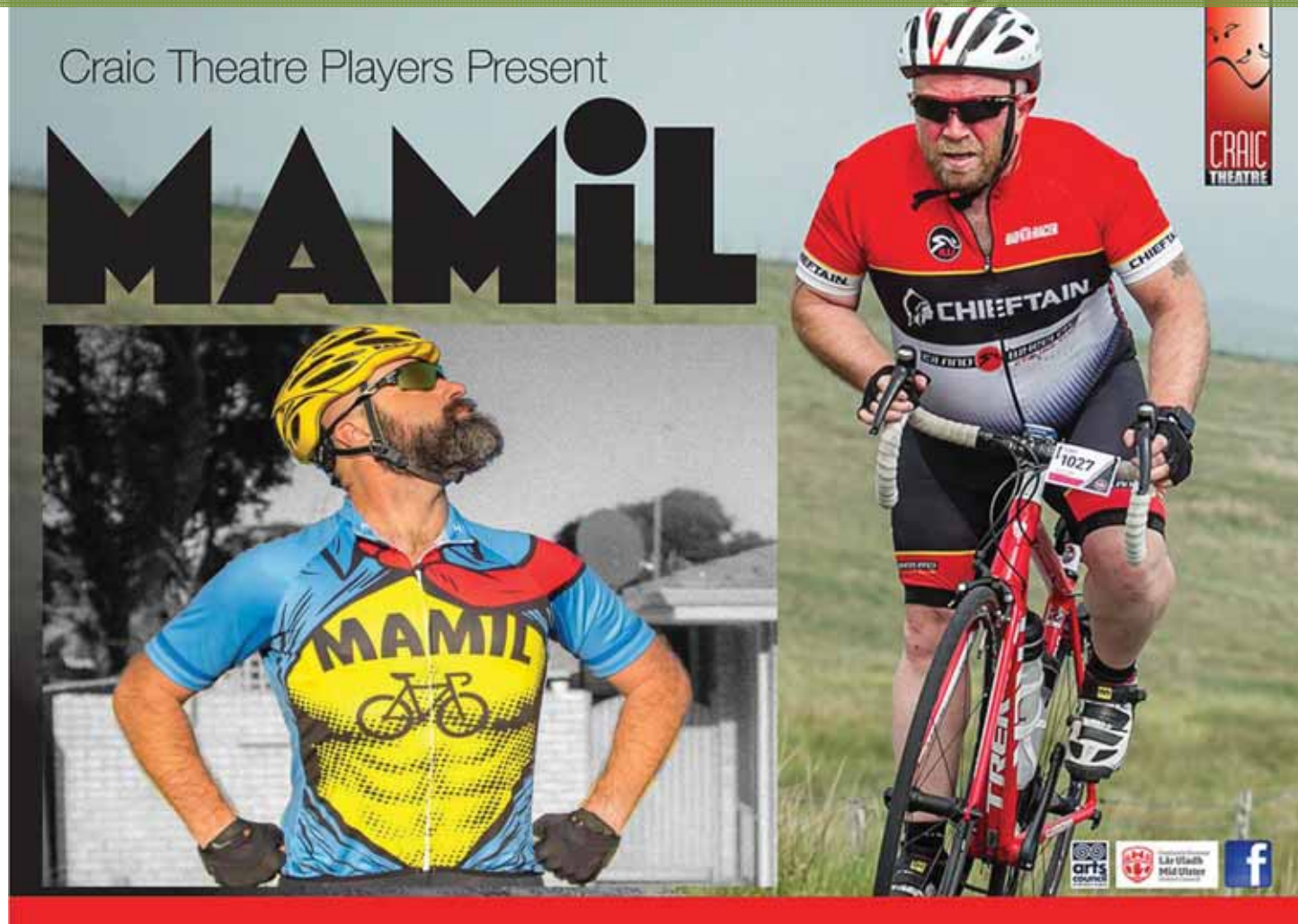




We are trying to encourage people to go safely into  
Park for the length of the Project



# Not Talking About M.A.M.I.L.s (Middle Aged Men in Lycra)



They will continue to use the fastest Route



# We are Thinking of Families, Seniors and Children



Many of Whom Use the Roadway



Thinking of Something More Like This Image





# And This : Intergenerational Play: Number 1 in Play Nationally



# Add "Play Together" Equipment Pods along the Trail

FRIENDSHIP SWING



OUTDOOR CARDIO WALKER



SPINNER



But Keep it Low Key!!!!!!

Some of the Potential Equipment



# Keep in Mind Many Heritage Oaks along Green Bay



1800s Oak Forests accounted for 60 % of the state's trees  
Today, of what remains only 5 percent are Oaks

Altamanu Inc.  
landscape architecture + urban design + planning

SMI GROUP





# Segments of the Project

The Quad



Gateway  
Veterans Memorial  
Display Gardens  
Oaks and Elms  
Liza's Gazebo

## Existing Conditions Analysis



# Sculpture Garden The Quad



Breakwater  
Sculpture  
Oaks and Elms

Gateway  
Veterans Memorial  
Display Gardens  
Arboretum  
Liza's Gazebo

## Existing Conditions Analysis



# Lincoln & Crescent Sculpture Garden The Quad



Playground  
Topography  
Head of Ravine  
Open/Sunken Field

Breakwater  
Sculpture  
Oaks and Elms

Gateway  
Veterans Memorial  
Display Gardens  
Arboretum  
Liza's Gazebo

## Existing Conditions Analysis



Meadow Lincoln & Crescent Sculpture Garden The Quad



Wet Habitat  
Volunteer Growth  
Open Meadow

Playground  
Topography  
Head of Ravine  
Open/Sunken Field

Breakwater  
Sculpture  
Oaks and Elms

Gateway  
Veterans Memorial  
Display Gardens  
Arboretum  
Liza's Gazebo

Existing Conditions Analysis



N. Woodland Meadow Lincoln & Crescent Sculpture Garden The Quad



Woodland w/  
Wet Areas

Wet Habitat  
Volunteer Growth  
Open Meadow

Playground  
Topography  
Head of Ravine  
Open/Sunken Field

Breakwater  
Sculpture  
Oaks and Elms

Gateway  
Veterans Memorial  
Display Gardens  
Arboretum  
Liza's Gazebo

Existing Conditions Analysis



N. Gateway Pk N. Woodland Meadow Lincoln & Crescent Sculpture Garden The Quad



Open Field  
Volunteer Growth  
Stone Walls  
Takiff Center

Woodland w/  
Wet Areas

Wet Habitat  
Volunteer Growth  
Open Meadow

Playground  
Topography  
Head of Ravine  
Open/Sunken Field

Breakwater  
Sculpture  
Oaks and Elms

Gateway  
Veterans Memorial  
Display Gardens  
Arboretum  
Liza's Gazebo

## Existing Conditions Analysis





“The Quad”



# Existing Desire Lines (Like a University Quad)



Desire Lines lead to the Station and Downtown

“The Quad”





Northern Desire Line begins on Beach Road

Altamanu Inc.  
landscape architecture + urban design + planning







## Passes by Ancient Oaks



# Practical Recreational : Basketball



“The Quad”



# However there is a Sacred Element



Entry



# However there is a Sacred Element



Entry, Veterans Memorial,



# However there is a Sacred Element



Entry, Veterans Memorial, Church,



# However there is a Sacred Element



Entry, Veterans Memorial, Church, Liza's Gazebo,



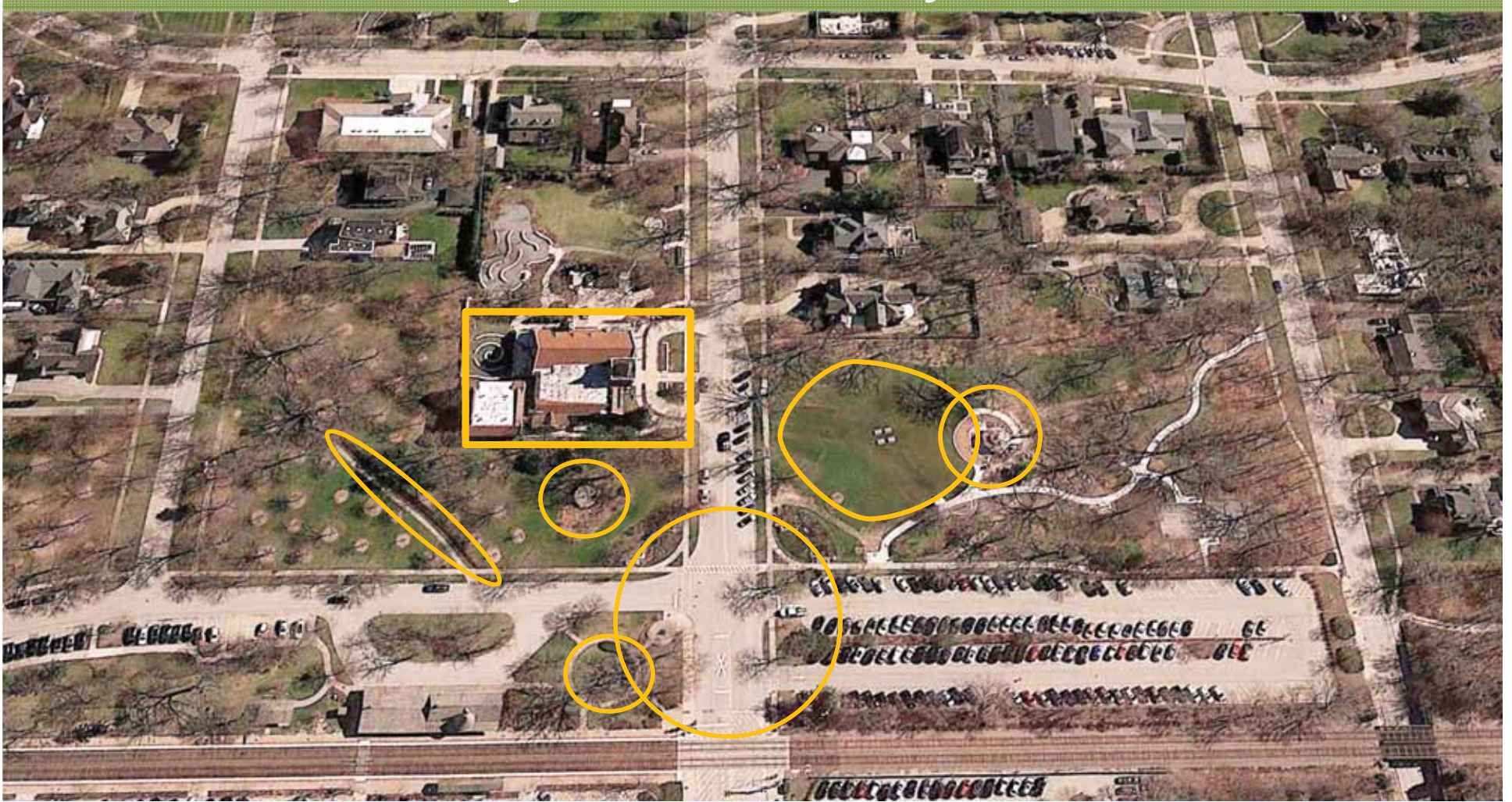
# However there is a Sacred Element



Entry, Veterans Memorial, Church, Liza's Gazebo, Gardens,



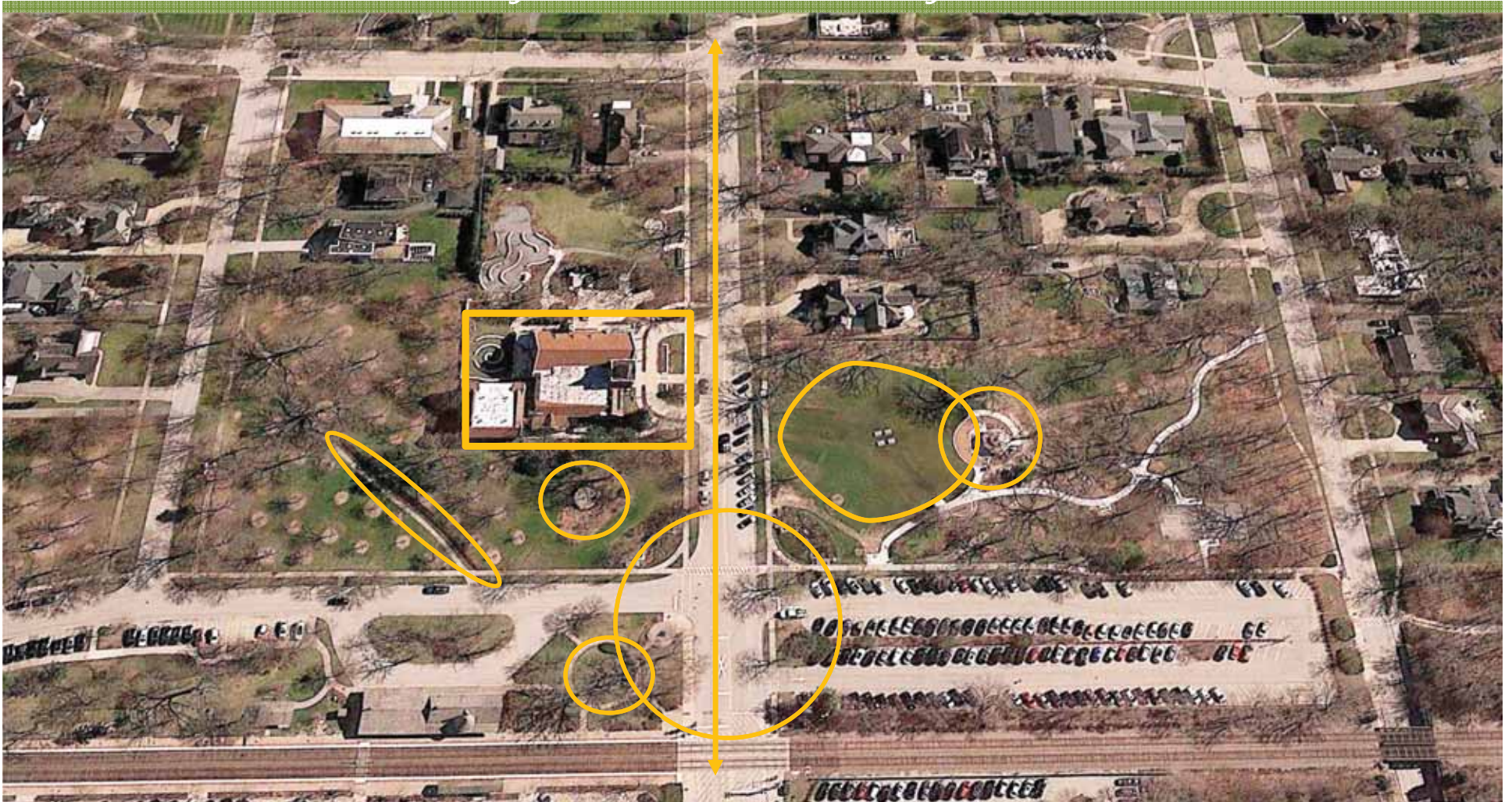
# However there is a Sacred Element



Entry, Veterans Memorial, Church, Liza's Gazebo, Gardens,  
Community Gathering,



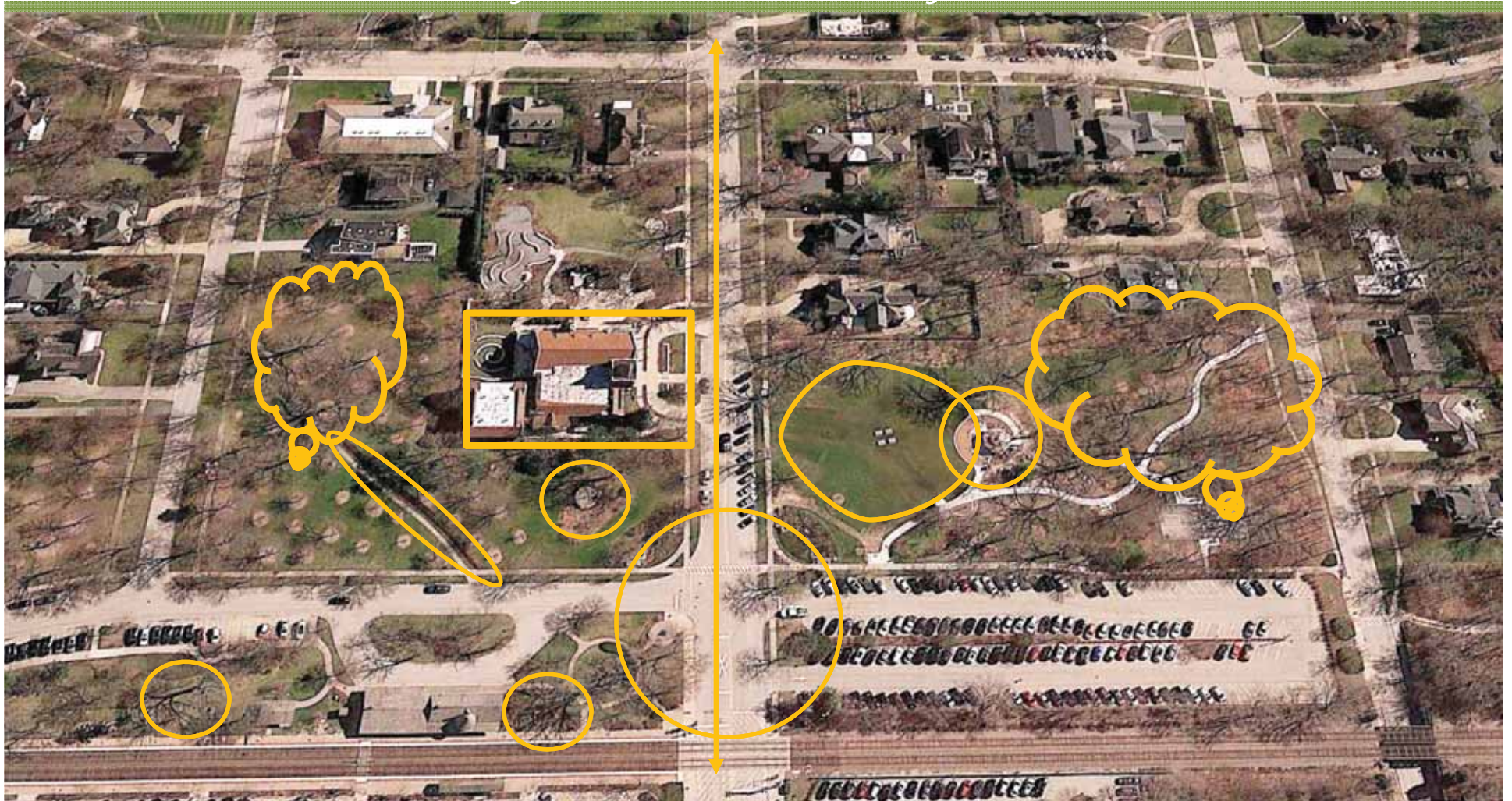
# However there is a Sacred Element



Entry, Veterans Memorial, Church, Liza's Gazebo, Gardens, Community Gathering, Link to the Lake/Downtown



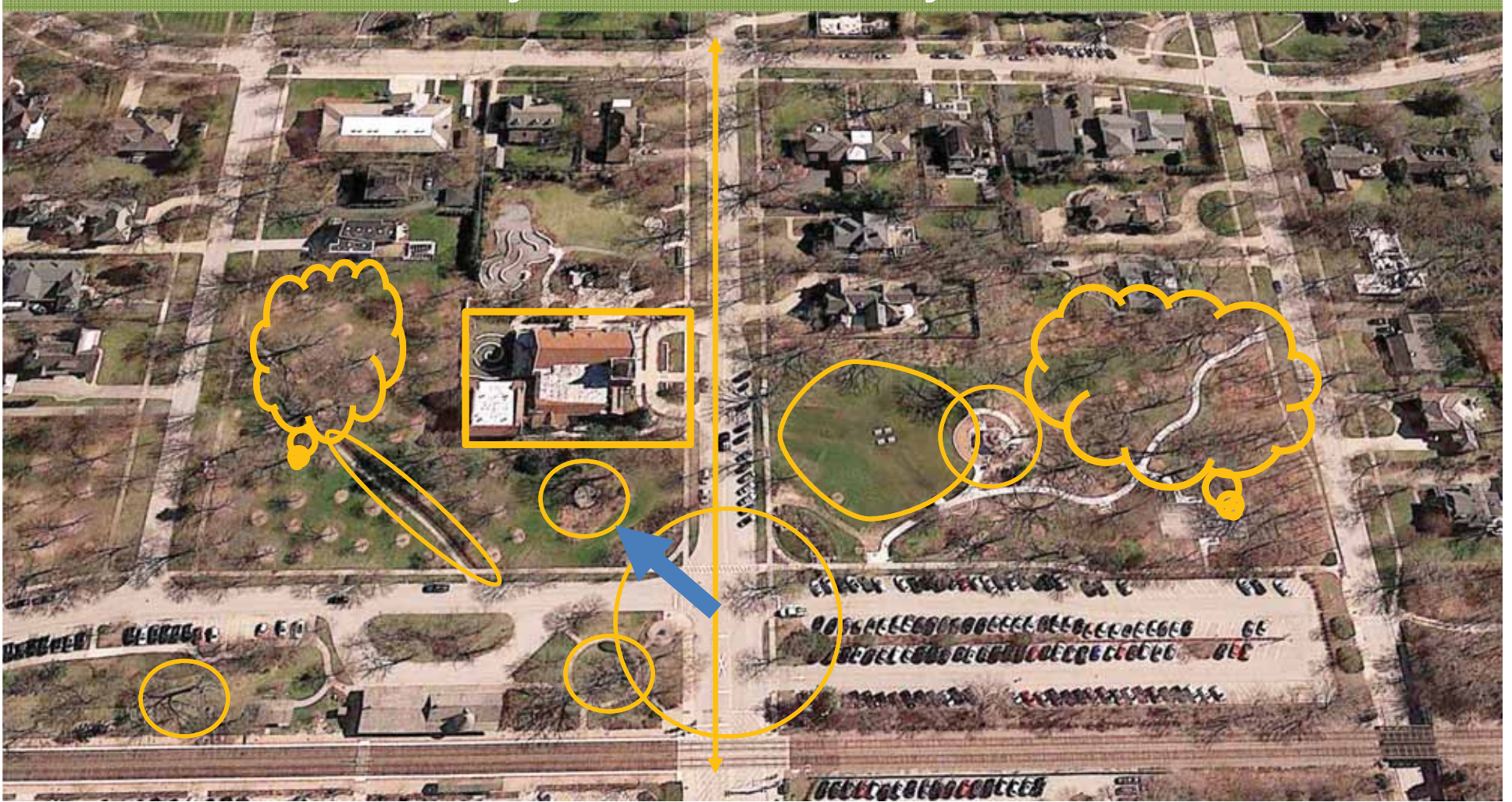
However there is a Sacred Element



And Superb Oaks and other Mature Trees



# Scope is From Park Avenue North



## Start with Entry and Veterans Memorial





## Gateway Planting on Park Avenue



# Attractive Planting and Stone Walls but Domestic in Scale



Gateway Planting on Park Avenue





Veterans Memorial

Stone Walls and Flower Display

## Existing Stone Walls and Veterans Memorial





## Existing Stone Walls and Veterans Memorial

Altamanu Inc.  
landscape architecture + urban design + planning







Attractive Up Close





## Veterans Memorial Hidden and No ADA Access

Altamanu Inc.  
landscape architecture + urban design + planning







Existing





## 1<sup>st</sup> Proposed Entry and Veterans Memorial

Expose Stonework, Keep Some Area for Flower Display, Provide Views to Memorial, Complete Mound, Add Walls





Residents stated that Cobbles were not suitable for bikes. We can use other Pavers





Existing View to Memorial from Green Bay





## Proposed View of Expanded Memorial from Old Green Bay





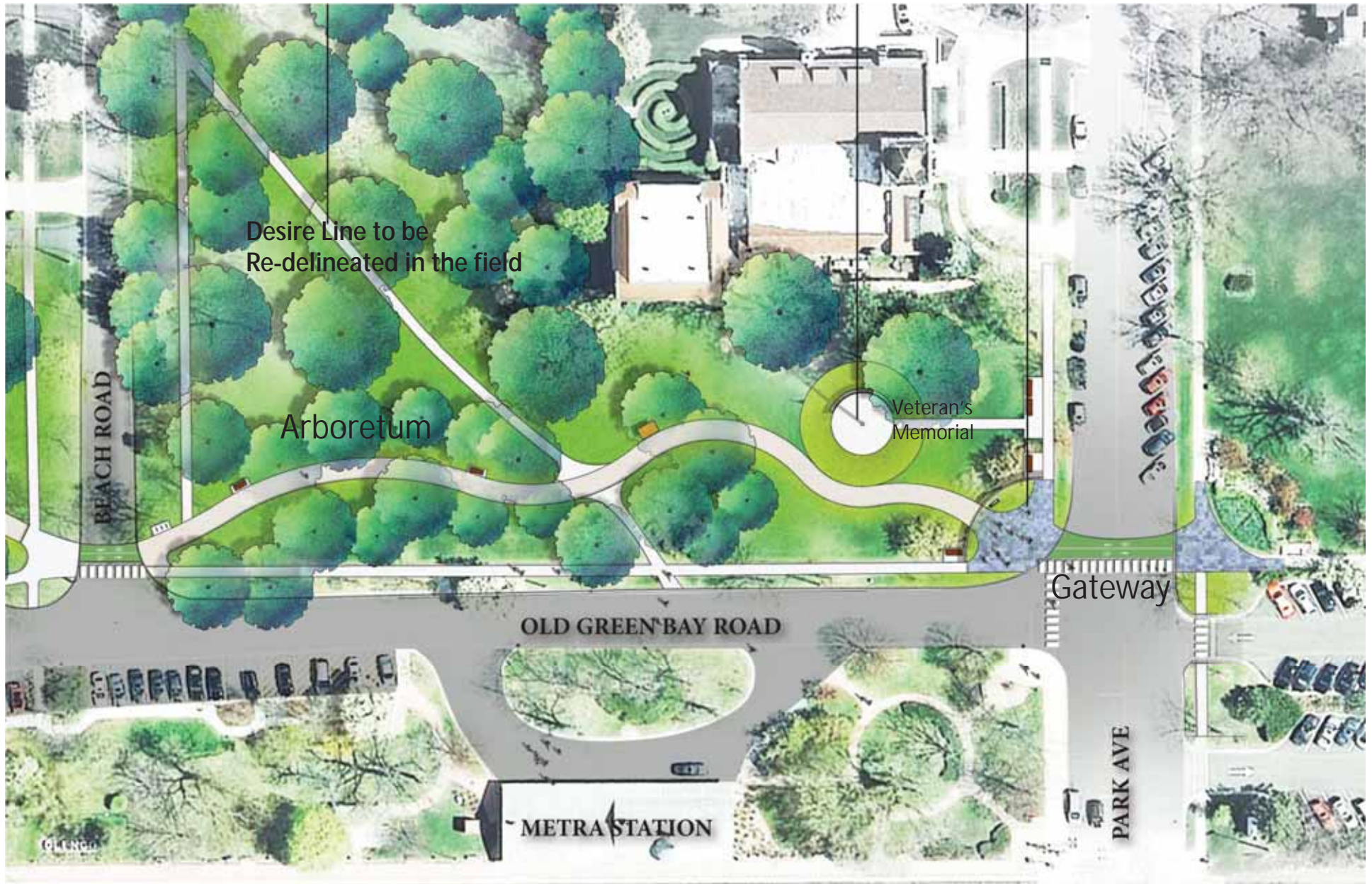
## Existing Veterans Memorial





Proposed: Accessible, Dignified





## The Proposed Plan for the Quad



# Sculpture Garden The Quad



Breakwater  
Sculpture  
Oaks & Elms

Gateway  
Veterans Memorial  
Display Gardens  
Oaks Set Back  
Band Shell

## Existing Conditions Analysis









Do not wish to Damage  
Root Structure of Mature  
Oaks and Elms





There are Two Proposals  
Proposal 1: Swing Path East To Open Space and Younger Trees





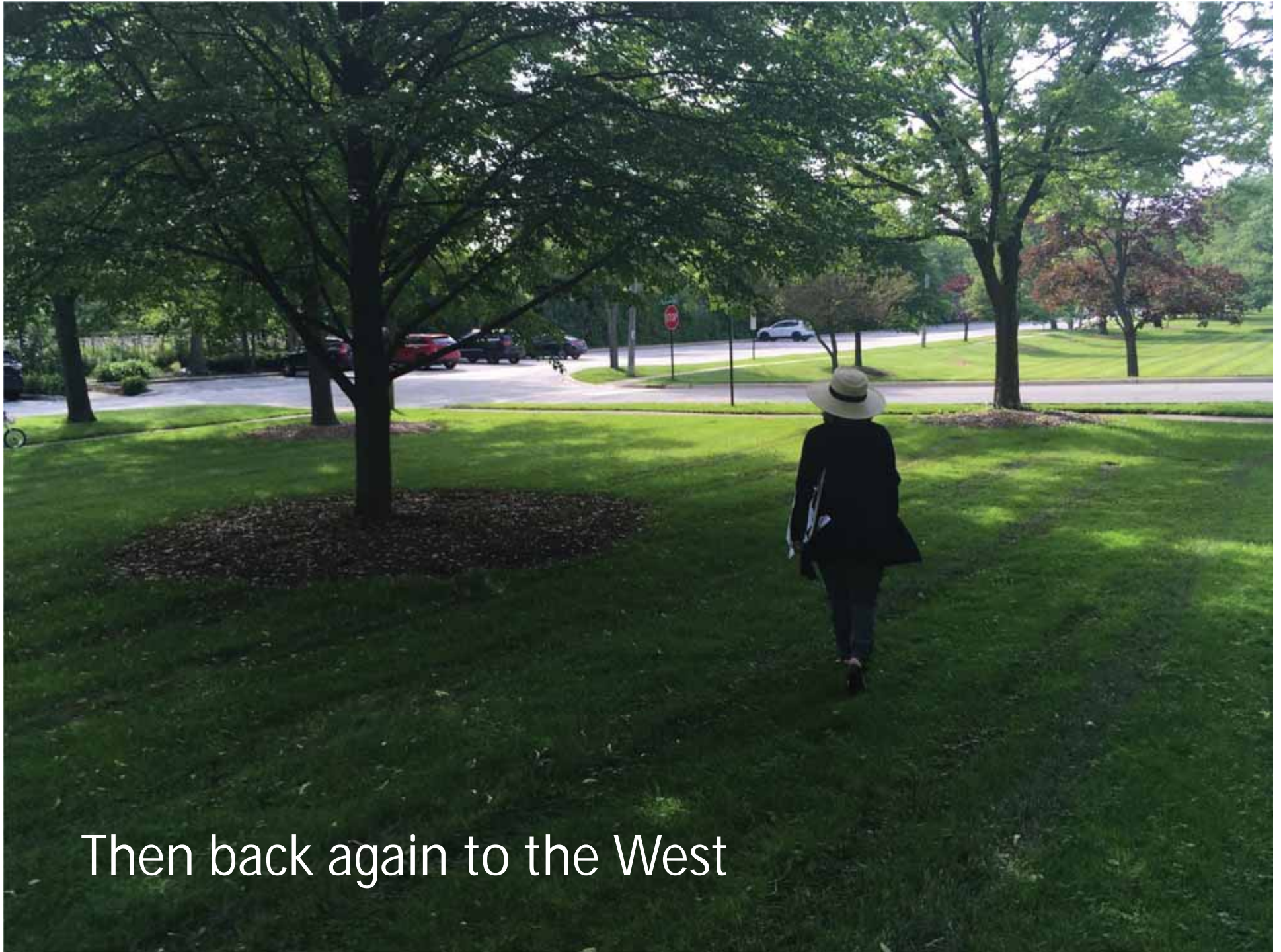
Swing Path East : To Open Space and Younger Trees  
Add a Substantial Tree and Shrub Buffer to East





Plenty of Space





Then back again to the West









Proposal 2 : Hug the Sculpture









Add Root Aeration Matting to Elm





## Example Root Aeration Matting



Add Sculpture : But be Restrained in Choices and location  
Could be Rotating Pieces on-loan

Add Sculpture Over Time





Work of Sophie Ryder



Add Sculpture Over Time







Add Select Spring Ephemerals Mow after Flowering





Example Mills Park

Example of Spring Ephemerals, but we would use Natives





## Proposed Plan for Sculpture Garden



# Lincoln & Crescent Sculpture Garden The Quad



Playground  
 Topography  
 Head of Ravine  
 Open/Sunken Field

Breakwater  
 Sculpture  
 Oaks and Elms

Gateway  
 Veterans Memorial  
 Display Gardens  
 Arboretum  
 Liza's Gazebo

## Existing Conditions Analysis





# Lincoln Dennis: Multi-Use Field





## Lincoln Dennis: Open Space





## Lincoln Dennis : Drainage Issues





## Lincoln Dennis: Use Topography





Use Topography & Add Native Planting

Altamanu  Inc.  
landscape architecture + urban design + planning

  
SMP GROUP

  
GLENCOE  
PARK DISTRICT





## Maintenance:

Turf Grass = 2.8 cents / Sq. Ft. / Year

Natural Area = 16.2 cents / Sq. Ft. / Year





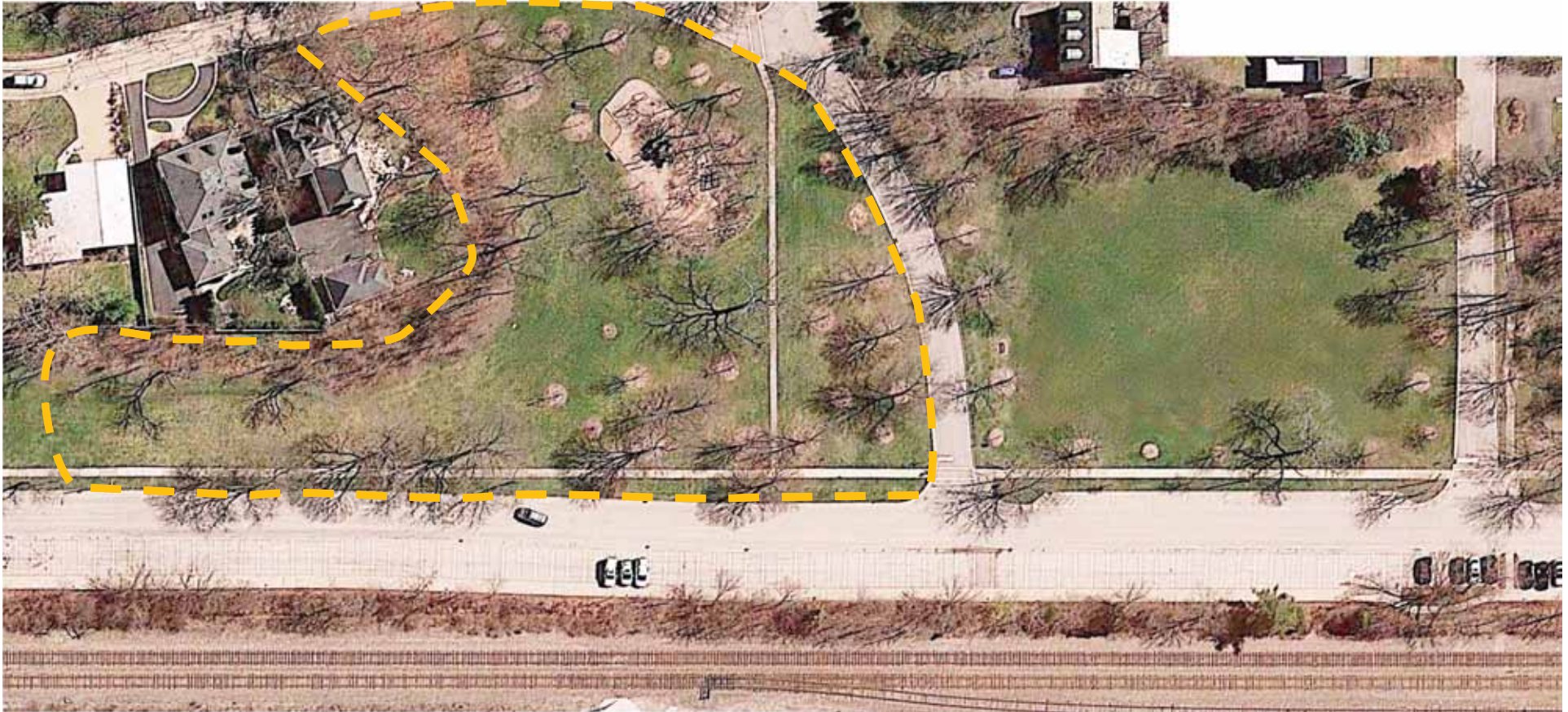
## 1st Proposed Plan





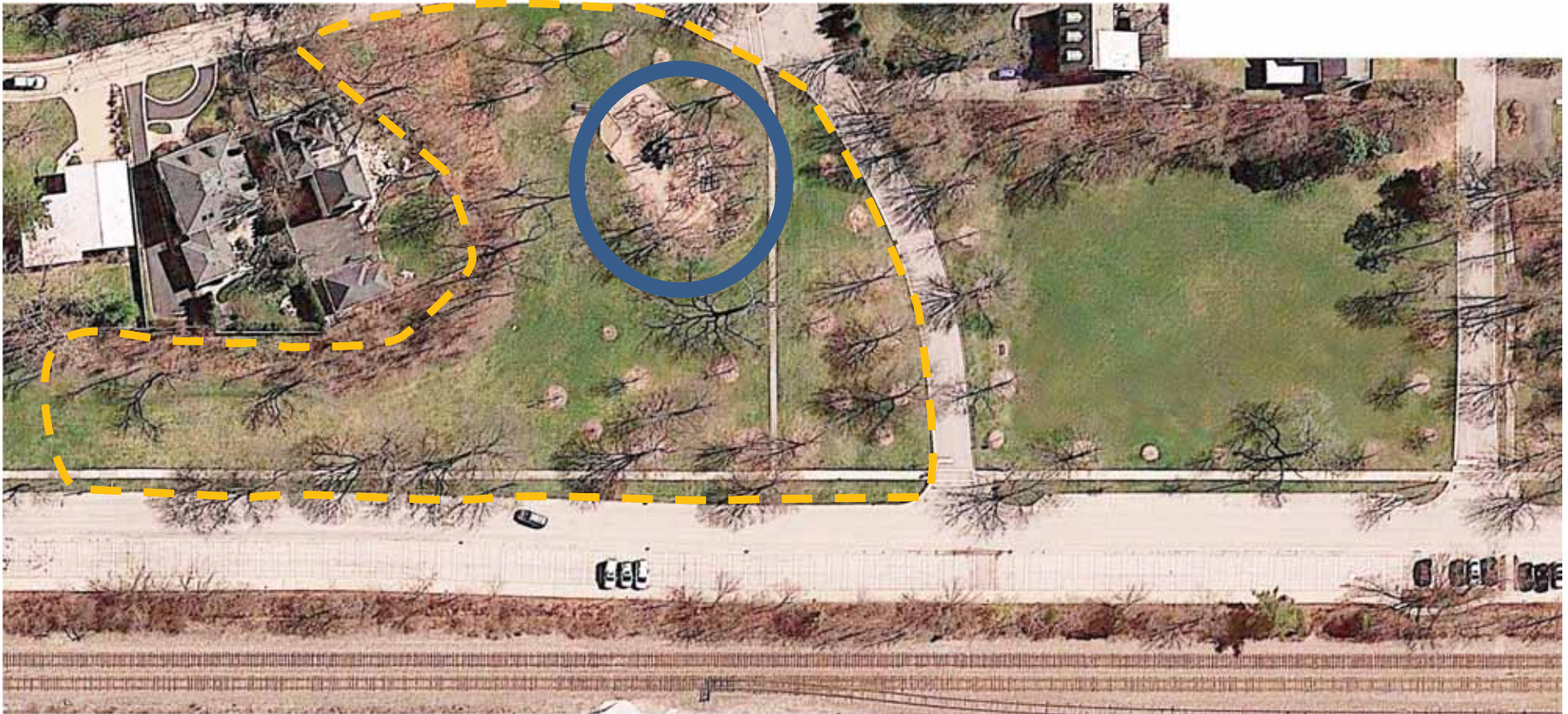
## Current Plan After Public Comment





# Lincoln Crescent





Existing Playground has to be Replaced



## Existing Playground on Rise



# Make use of the Slope as at West Park



Playground



# Potential Play Equipment



## Other Potential Additions



Interactive Fountain, Small in Scale





# Discovery Garden Oak Park Conservatory





## Discovery Garden Oak Park Conservatory



## Discovery Garden Oak Park Conservatory



# Bring Both Concepts Together



Interactive Water Feature

Runnel, runs down slope

Pool (connect to wet meadow planting and existing storm water catch basin)

## *Other* Potential Additions



Example : Hand-Cranked Miniature Train





Main Playground

Water Fountain

Group Swings

Miniature Train

## Potential Hand Driven Train







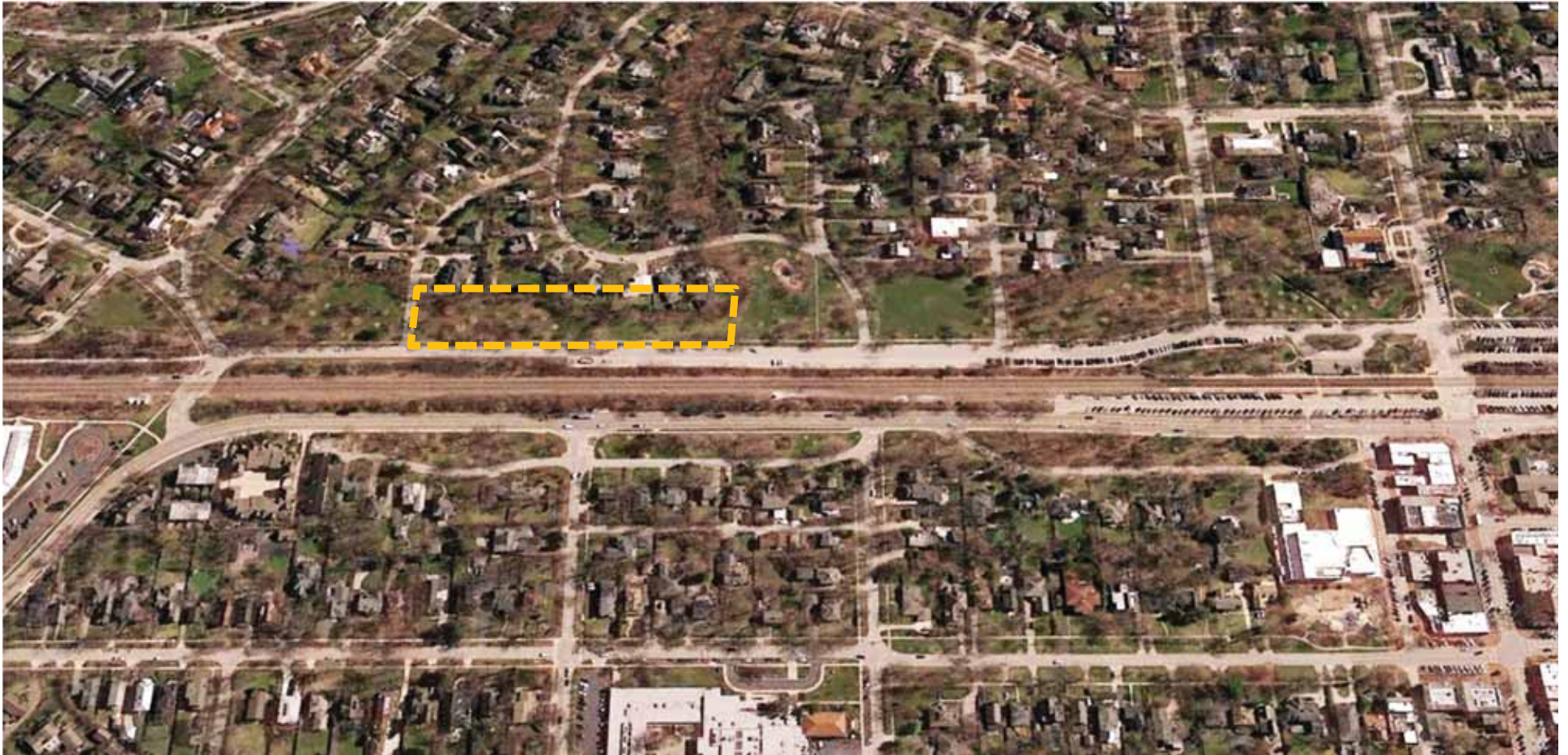
160 Feet to nearest  
Residence to the SE

200 Feet to nearest  
residence to the NE

Potential Hand Driven Train



# Meadow



Wet Habitat  
Volunteer Growth  
Open Meadow

## Existing Conditions Analysis





# Pinch Point to Walden





# Pinch Point





Dry, Drains to East





Wet Meadow





Native Planting Along Edge

Play together pod

Play together Pod

# Meadow and Wet Meadow



## Woodland Discovery



Woodland w/  
Wet Areas

## Existing Conditions Analysis





## Woodland Discovery







# Direction to Team

---

- Create something Unique
- Something inspired by Nature
- Can be used for Fund Raising
- Can be Expanded Over-Time

Woodland Discovery



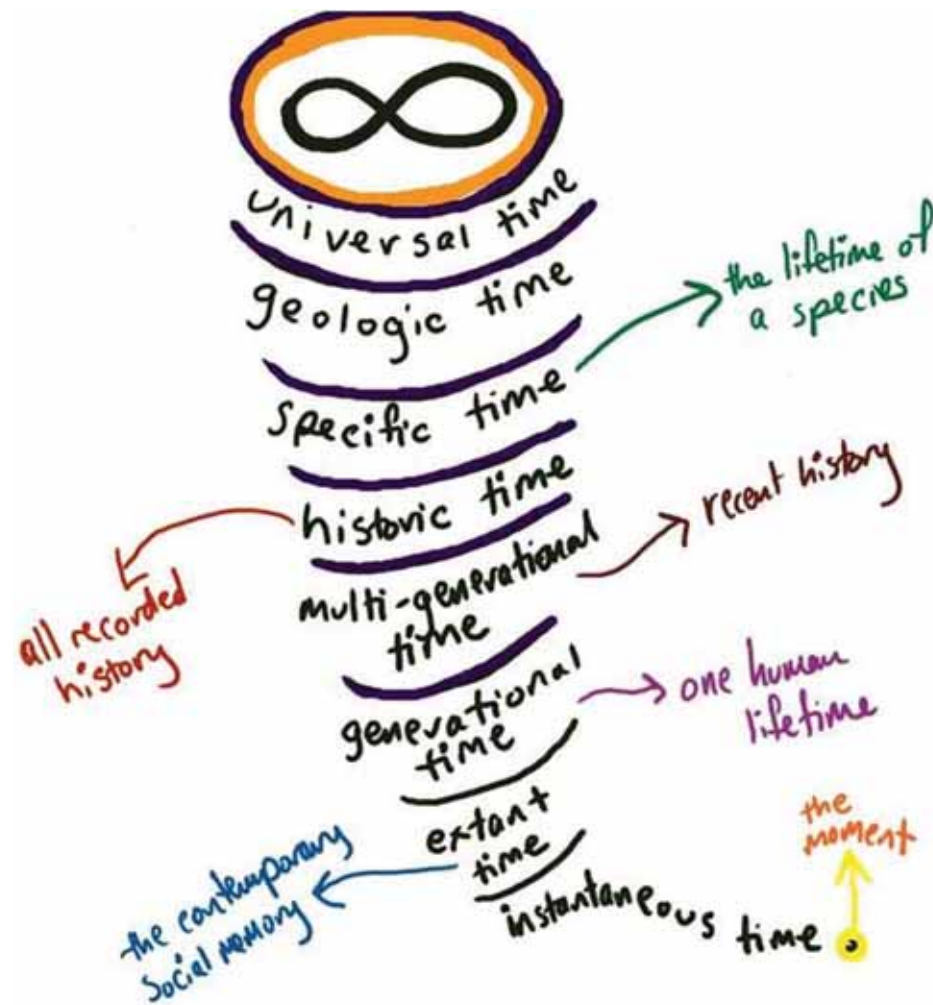
- 
- Create something Unique
  - Something inspired by Nature
  - Can be used for Fund Raising
  - Can be Expanded Over-Time

Woodland Discovery



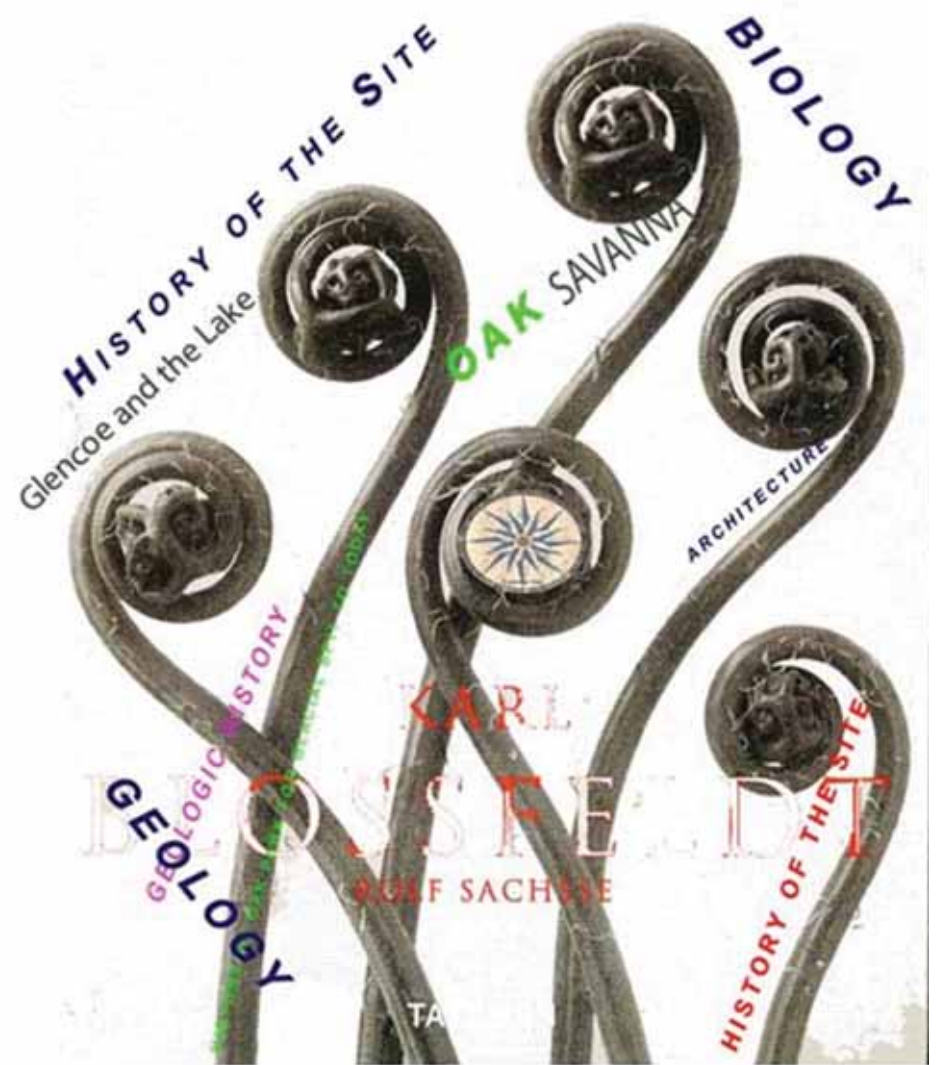
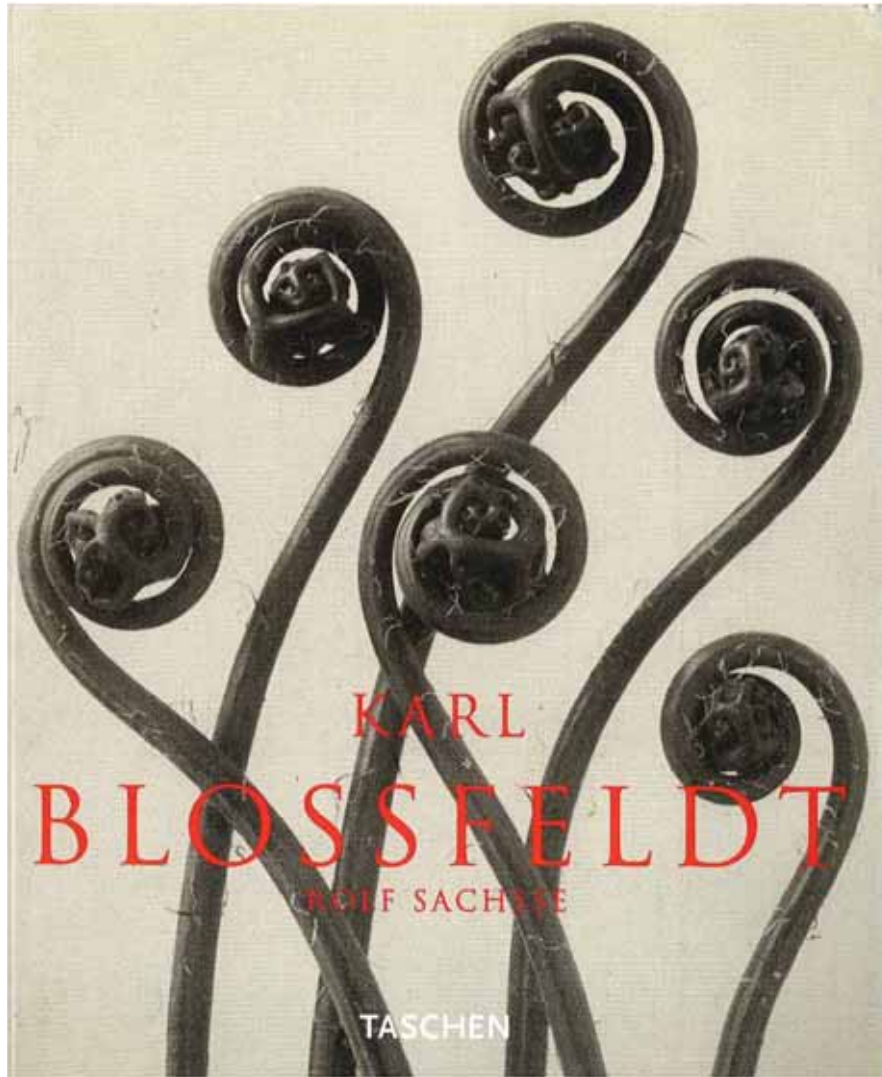
# Create a Labyrinth & Tell The Story of Glencoe

Lines in the grass each with a different timeline and different local info?



Woodland Discovery

# Inspiration from Nature and Karl Blossfeldt



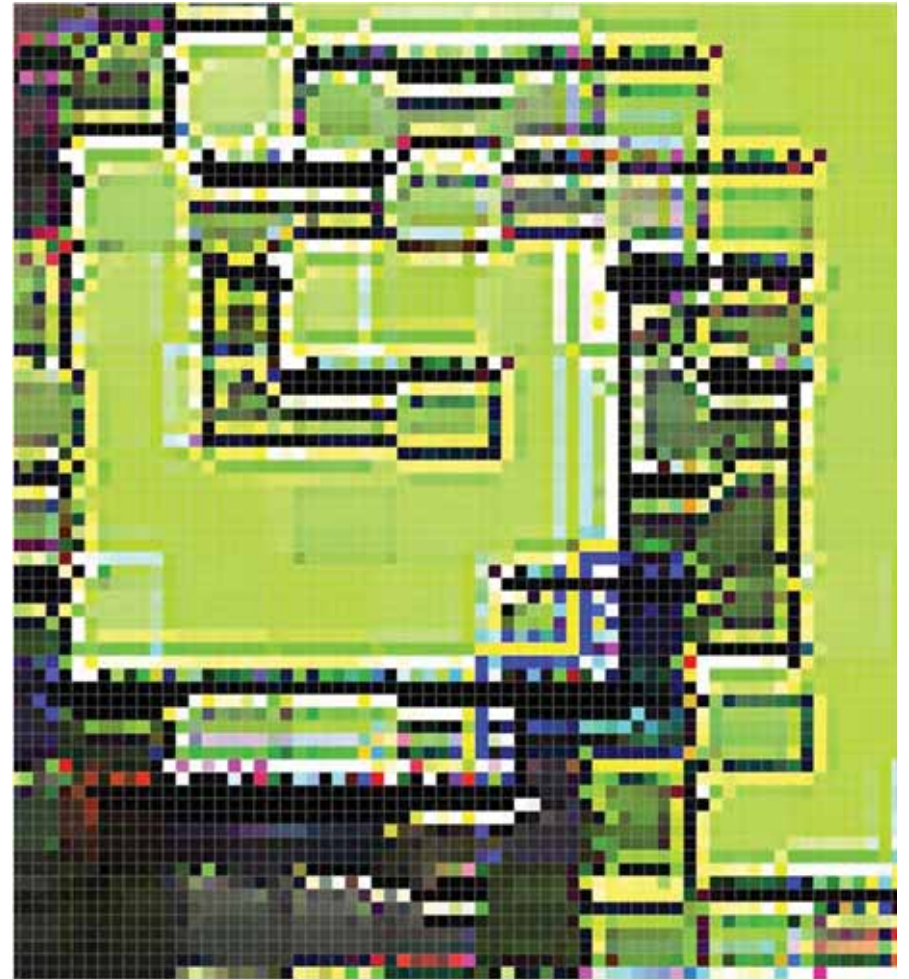
Woodland Discovery



# Design Process : Pixelate and Make into Rectangles



Design Process : Can be any size and of any complexity  
(Scale Invariance: Pattern Applies at all Scales)







Example Labyrinth: Mills Park : A single Journey  
"Unicursal"









# Glencoe's Woodland Labyrinth

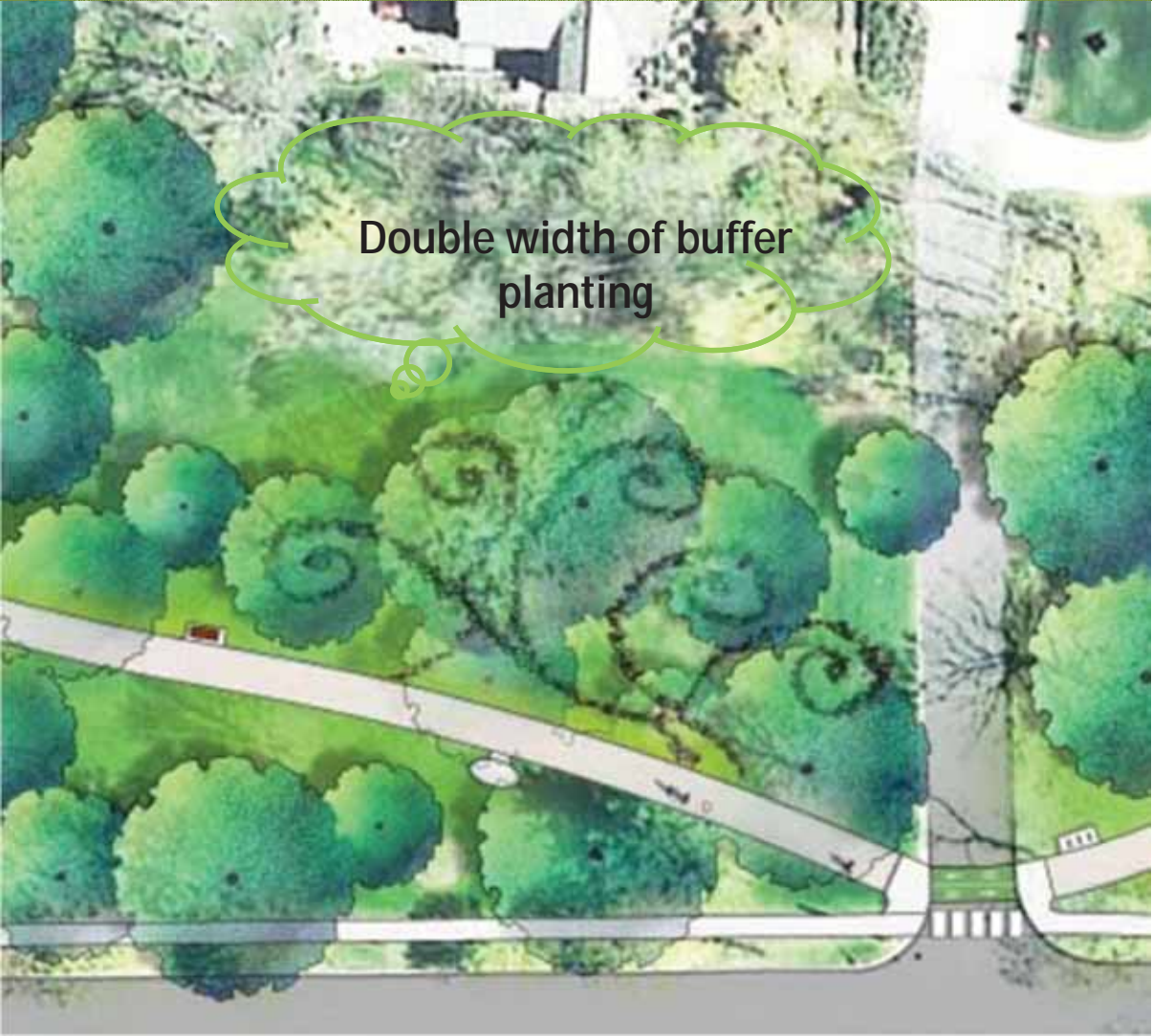


# 80 Feet Minimum from Residence, It could be More



## Glencoe's Woodland Labyrinth

# And Double Width of Buffer Planting



## Glencoe's Woodland Labyrinth



If we want to foster interest in cycling need events for kids



Woodland Discovery

# Add a Children's Training Circuit



Woodland Discovery





# Plan of Woodland Discovery

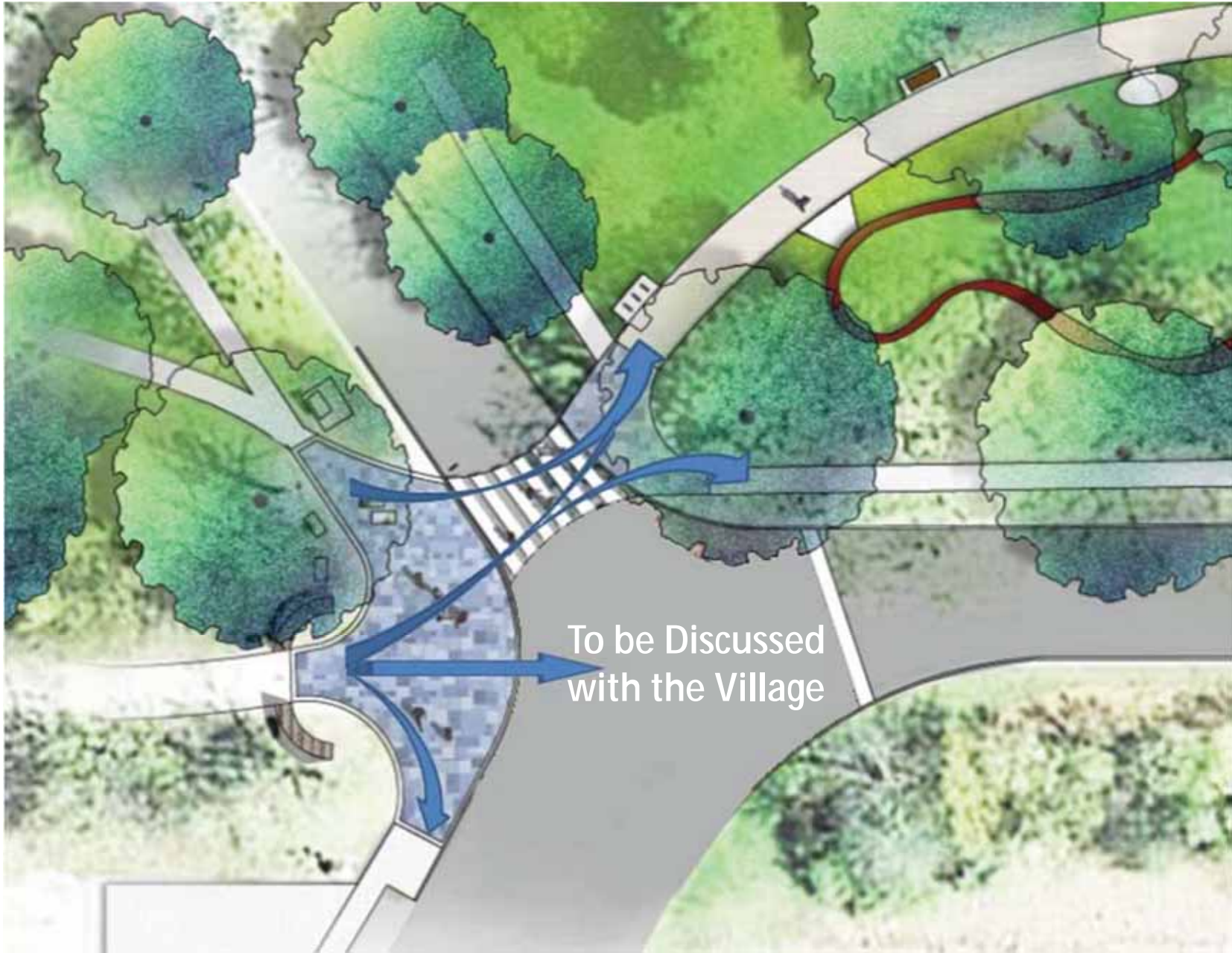


Brings us back to the Northern Gateway

Northern Gateway







# Proposed Plan Northern Gateway

Altamanu Inc.  
landscape architecture + urban design + planning

