



**GLENCOE PARK DISTRICT
SPECIAL PROJECTS AND FACILITIES MEETING
Monday, February 13, 2017 - 6:30 p.m.
Takiff Center**

Consistent with the requirements of the Illinois Compiled Statutes 5 ILCS 120/1 through 120/6 (Open Meetings Act), notices of this meeting were posted.
Meeting Location: Takiff Center, 999 Green Bay Road, Glencoe, IL 60022

AGENDA

- I. Call to Order
- II. Roll Call
- III. Presentation on West Playground Conceptual Designs
- IV. Matters from the Public
- V. Presentation on Astor Place Playground Conceptual Designs
- VI. Matters from the Public
- VII. Other Business
- VIII. Adjournment

The Glencoe Park District is subject to the requirements of the Americans with Disabilities Act of 1990. Individuals with disabilities who plan to attend this meeting and who require certain accommodations in order to allow them to observe and/or participate in this meeting, or who have questions regarding the accessibility of the meeting or facilities, are asked to contact the Park District at 847-835-3030.
Executive Director Email: lsheppard@glencoeParkDistrict.com

III. Presentation on West Playground Conceptual Designs

V. Presentation on Astor Place Playground Conceptual Designs

**The presentation by AltaManu and
possible documents will be shared
at the Committee meeting.**

Glencoe Park District
February 13, 2017
Special Projects and Facilities Committee Meeting



West Park and Astor Park Playground Renovations February 13th 2017

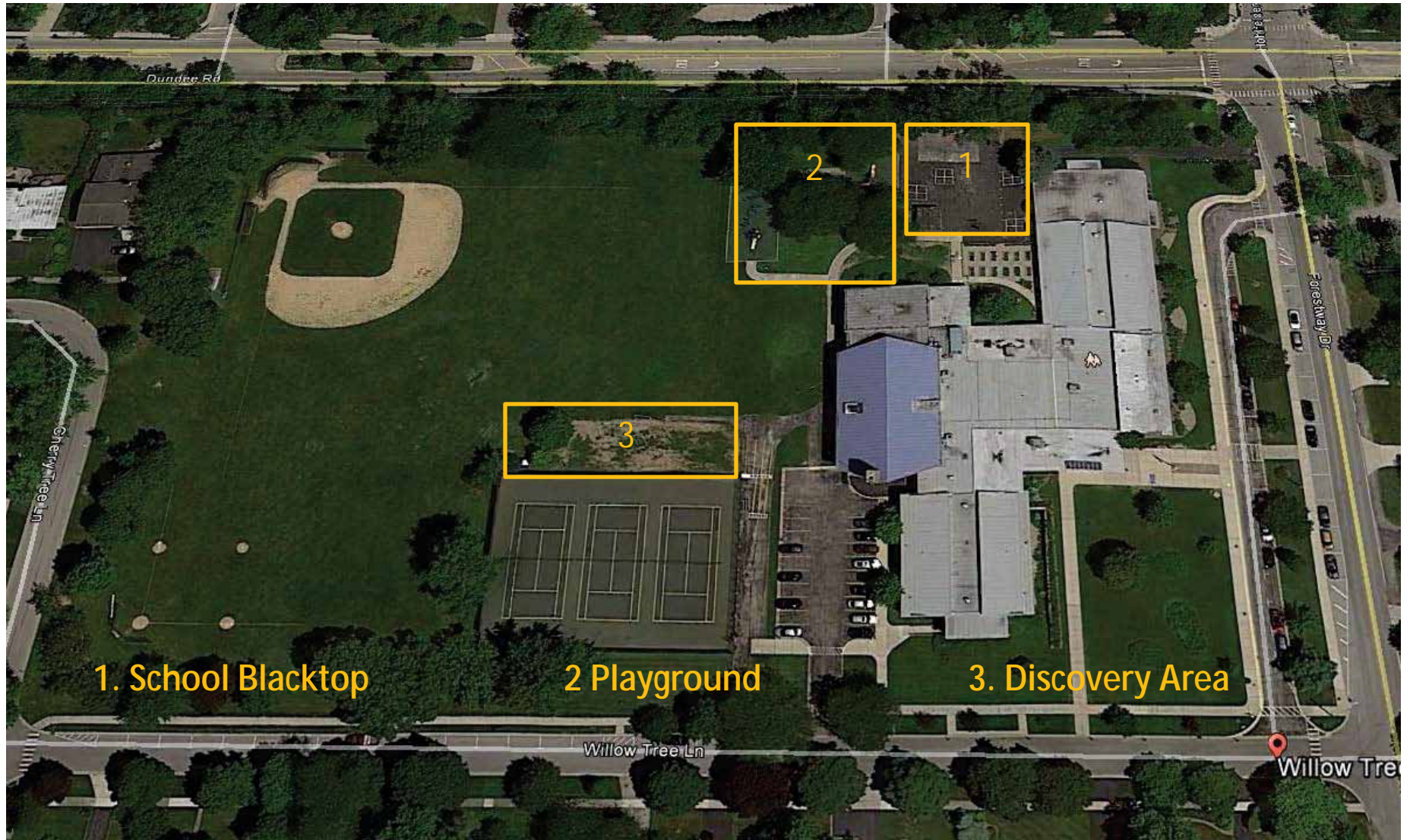


Delighted to be Here!!!

West Park Playground : Existing Site Aerial



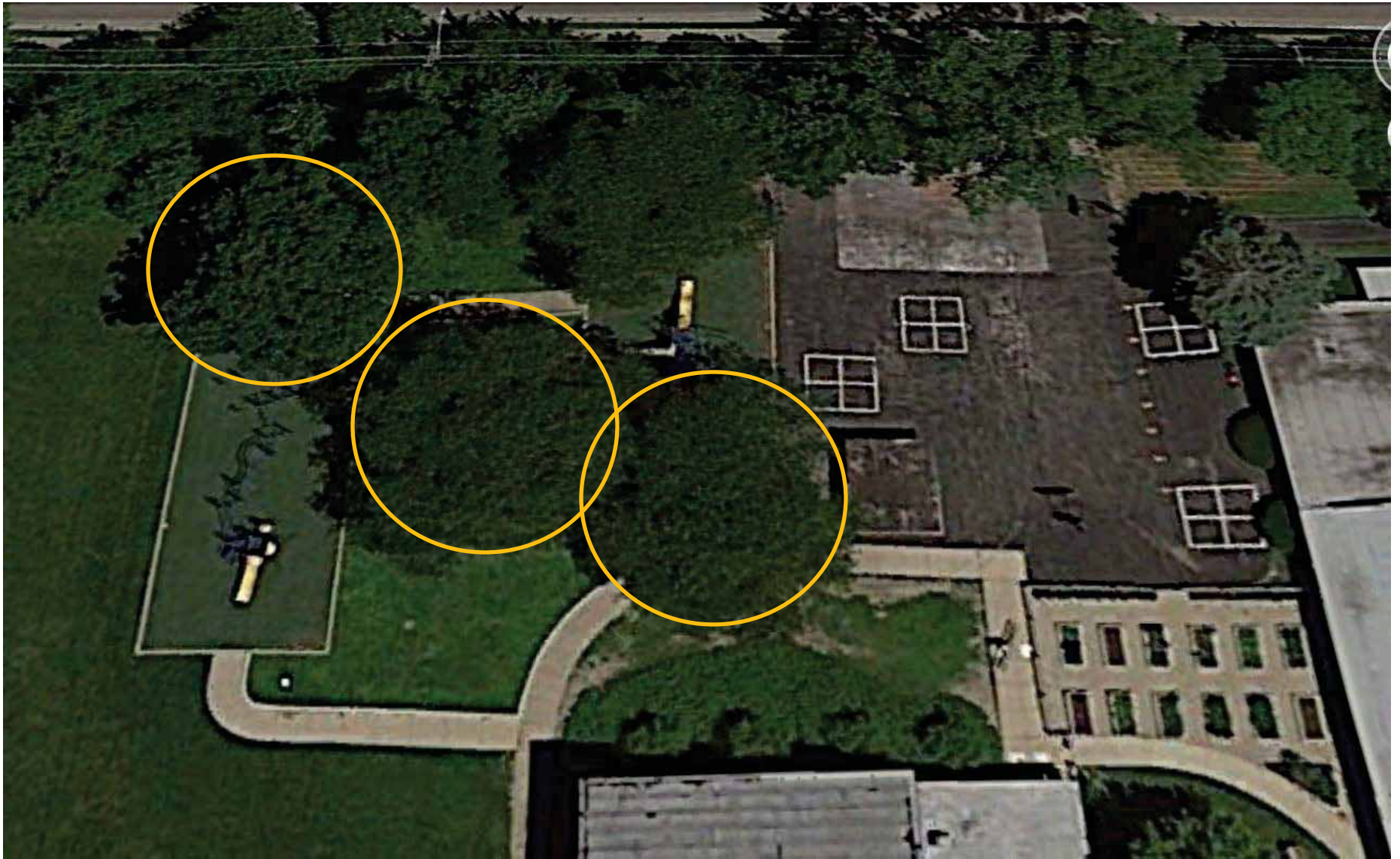
West Park Playground : Projects



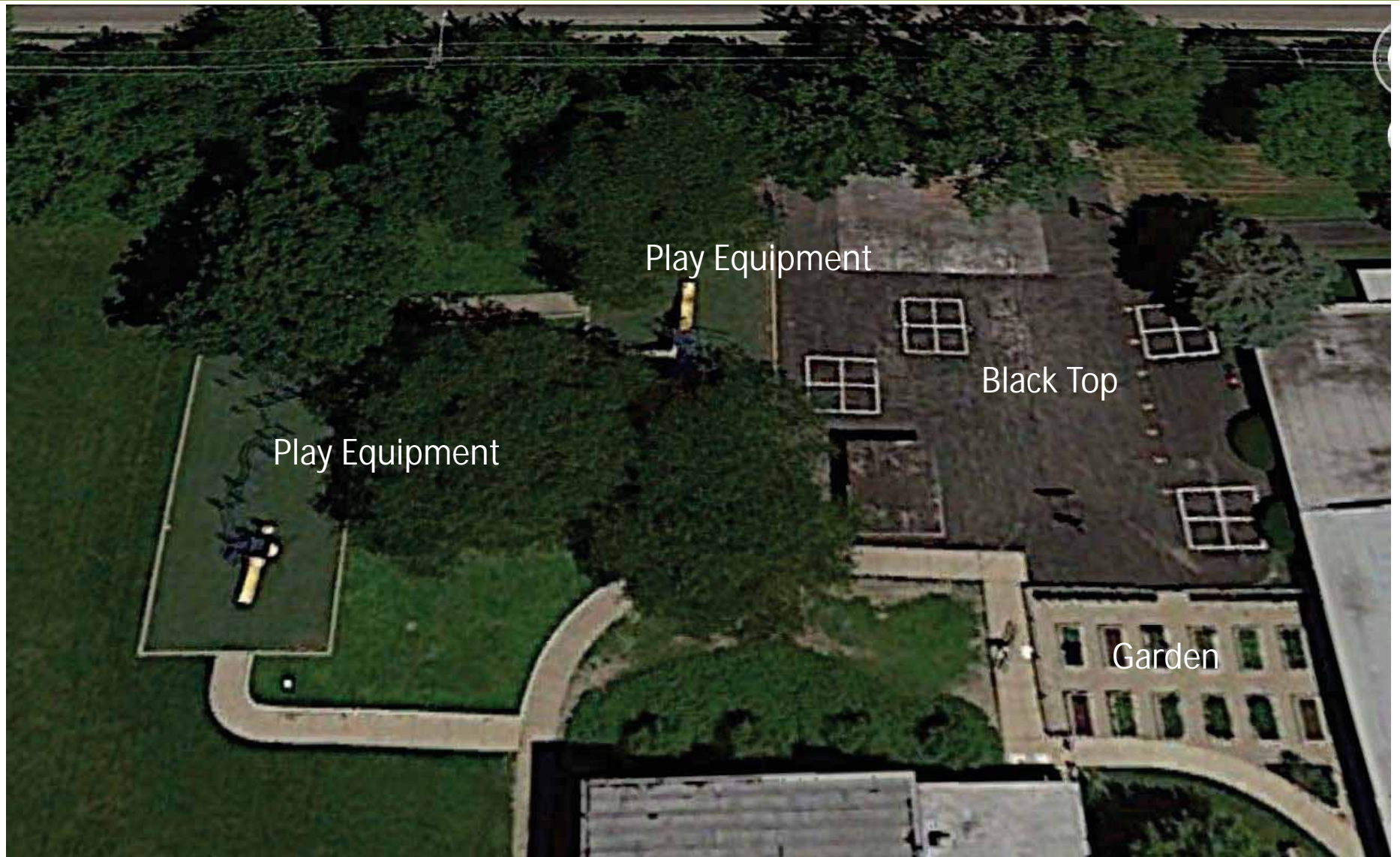
West Park Playground Existing Site Aerial



West Park Playground Existing Trees



West Park Playground Existing Site Aerial



West Park Playground : School Black Top



West Park Playground : Painted Black Top Examples



West Park Playground : School Black Top Proposals

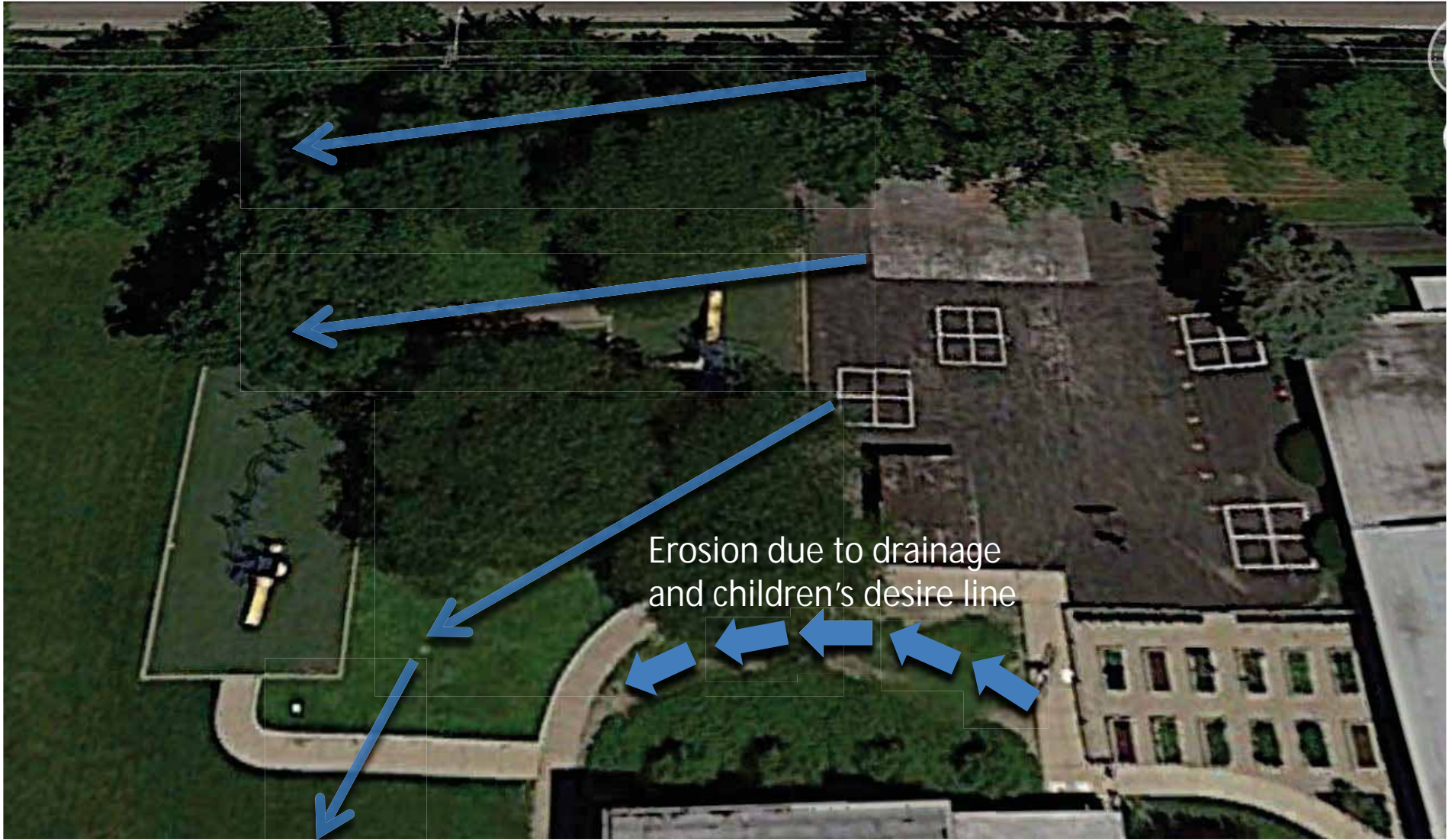
Full Junior Court & Multiple Games



3 Hoops and Simplified Layout



West Park Playground Drainage



Erosion due to drainage and children's desire line

West Park Playground Issues: Slope, Drainage and Erosion



West Park Playground Issues: Slope, Drainage and Erosion



West Park Playground Issues: Slope, Drainage and Erosion



West Park Playground Issues: Slope, Drainage and Erosion



West Park Playground Issues: Slope, Drainage and Erosion



West Park Playground : School and PD Priorities

- Sustainability
- Accessibility
- Upper body/Overhead events
- Buddies Bench
- Use poured-in-place.
- Minimal interactive play panels for 5-12
- Potential Discovery Area to the north of the tennis courts 2-5

Not Acceptable:

- No swings
- No Metal Slides
- Tube Slides/Crawl Tunnels
- Bubble Panels
- Roller and Metal slides
- Wooden Components
- Diggers
- Spring toys

West Park Playground : School and PD Priorities

School and Park District Staff Stated:

- Topography to be highlighted
- Slides and climbing features in topography
- Slides at grade if possible

- School serves 8-10 year olds, requested separate 2-5 year old area
- Nature/Discovery area could serve mainly 2-5 year olds
- Park District could provide woodchips, logs cut into different sizes for climbing, seats, tables, etc.
- Would include boulders

Constructions start date June 12th. Completion before August 10th

West Park Playground : Examples School Liked



Climbing Features and Unusual Paths

West Park Playground : Examples Long Slides



All liked the concept but needs lots of slope

West Park Playground : Examples Slopes Sites



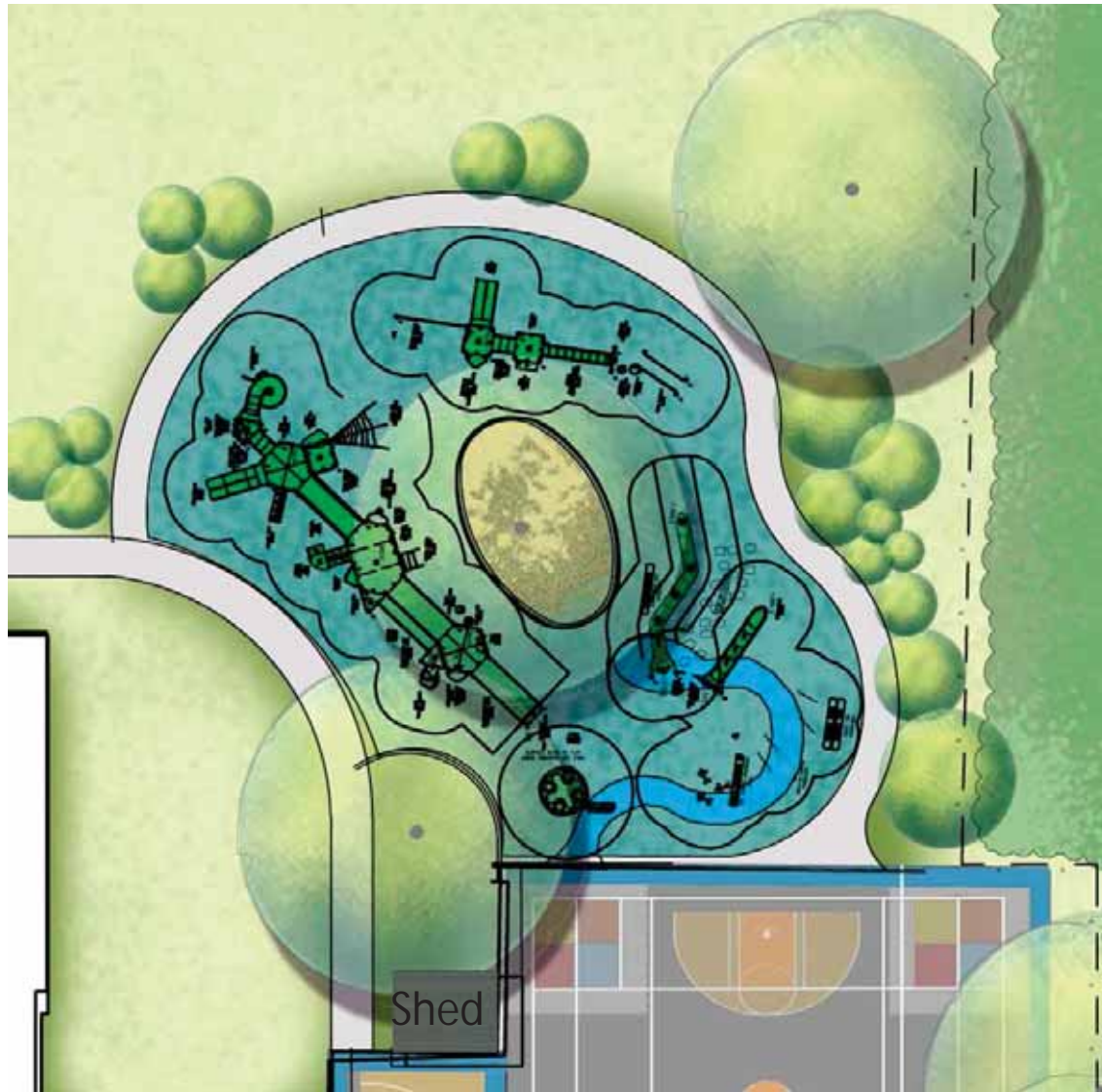
Unfortunately we do not have this much slope

West Park Playground : Examples Slopes Sites

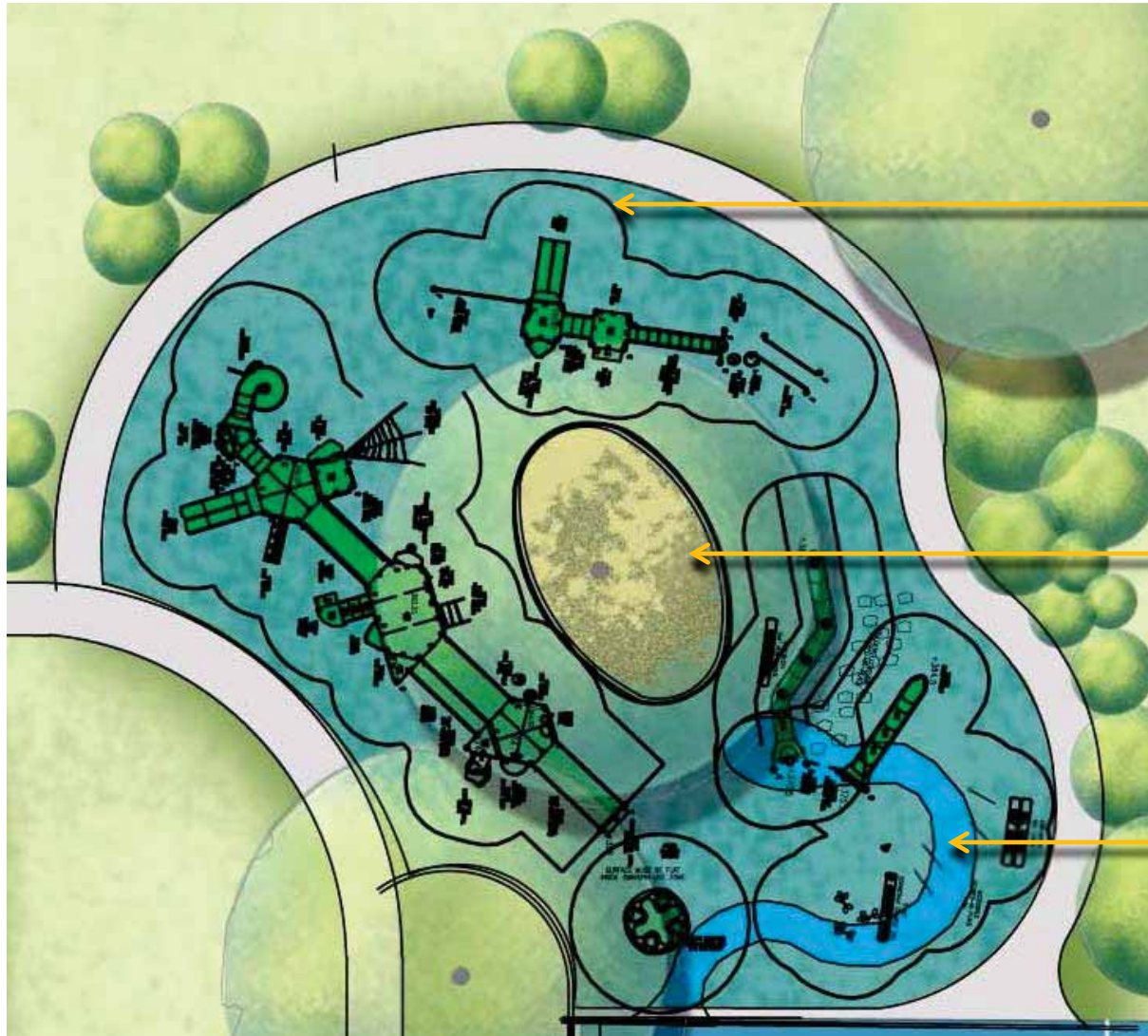


Total existing slope is 5.5 feet over entire playground

West Park Playground : Proposed Plan



West Park Playground : Proposed Plan



Fall Zone

Curb & Mulch around Tree

ADA path to slides

West Park Playground : View Looking West



West Park Playground : View Looking West



OmniSpin

West Park Playground : View Looking South East



West Park Playground : View Looking North



West Park Playground : ADA Equipment



West Park Playground : Looking North East



Colors not updated this slide

Comparison Existing and Proposed

Existing Playground Area – 3,310 S.F.

Proposed Playground Area – 5,600 S.F.

Issues: Drainage and Erosion



Erosion could be prevented by adding a fence around this space and timbers from Astor across slope and planting but it is outside of the scope

Issues: Drainage and Erosion



Erosion could be prevented by adding a fence around this space and timbers from Astor across slope and planting but it is outside of the scope

Potential Deck - Tree Protection Not included in the Budget



Tree Protection, Central Feature, Stage, Gathering Place

Potential Deck - Tree Protection Not included in the Budget



Tree Protection, Central Feature, Stage, Gathering Place

Something to think about in the Long Term : Exhibit Wetlands



Consider adding a wetland for stormwater
and to provide a landscape exhibit for the kids
And habitat for birds and Insects

WE HAVE BEEN TRYING TO ISOLATE OURSELVES
FROM NATURE FOR MILLENIA.....

AND WE HAVE ALMOST TOTALLY SUCCEEDED

West Park Discovery Area : Site Proposed Discovery Area



West Park Discovery Area : Site Proposed Discovery Area



West Park Discovery Area : Drainage Issues



West Park Discovery Area : Drainage Issues

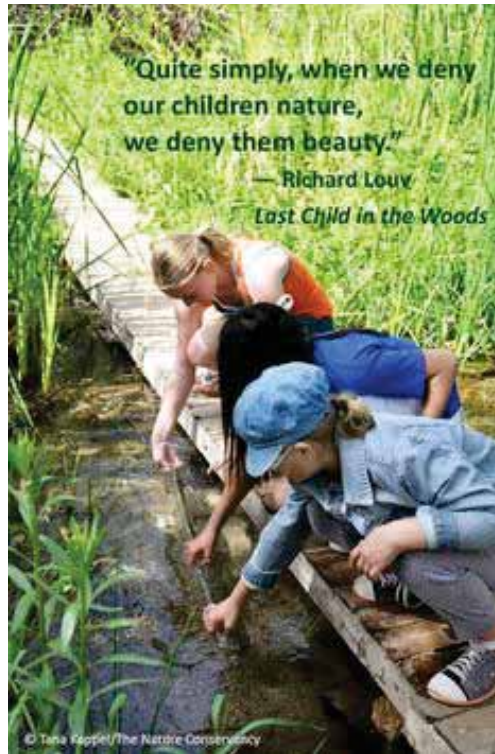
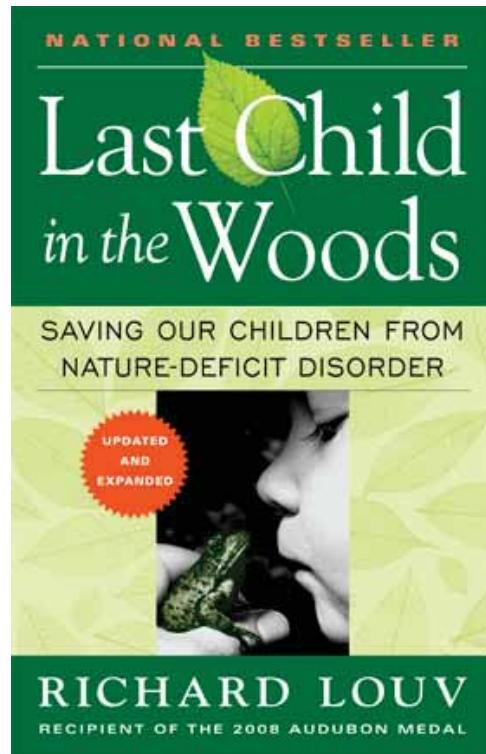
Water in carpark flows north
And ponds in NE corner

Site drains towards future Discovery Area



Old Playground was removed, site is slightly below surrounding grade, water ponds

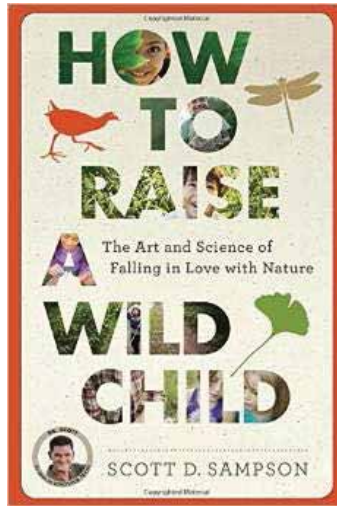
Unstructured Outdoor Recreation: Why is it important



National Movement 2006

No Child Left Inside® is a promise to introduce children to the wonders of nature – for their own health and well-being, for the future of environmental conservation, and for the preservation of the beauty, character and community."

“For young children, it's mostly about unstructured play.”



Today Scott Sampson of Dinosaur Train and Curator at Denver Museum of Nature

“Research shows that free play is critical for brain growth, body growth, and emotional growth. The outdoors provides this multi-sensory smorgasbord of opportunities to engage, not just on a computer screen, but through sight, sound, touch, and smell.”

“But you have to let your kids get messy.”



WHY CAN'T OUR KIDS HAVE SOMETHING LIKE THIS?



Inspiration



Curving Paths, Mounds, Lots of Trees, Keep Fallen Trees, add Boulders

Inspiration



West Park Discovery Area: What is it?



Coonley School



Mills Park

The Discovery Area will be a bright, welcoming area, sized for young children, where they can explore and interact with the world around them. It is comprised of natural materials: mounds, nooks, wooden steppers, seats/tables, boulders and logs to climb, and tree trunks that will slowly decompose introducing children to the transformational force of entropy.

West Park Discovery Area: What is it?

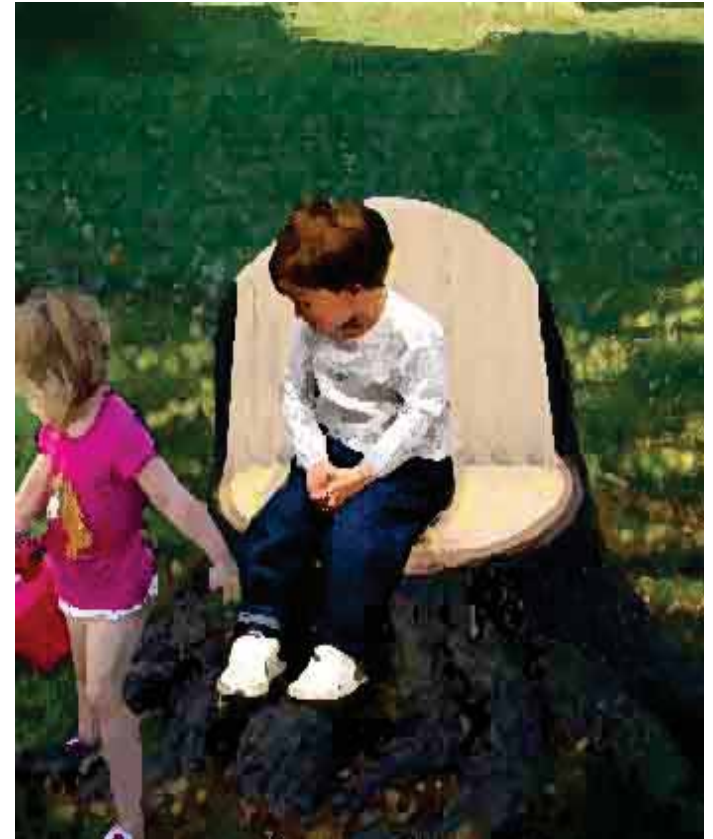


Mills Park

West Park Discovery Area : Elements

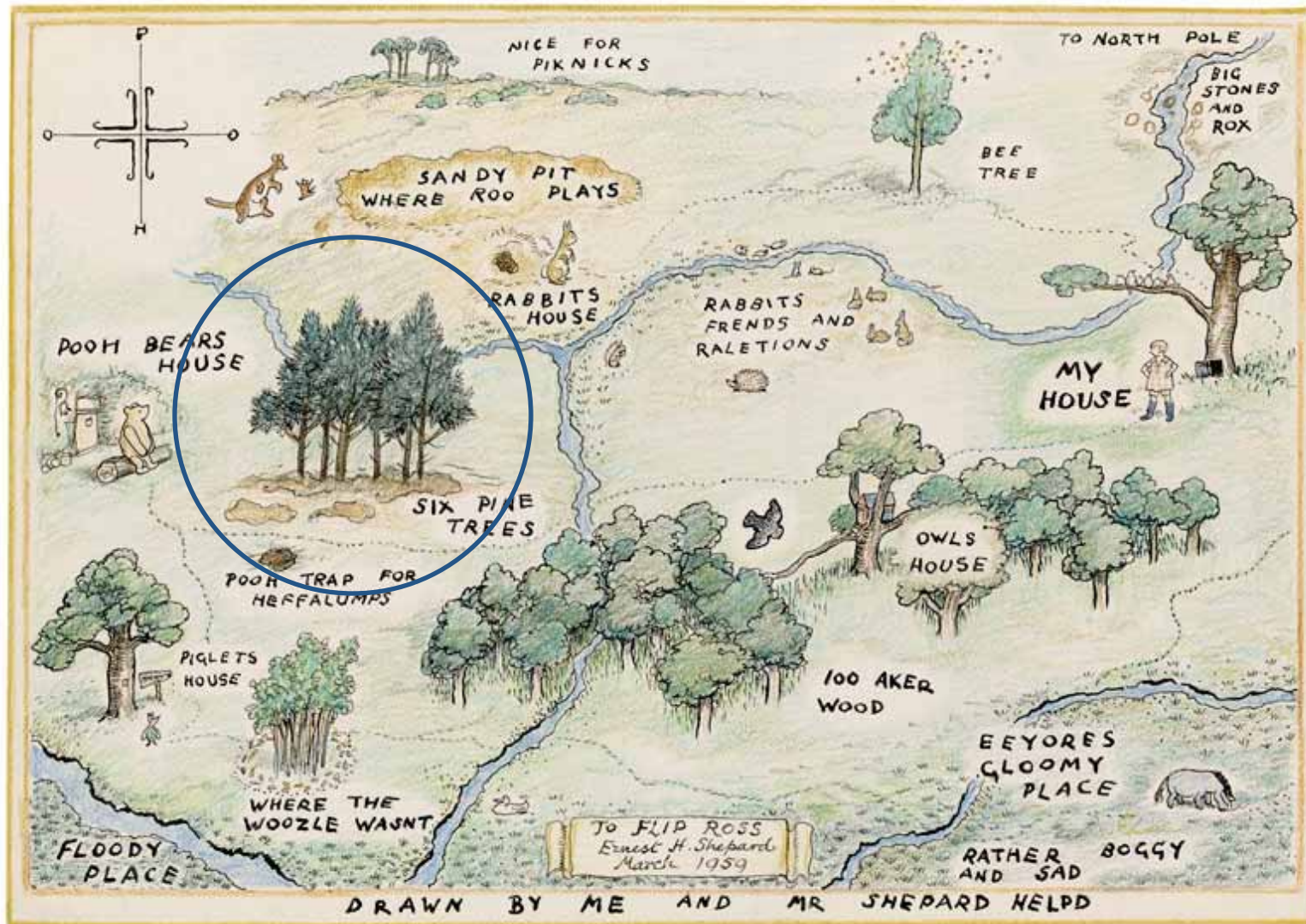


Conservatory Garden Oak Park



Tree Seat Mills Park Oak Park

And Think Like a Child: Create a Landscape Narrative



And Think Like a Child. Create a Landscape Narrative

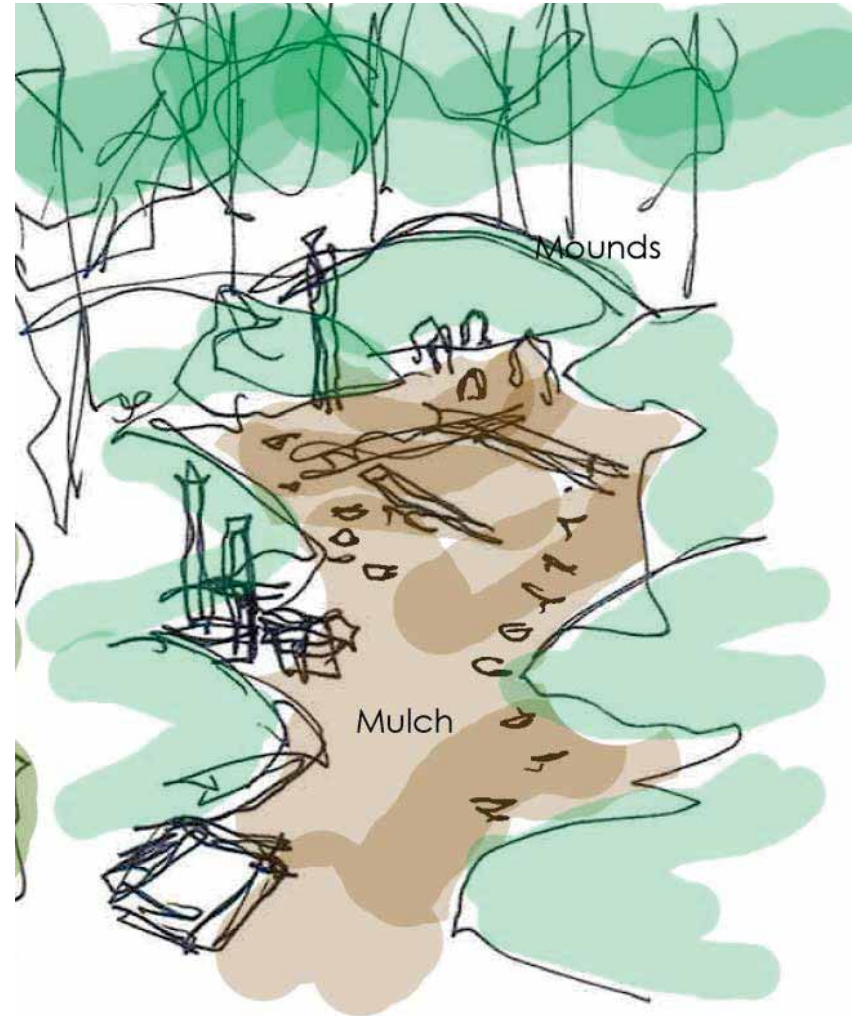


Berms and Distinctive Planting

West Park Discovery Area : Form



Plan view

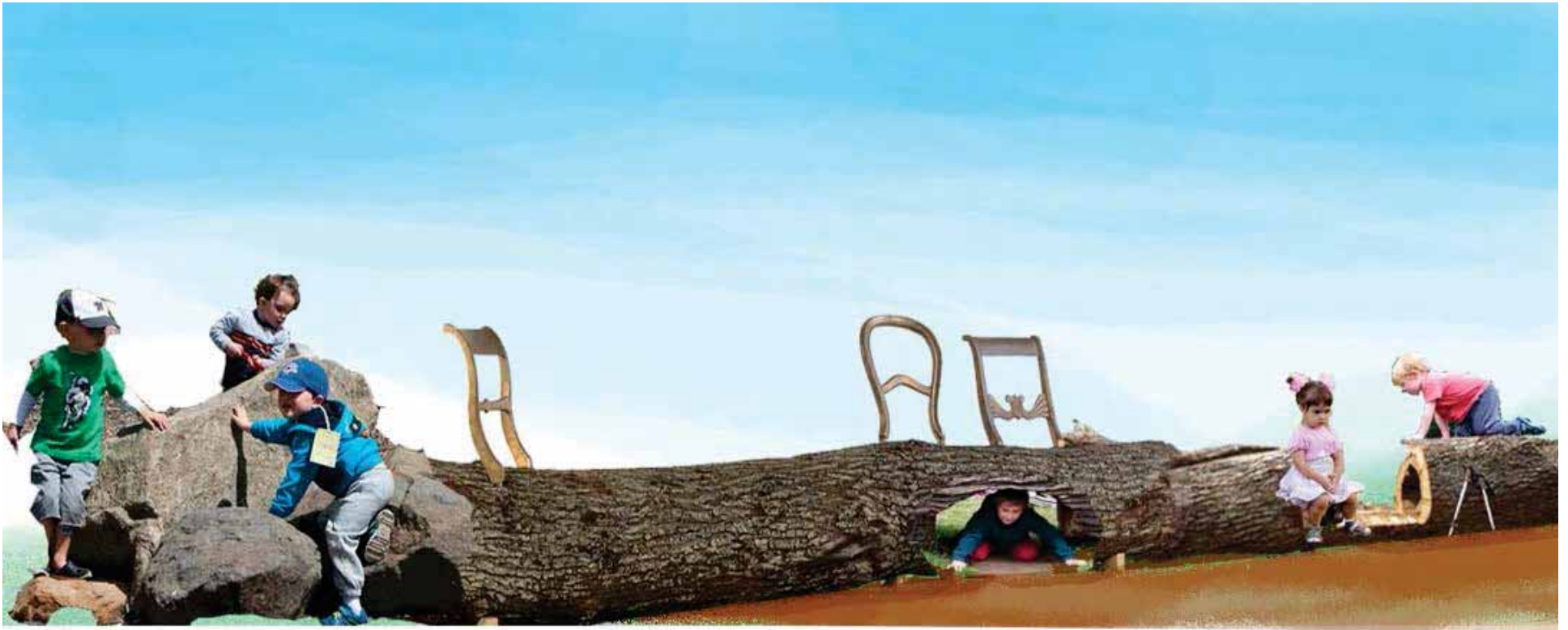


Using all excavated material on-site

West Park Discovery Area : Elements



West Park Discovery Area : Elements



Boulders

Tree Trunks

Cut into tunnels, seats and a drum

West Park Discovery Area : Elements



West Park Discovery Area : Elements





Boulders with Petroglyphs

If We Get More Ambitious



Seating and Art Pieces Perhaps over Time

If We Get More Ambitious



Seating and Art Pieces Perhaps over Time

Astor Park Playground Renovation



Astor Park Playground Renovation



Astor Park Playground Renovation



Astor Park Playground Renovation Option 2



Astor Park Playground Renovation Option 2



We will ensure the equipment doesn't make too much noise

Astor Park Playground Renovation Option 4



Astor Park Playground Renovation Option 4



Astor Park Playground Renovation Option 2 and 4



landscape architecture + urban design + planning





