

APPROVED

MINUTES OF APRIL 18, 2017 SPECIAL PROJECTS AND FACILITIES COMMITTEE
MEETING
GLENCOE PARK DISTRICT
999 GREEN BAY ROAD, GLENCOE, ILLINOIS 60022

The meeting was called to order at 6:03 p.m. and roll was called.

Committee Members present:

Andre Lerman, Chair/Commissioner
Steve Gaines, President
Lisa Brooks, Treasurer

Staff present:

Lisa Sheppard, Executive Director/Secretary
Chris Leiner, Director of Parks/Maintenance
Mike Lushniak, Director of Recreation/Facilities
Carol Mensinger, Director of Finance/HR

Commissioners present:

Dudley Onderdonk, Commissioner
Seth Palatnik, Commissioner

Members of the Public in attendance who signed in or spoke: Stefanie Boron, Dan Dorfman, Josh Lutton

Review of Designs of Lakefront Park: Josephine Bellalta and John McManus gave a presentation reviewing the designs for Lakefront Park, which is attached to these minutes and located on our website in the meeting packet under transparency portal. Discussion ensued.

Chair Lerman, based on the discussion by the Committee, directed Park District staff to schedule additional committee meetings for discussion on the Lake Front Park plan prior to brining any direction back to AltaManu. Chair Lerman, based on the discussion by the Committee, also directed staff to begin the process of contracting with a Civil Engineer to complete Geo-Tech evaluation of the bluff.

Matters from the Public: There were no matters from the public.

Other Business: Executive Director Sheppard setup a Special Projects and Facilities Committee meeting at on May 16 at 6:00pm to discuss Takiff parking.

Adjourn: President Gaines moved to adjourn the meeting at 7:05 p.m. Commissioner Brooks seconded the motion, which passed by unanimous voice vote.

Respectfully submitted,

Lisa M. Sheppard
Secretary



LAKEFRONT PARK

April 6th, 2017



March 2nd Meeting

- **Looked at History of the Park**
- **Local/Regional**
- **Brief Analysis of the Park and Existing Conditions**
- **Potential Projects that Should/Must Take Place**

**Most Important: We listened to Your Ideas
You had many and you Stated that:
The Park was for “All of Glencoe”**

These were the Potential Projects at that time



However this was what you asked us to Examine

Multi-Use Tennis/Pickle Ball Two Courts (2)

Removal and replanning park with 1 Tennis Court removed

Fitness Components (Not large enough to create regional draw)

Potential of small natural looking fitness elements a possibility

Playground Concepts

- Dedicated Traditional 2-5 with swing similar size and scope to what's there

- Natural Material Concepts (Something Different than Discovery Area)

Drainage Improvements

Park Entry Concepts (How do we invite people in at the corners?)

Use Glencoe Limestone?

Interpretive Signage/Elements

- Stone Stepper Pathway like Mills with history of Glencoe etc?

- Signage Describing Plantings/Birds/Lakefront Ecosystem

Interior Park Pathways/Bluff Pathway

ADA Accessible Pathway

Concrete - Alternate Materials that are maintainable 365 and ADA Compliant?

Park Benches & Swing Benches

Curved Exterior Pathways to replace straight sidewalks

Bike Racks, Drinking Fountain (relocation?)

Donor Paver Area/Plaza Natural Plantings (Be Conservative)

Lakefront Deck

Examine potential opening up of spaces for tree quality

Tonight

- **The Landscape Aesthetic of Lakefront Park**
Uncovering and enhancing the “Spirit of Place”
- **Historic Importance of the Park (again)**
- **Barriers in the Landscape**
- **Proposals: From the ideal to moderate intervention**
- **Drainage**
- **A look at Potential Materials**
- **Potential Costs**

The Landscape Aesthetic of Lakefront Park

Lakefront Park: Naturalesque Tradition/English Landscape Style



Lakefront Park: Naturalesque Tradition

Beautiful but completely artificial. Agricultural progression was Woodland to Farmland with Hedgerows and Trees



Lakefront Park: Naturalesque Tradition

Clearing the land: Gaelic: Fuadach nan Gàidheal, the “Eviction of the Gael”, 18th /19th Centuries

1792: known to Gaelic-speaking Highlanders as the Bliadhna nan Caorach “Year of the Sheep”



Lakefront Park: Naturalistic Tradition

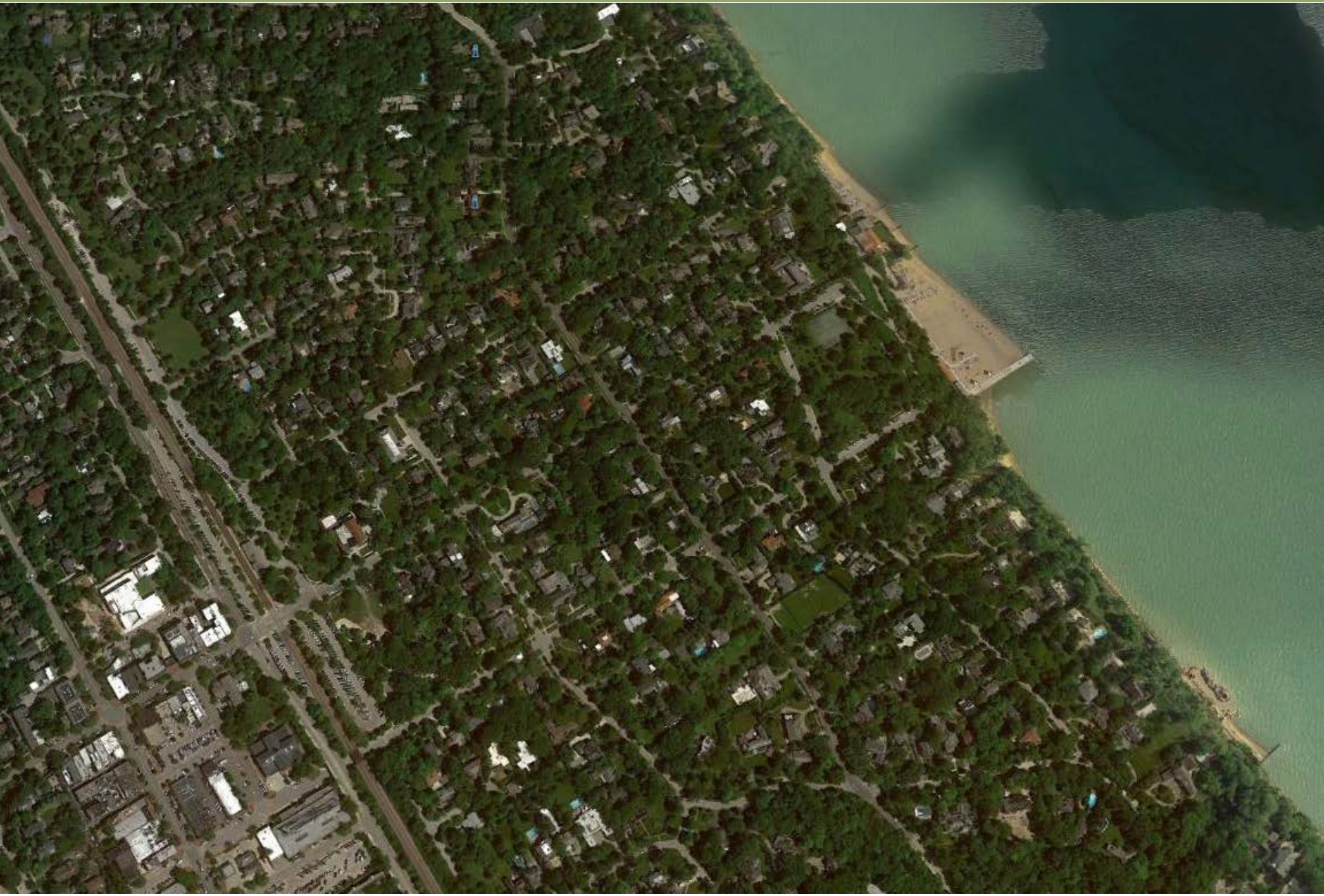


Sheep eat saplings, shrubs & grass to the nub leaving only larger mature trees & few hedgerows

Capability Brown turned it into an Exquisite Aesthetic



Lakefront Park: Importance of the Park



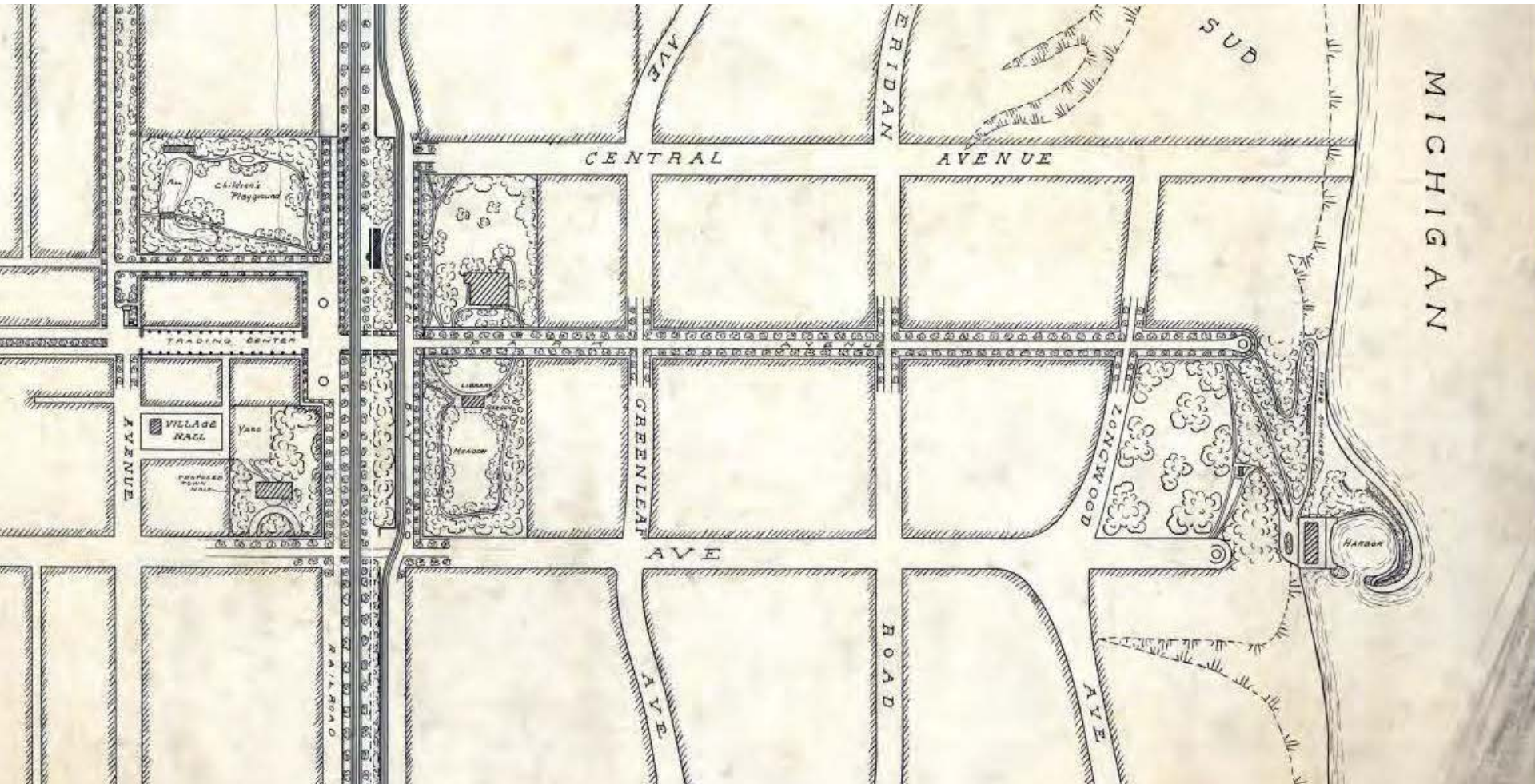
Lakefront Park: Dedicated in 1867

Historic Link : From the Beginning Train Station & Downtown
to the Park and Lakefront



Lakefront Park: Importance of the Park

Frank Lloyd Wright and Jens Jensen worked together in Glencoe



Jens Jensen 1912

The Arrival on Park is Compromised so we are showing Hazel



View from Hazel

Lakefront Park: Importance of the Park



Pre-Settlement Oaks

Lakefront Park: Importance of the Park



Lakefront Park: Importance of the Park



Glencoe's Sesquicentennial (150th birthday) in 2019



Feb. 22, 1940: Glencoe Park District workmen relocate a 60-foot elm tree from a school yard to its new home at Central School

Lakefront Park: Conflict of Styles



Lakefront Park: Conflict of Styles



Lakefront Park: Barriers in the Park

“A good park should allow you to both see and walk through it. In many new parks, I feel like a victim of planning, forced to navigate an obstacle course just to get through”.

Peter Kantz, Congress for the New Urbanism (CNU)

Lakefront Park: Barriers in the Park



“forced to navigate an obstacle course just to get through”

Lakefront Park: Barriers in the Park



“forced to navigate an obstacle course just to get through”

Lakefront Park: Barriers in the Park



“forced to navigate an obstacle course just to get through”

Lakefront Park: Barriers in the Park



Lakefront Park: Barriers in the Park



The Park is Part of Glencoe History and Pre-settlement

Public Tennis Courts National Parks & Recreation Association

The National Recreation and Park Association (NRPA)
Recommends 1 tennis court per 2,000 people

Glencoe Population 8,900 in 2014 equals 4.45 tennis courts

There are 11 Park District tennis courts in Glencoe
More than double the recommended number

Public Tennis Courts Nationally Trust for Public Land

Tennis Courts per
10,000 Residents

Tennis Courts per
1,000 Residents

Minneapolis	4.5	.45
Omaha	4.4	.44
Greensboro	4.0	.4
Atlanta	3.9	.39
Boise	3.8	.38
Madison	3.8	.38
Virginia Beach	3.6	.36

Glencoe 1.27 per 1000 Residents

Lakefront Park: Majority of Barriers



“Rain-spotting” of Trees - Potential to Open Up Spaces



THE IDEAL

Today



New Entryways, Curvilinear Paths, 0 Tennis Courts, Opening Up Spaces



Lakefront Park: ADA Compliant Path



“Shouldn’t there be some access so we can experience the trees?”

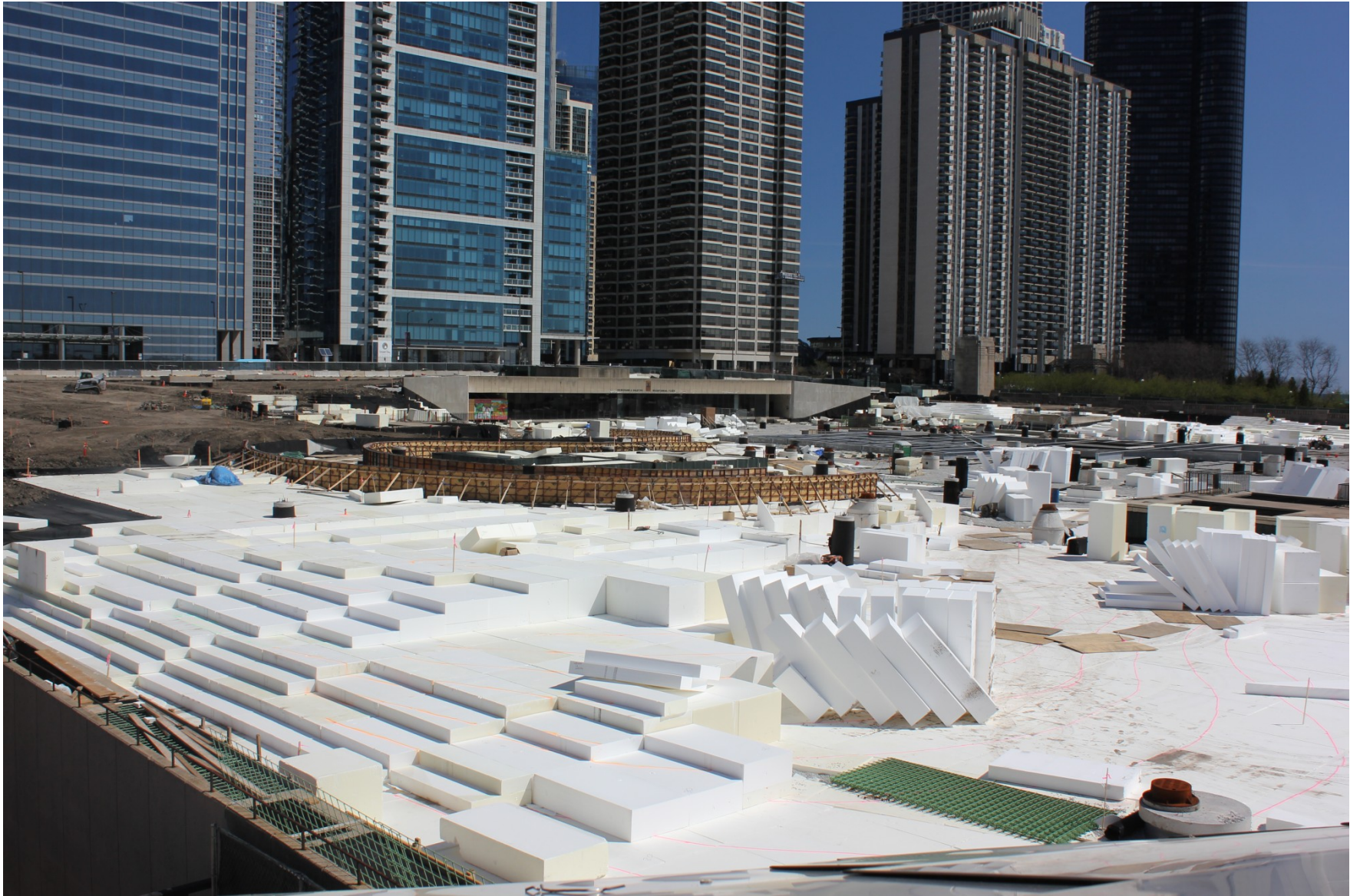
Lakefront Park: ADA Path



Instead of the Courts: Kids love Mounds



Lightweight block for Mounds



Lakefront Park: Mounds very Low and Slightly Shaped



Events in the landscape

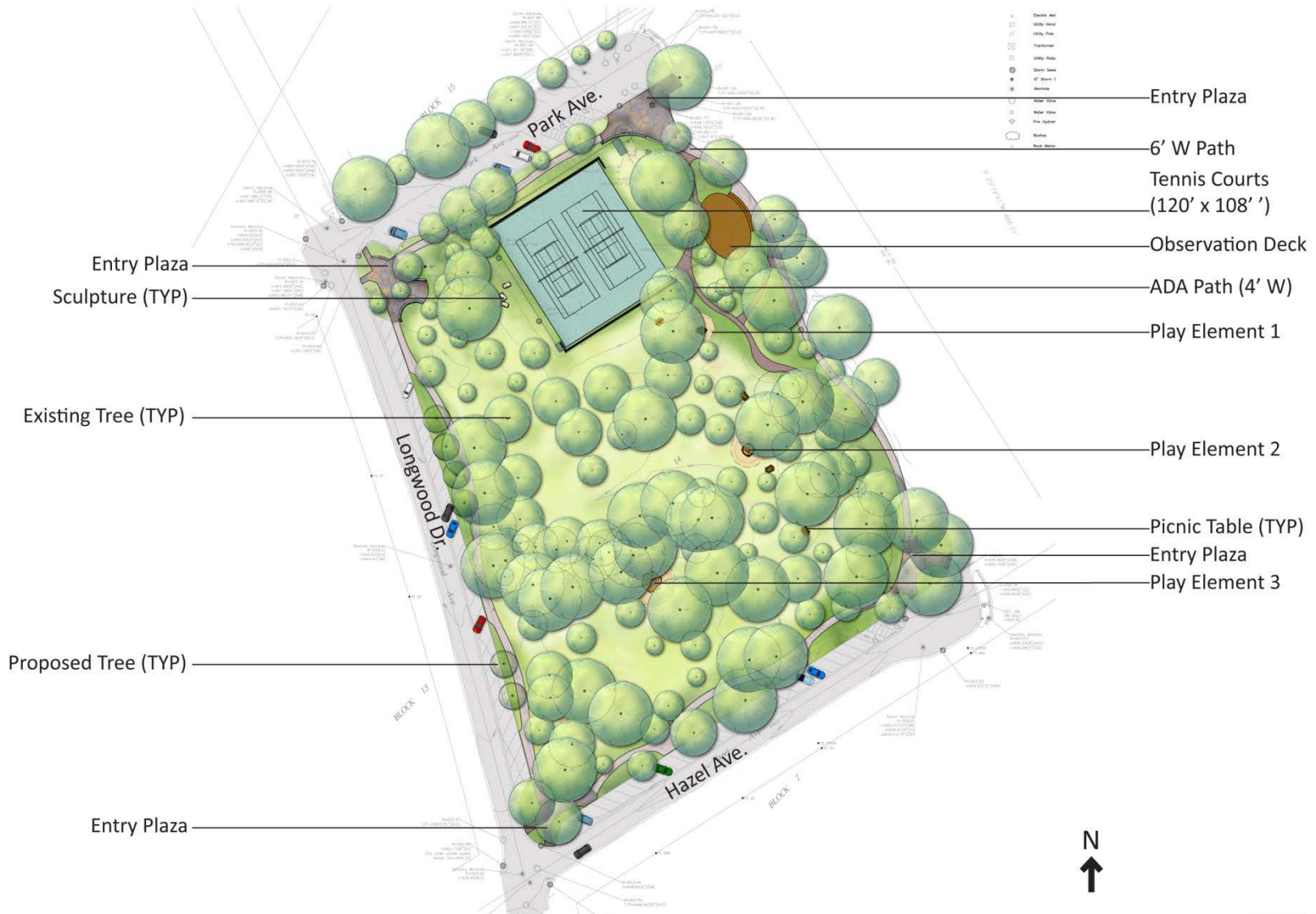


More Moderate Intervention

New Entryways, Curvilinear Paths, 2 Tennis Courts, Opening Up Spaces



Lakefront Park: Conceptual Plan A

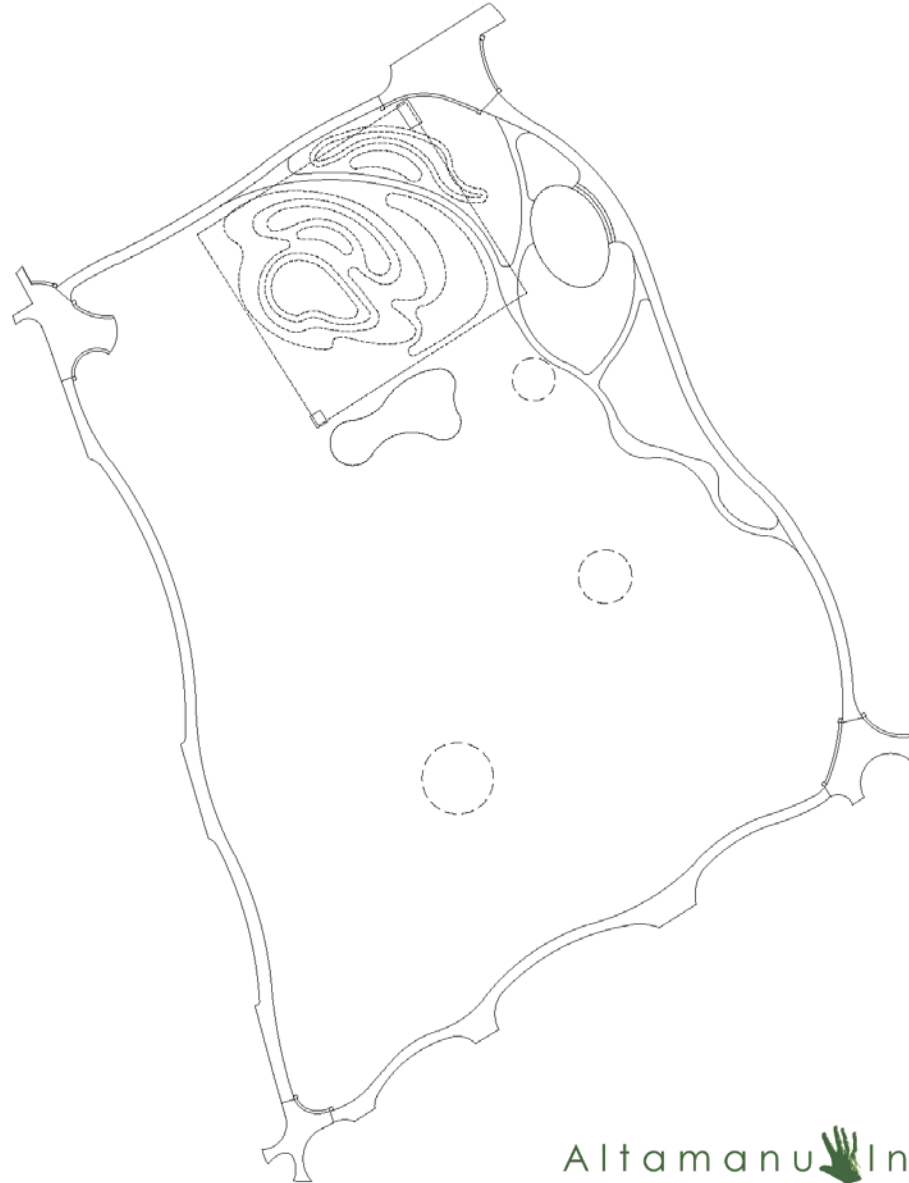


- Entry Plaza
- 6' W Path
- Tennis Courts (120' x 108')
- Observation Deck
- ADA Path (4' W)
- Play Element 1
- Play Element 2
- Picnic Table (TYP)
- Entry Plaza
- Play Element 3
- Entry Plaza
- Sculpture (TYP)
- Existing Tree (TYP)
- Proposed Tree (TYP)
- Entry Plaza

Lakefront Park: Conceptual Plan B



Lakefront Park: Pathway System



Lakefront Park: Importance of Entryways



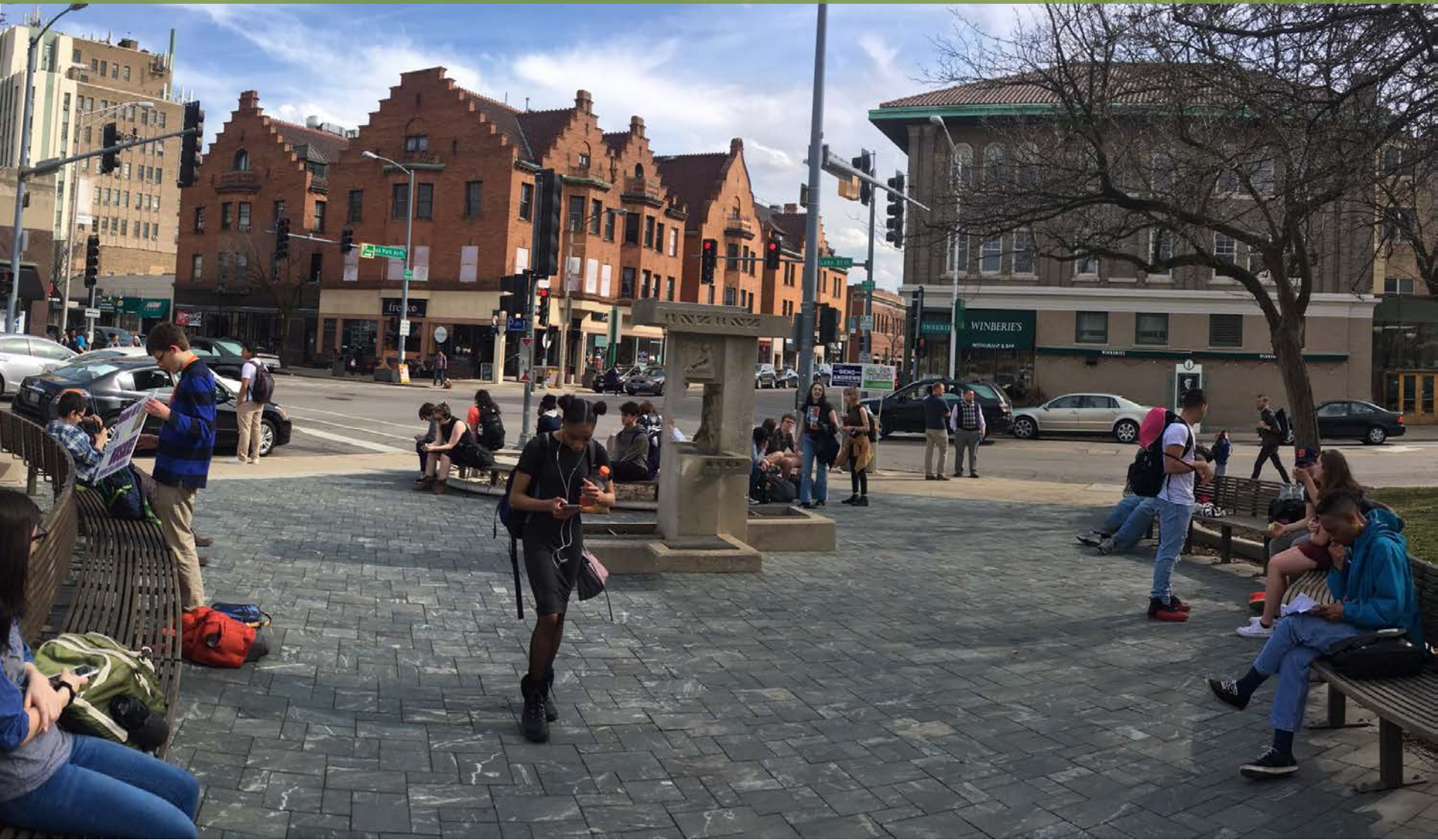
“OPEN ARMS AND ALSO A PLACE”

Altamanu  Inc.
landscape architecture + urban design + planning

SMP GROUP
Design Associates, LLC



Lakefront Park: Importance of Entryways



Open Arms of Welcome, Compression, Destination in View



Open Arms of Welcome, Compression, Destination in View



Lakefront Park: North West Entry Existing



Lakefront Park: North West Entryway Scheme 1



Lakefront Park: Donation Opportunities



Donor Opportunities in each Entry Plaza



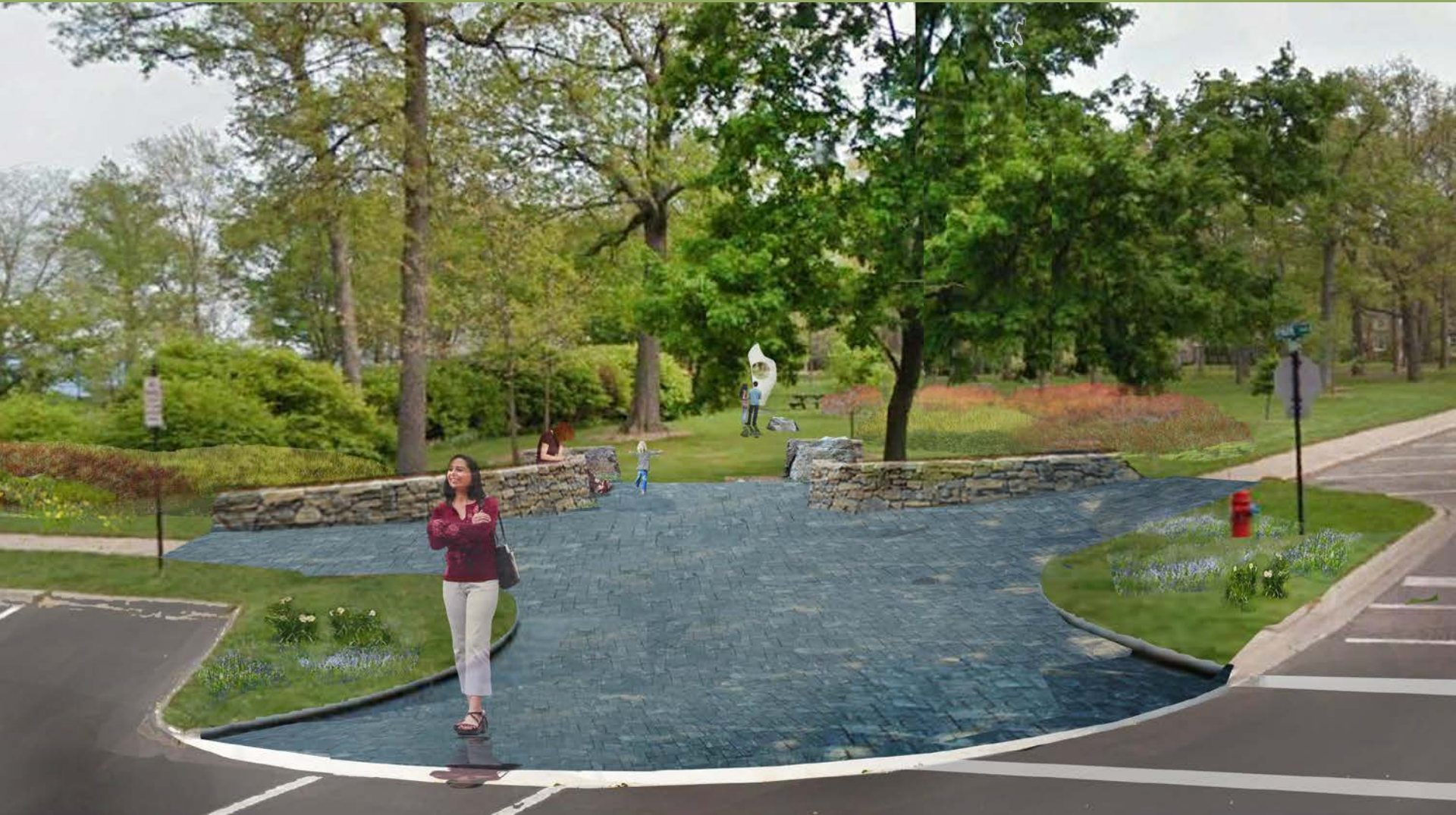
Lakefront Park: Donor Opportunity



Lakefront Park: North West Entryway Existing



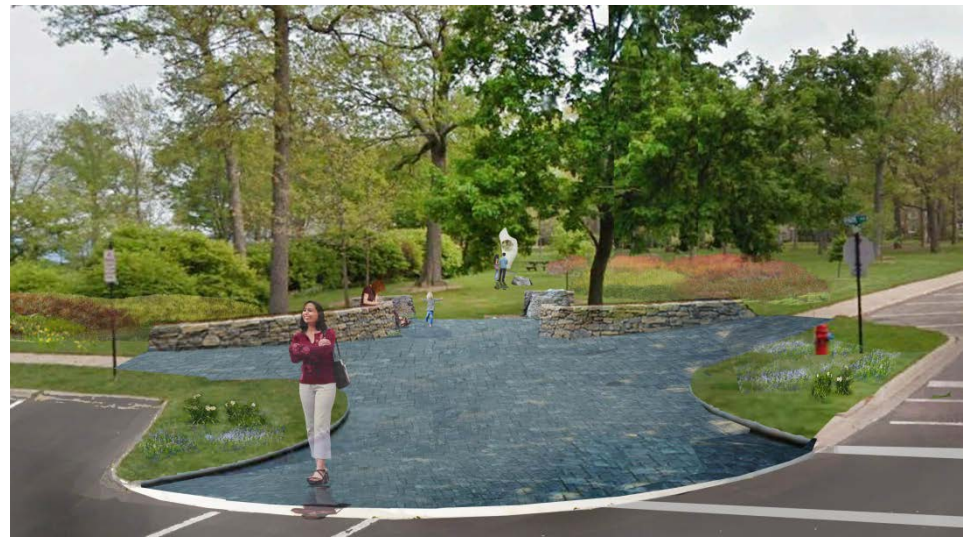
Lakefront Park: North West Entryway Scheme 2



Lakefront Park: North West Entryway



Scheme 1

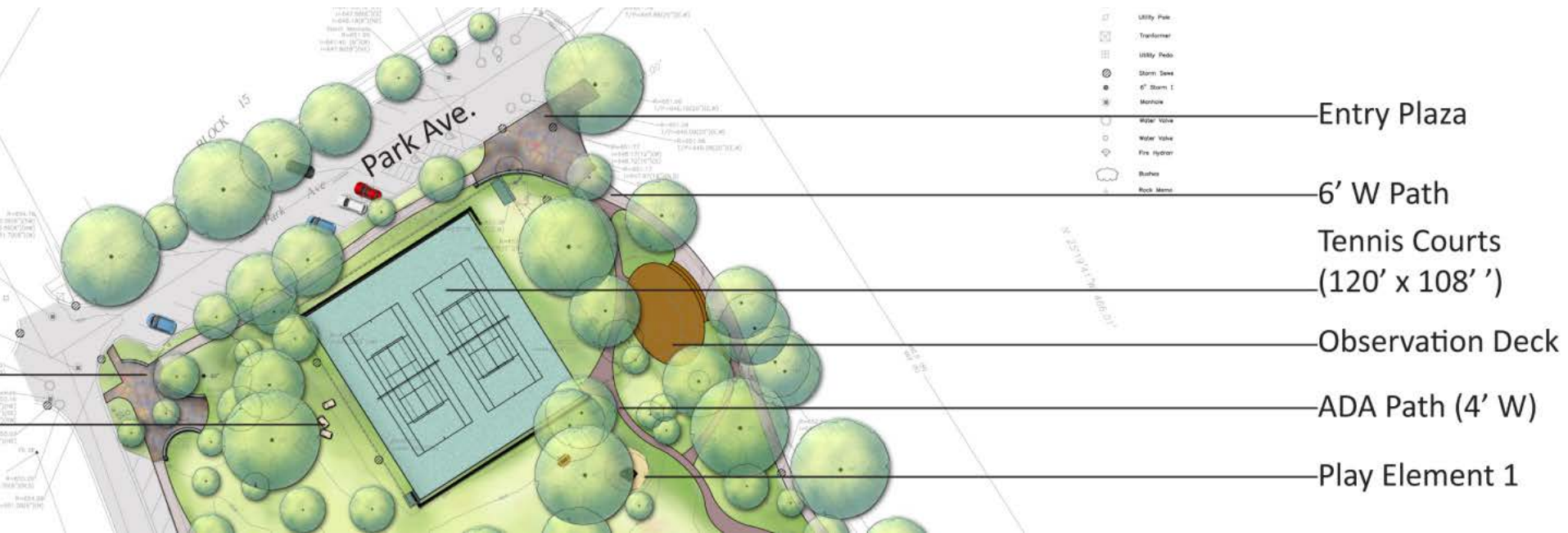


Scheme 2

Lakefront Park: North Side Existing



Lakefront Park: North Side Conceptual Plan A



Lakefront Park: North East Entry



“forced to navigate an obstacle course just to get through”

Lakefront Park: North East Entry



Open Arms and a Place

Lakefront Park: North East Entry



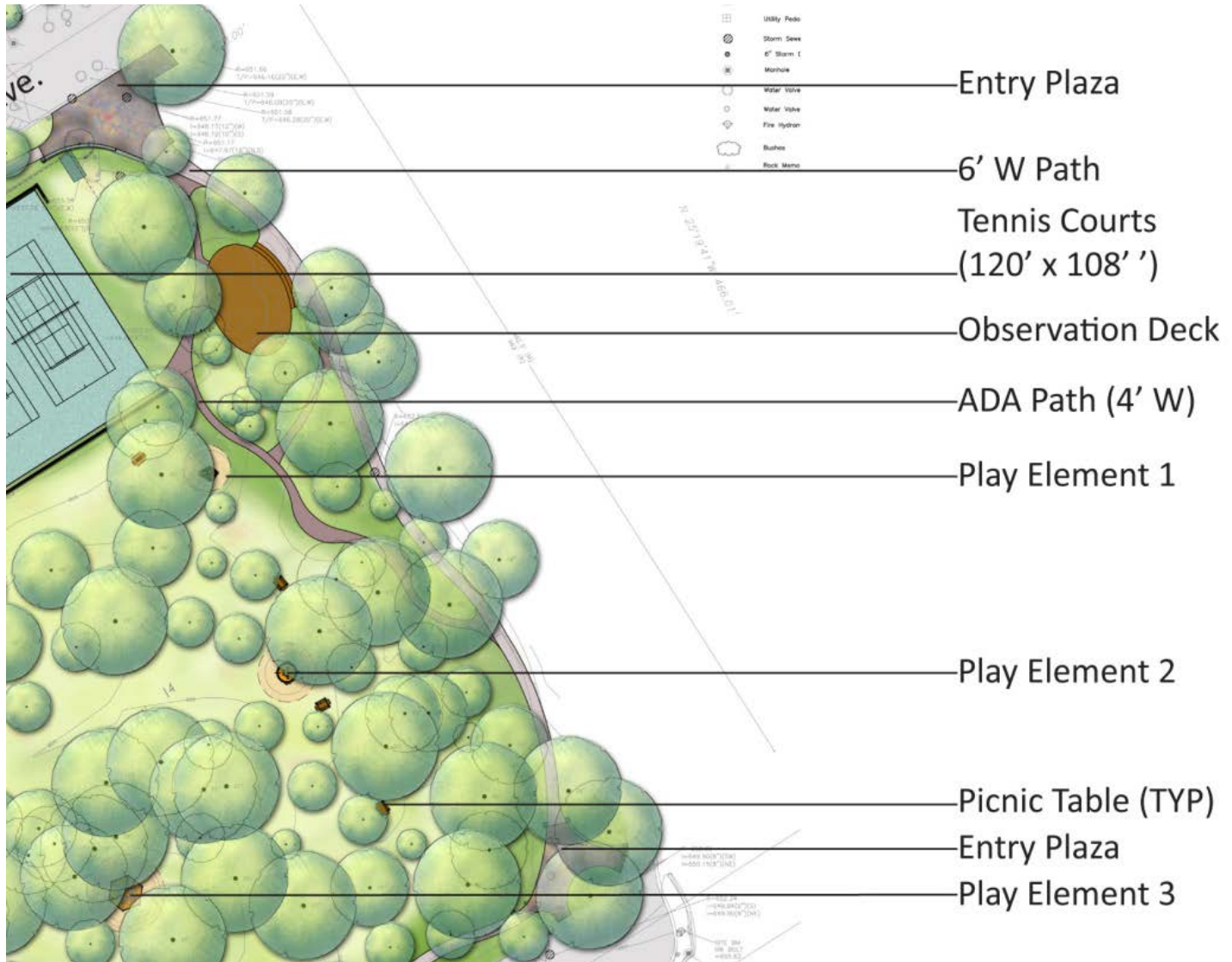
Lakefront Park: Sign and Plaque



Lakefront Park: North East Entry



Lakefront Park: East Side Lakefront Path



Lakefront Park: Pull Path Back from Edge



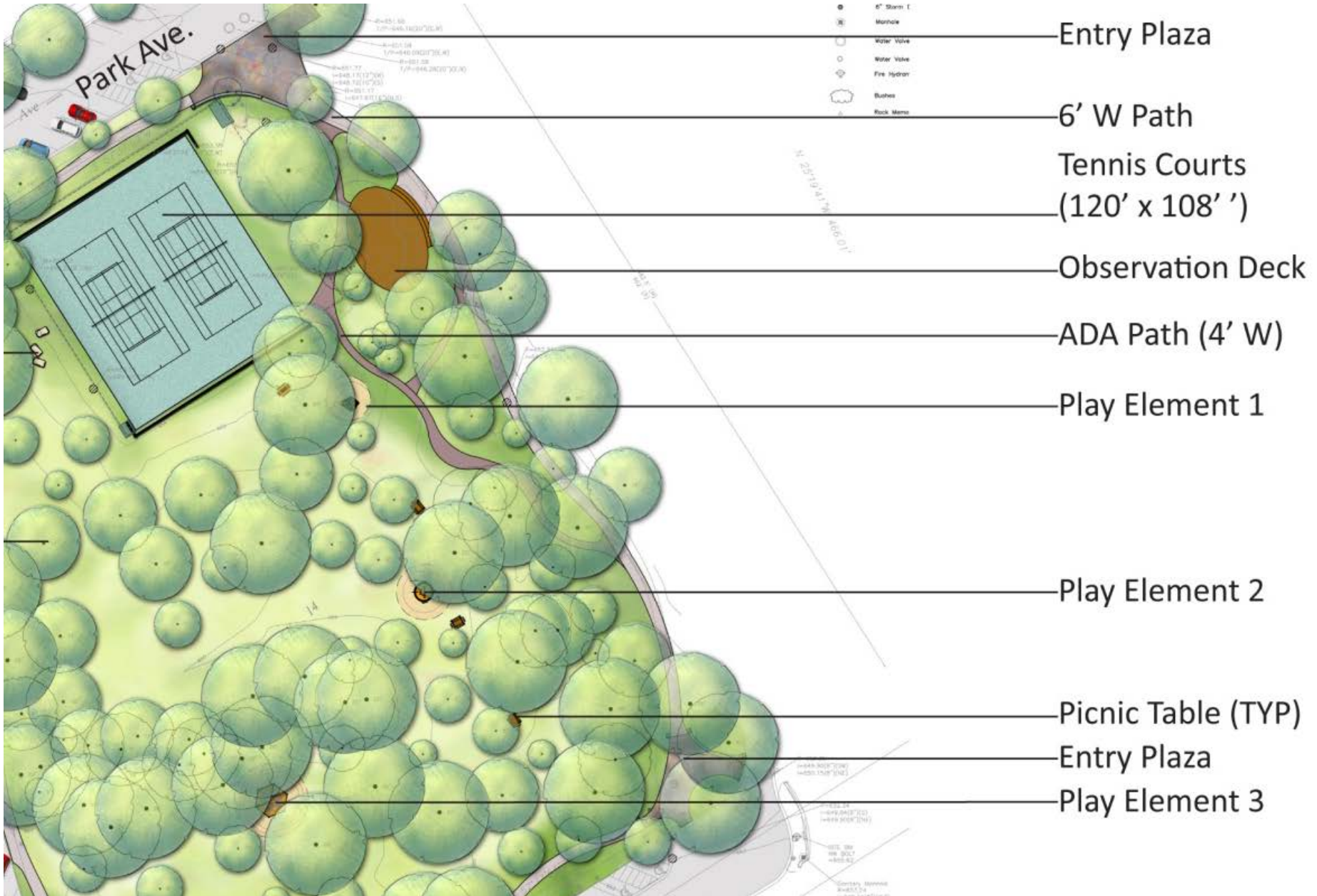
Lakefront Park: Deck Composite Material and Stone Edge



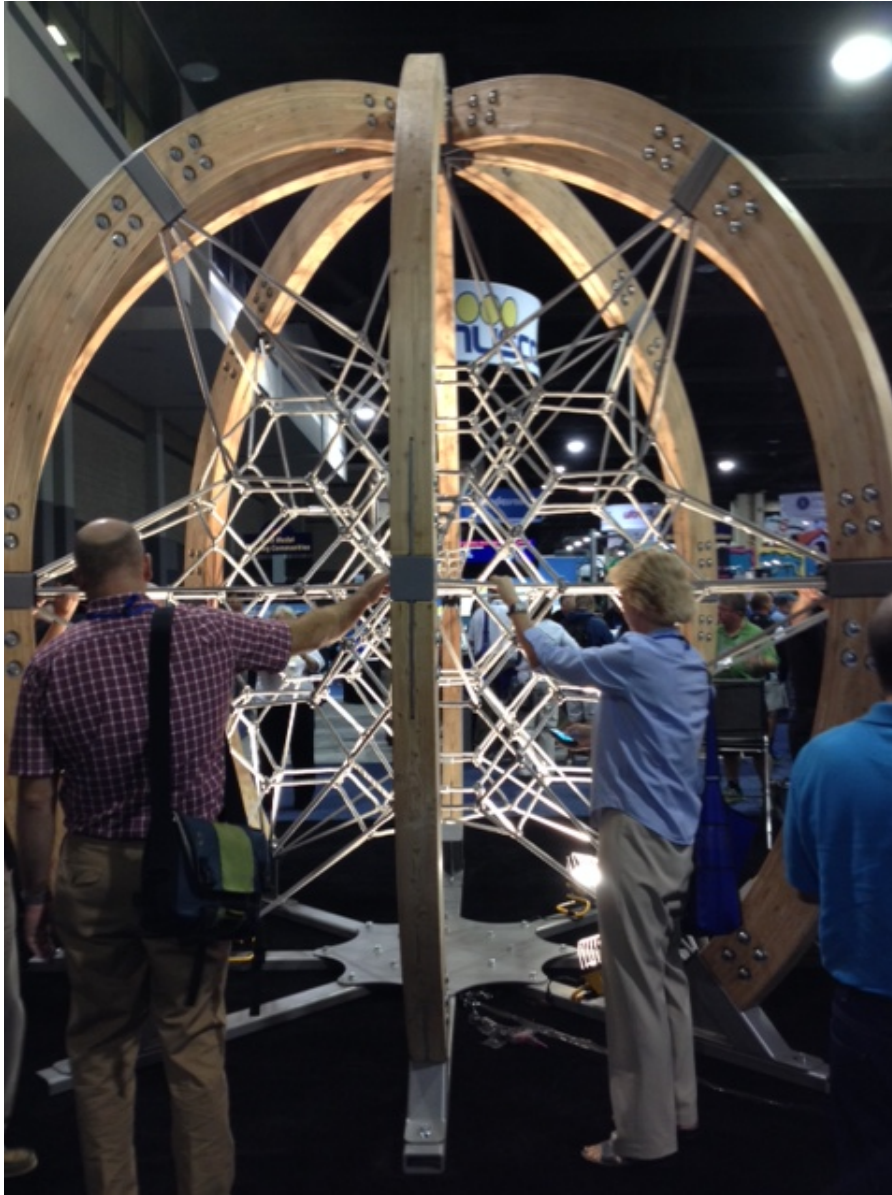
Lakefront Park: Mini Decks



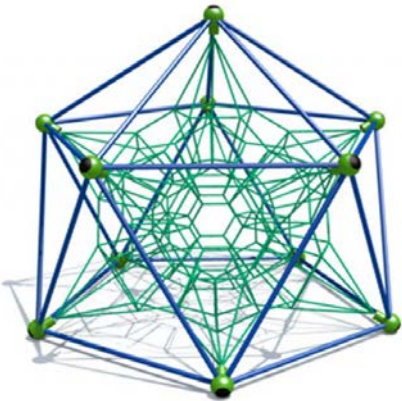
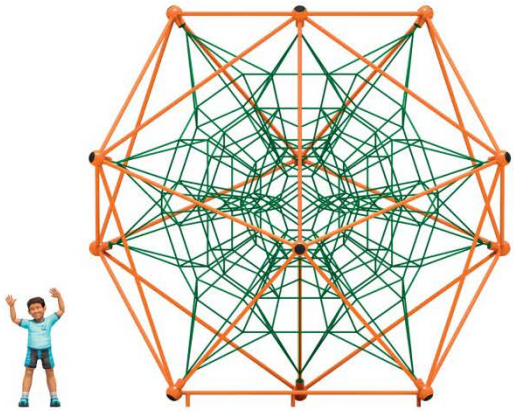
Lakefront Park: Play Elements in the Landscape



Lakefront Park: Play Elements



Lakefront Park: Sculptural Play Elements in the Landscape

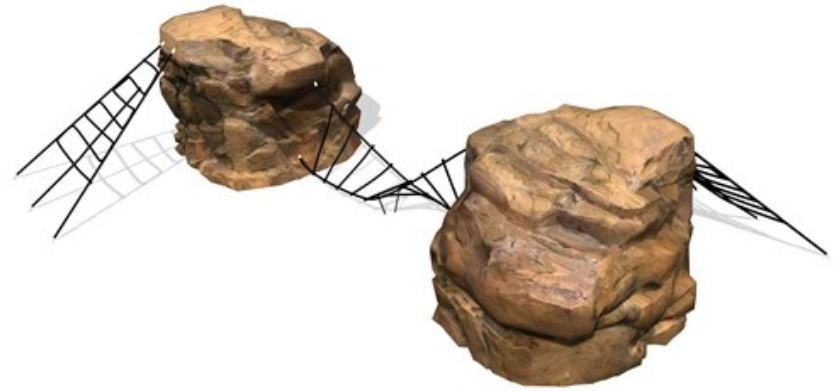


LARGE PLAYWEB (PLAYWORLD)

Lakefront Park: Sculptural Play Elements in the Landscape



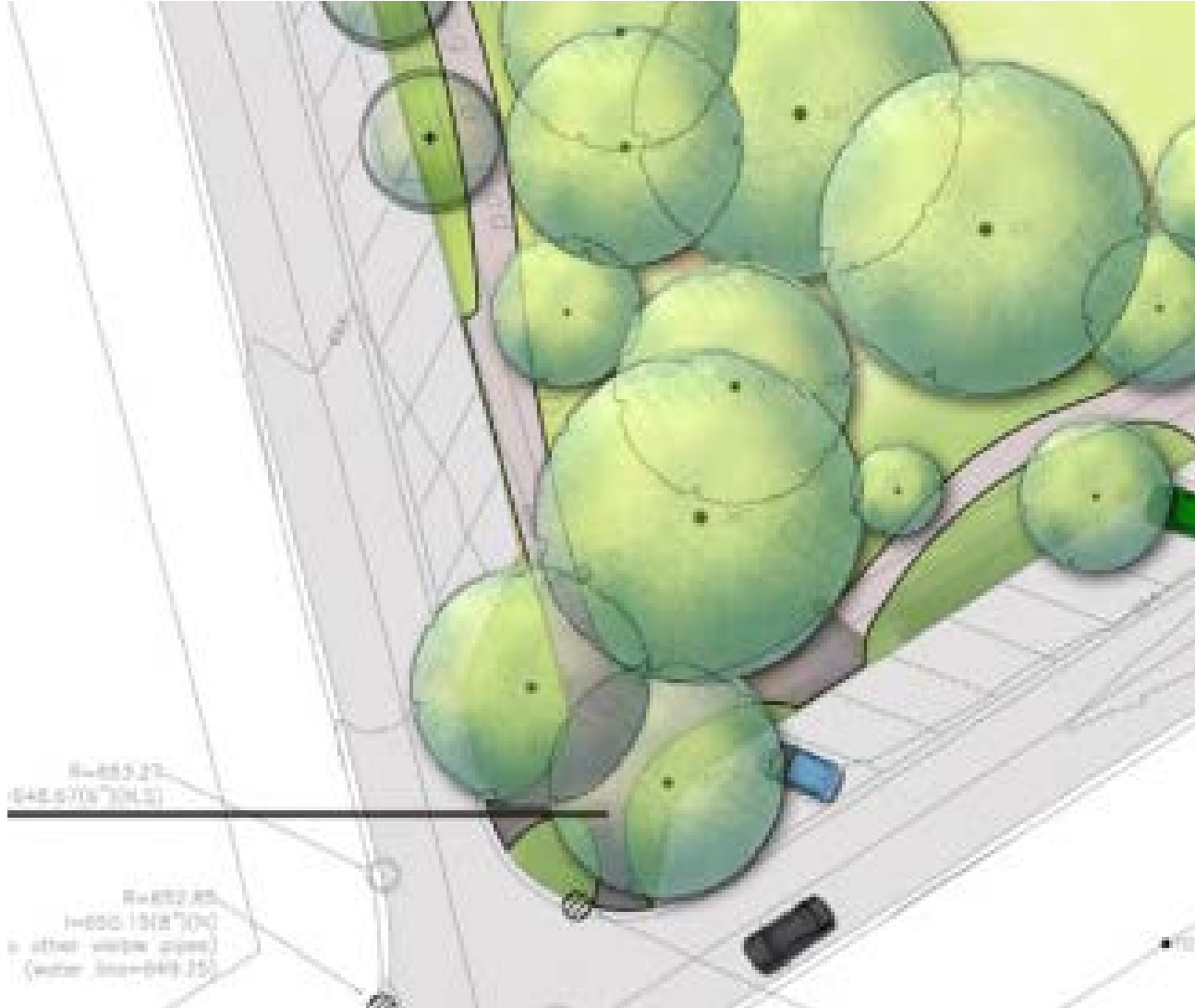
Lakefront Park: Play (Nature Based)



Lakefront Park: Or more regular Playground 2 - 5



Lakefront Park: South West Entry



Lakefront Park: South West Entry



Lakefront Park: South West Entry



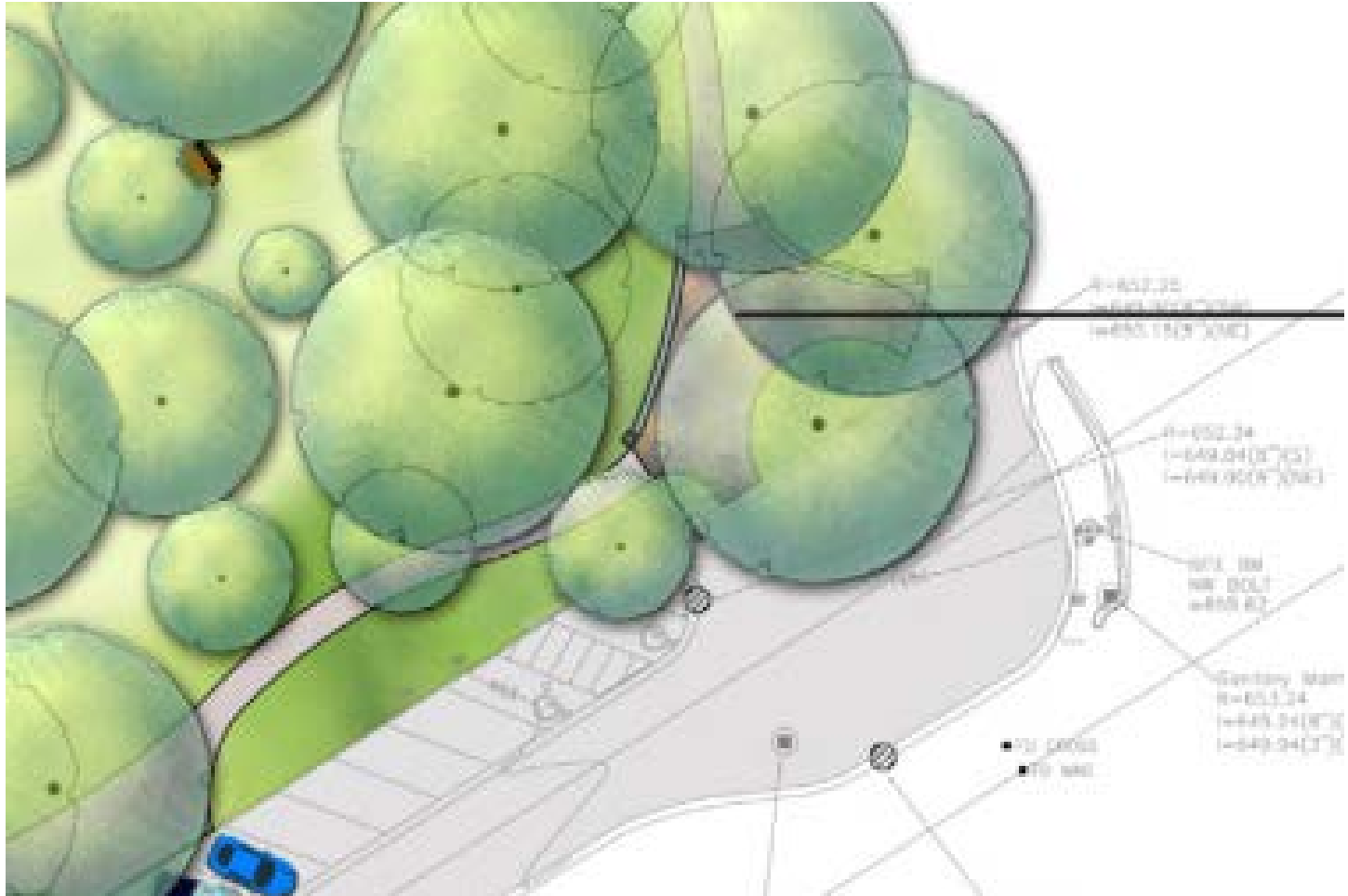
Lakefront Park: South West Entry



Lakefront Park: South West Entry



Lakefront Park: South East Entry



Lakefront Park: South East Entry



Water Flows Across Paths in Park and Along Hazel Ave

Lakefront Park: South East Entry



Lakefront Park: South East Entry

Deal with drainage, make a pleasing entry/exit to the path system and make a "Place"



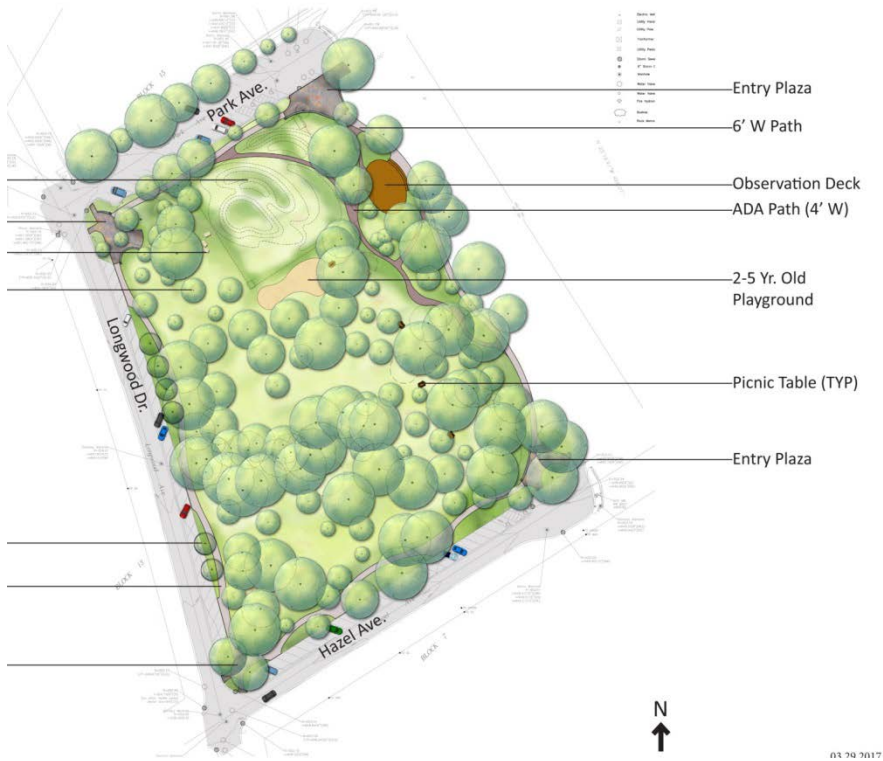
Lakefront Park: South East Entryway



Lakefront Park: South East Entryway



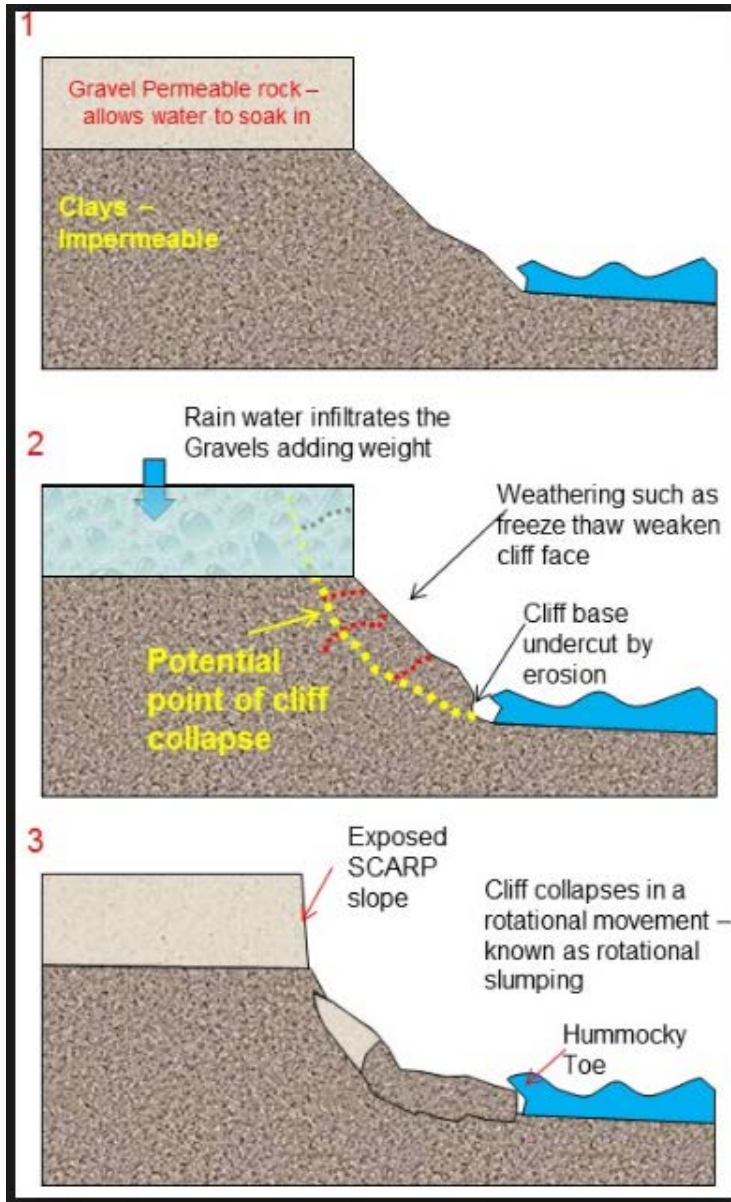
Lakefront Park: Conceptual Plans A & B



Lakefront Park: Drainage



Lakefront Park: Drainage



Lakefront Park: Engineering Recommendation

- Reinforce the toe of the bluff and to add wick-drains
- Wick-drains carry water from the top directly to the bottom
- Relieve water pressure acting on the face of the bluff
- Reinforce the toe of the bluff to stop the bluff from sliding
- Improve existing storm sewers; help carry water away from the bluff
- Limit infiltration.

Lakefront Park: Interpretive Signage



Lakefront Park: Interpretive Signage



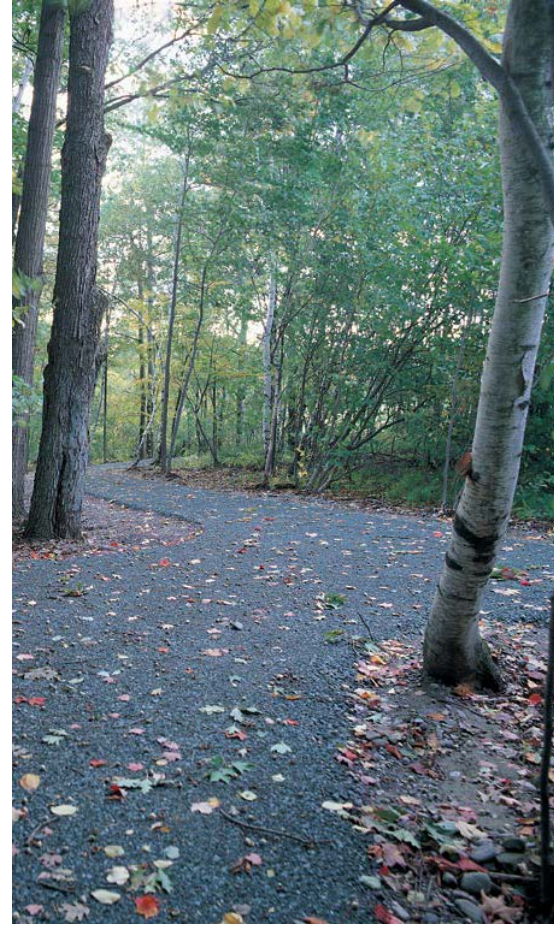
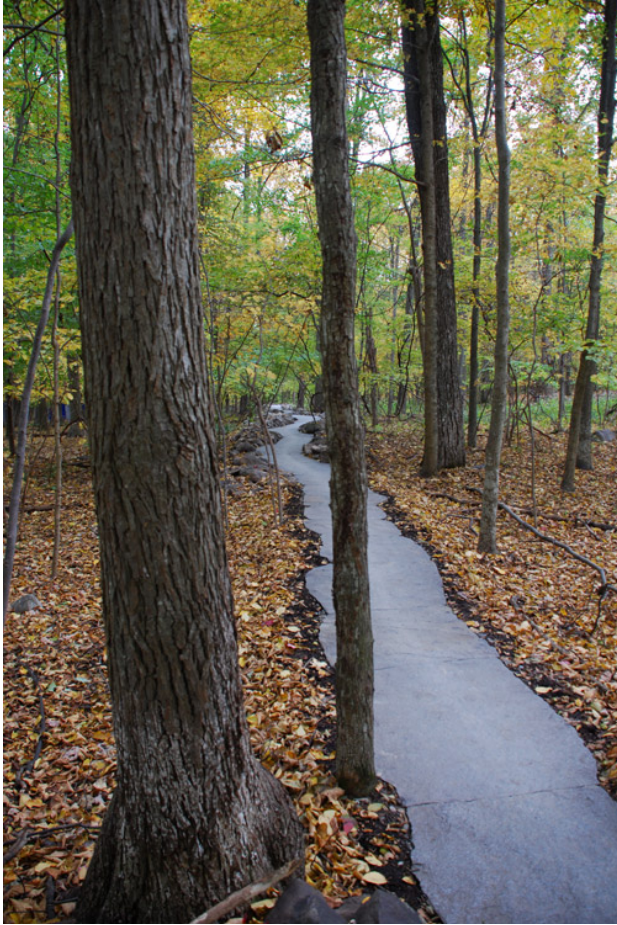
Lakefront Park: Winter Color and Form



Lakefront Park: Butterfly Station



Lakefront Park: Pathway Materials



Lakefront Park: Pathway Materials

ROMPOX® - PROFI-DEKO



The professional grit and gravel hardener

2 component synthetic resin binding agent
for washed, dried and dustfree gravel and grit (grainsize from approx. 2-10mm)¹⁾



PROPERTIES

- for pedestrian loads
- for joint depths from 30mm
- highly water permeable
- ideal for pathway construction and tree pits
- water resistant
- for professional use
- strengthens gravel and grit (grainsize from approx. 2-10mm)¹⁾ (not suitable for white stones)
- high strength
- can be applied from > 0°C surface temperature

Colour: transparent

ROMEX®
Professional Gravel Hardener

CELL-TEK
Geosynthetics

ORDERS / INFO CALL
410-721-4844



LSG SERIES | GRAVEL-LOK | PRODUCTS | CAD / DATA SHEETS | VISUAL | DEALERS | CONTACT | MORE

Gravel-Lok™ Natural Pebbles

For your convenience, we also offer clean, washed pebbles for use with Gravel-Lok.

Call or e-mail for more information.
NOTE: Natural stone color varies by lot.



PEBBLE STYLE: YORKTOWN
SIZE: 1/8" or 3/8" PEA
GRAVEL-LOK CLEARBOND



PEBBLE STYLE: ROCKLEDGE
SIZE: 1/8" or 3/8" RIVERLACK
GRAVEL-LOK CLEARBOND

Lakefront Park



