

MINUTES OF JANUARY 9, 2024 REGULAR BOARD MEETING  
GLENCOE PARK DISTRICT  
999 GREEN BAY ROAD, GLENCOE, ILLINOIS 60022

The meeting was called to order at 7:00pm and roll was called.

Commissioners present:

Carol Spain, President  
Stefanie Boron, Vice President  
Michael Covey, Treasurer  
Bart Schneider, Commissioner  
Jordan Spector, Commissioner

Staff present:

Lisa Sheppard, Executive Director and Secretary  
Bobby Collins, Director of Recreation and Facilities  
John Cutrera, Director of Finance and HR  
Kyle Kuhs, Director of Parks and Planning  
Erin Classen, Superintendent of Marketing and Comm.

Members of the public in attendance who signed in or spoke: Bill Aguiar, Michael Aitken, Katie B., Rich Bianco, Chad Billington, Cynthia Billington, Nick Capezio, Ira Chaplik, Kevin Dolan, Megan Dolan, Nicole Downie, Peter Downie, Rene Firmin, Tom Fraerman, Laura Friedman, David Gelfand, Jacqueline Goldin, Allison Harrington, Jackie Santiccioli, Alex Shaw, Carol Strickley, Kathy Sussman, David Witcoff, Lulu Witcoff

Consent Agenda: A motion was made by Commissioner Boron to approve the consent agenda items as presented including Minutes of November 21, 2023 Regular Board Meeting, Minutes of December 5, 2023 Committee of the Whole Meeting, FY2024-25 Regular Meeting Schedule, and Approval of the Bills. Commissioner Spector seconded the motion. No further discussion ensued. Roll call vote taken:

AYES: Boron, Covey, Schneider, Spector, Spain

NAYS: None

ABSENT: None

The motion passed.

Matters from the Public: There was no one wishing to address the Board at this time.

Presentation and Approval of Resolution No. 959: Jenny Runkel 10 Years of Service: A motion was made by Commissioner Boron to approve Resolution No. 959 for Jenny Runkel's 10 Years of Service as presented. The resolution was read and staff and Commissioners noted Jenny's skills and excellence these last 10 years. Commissioner Spector seconded the motion. No further discussion ensued. Roll call vote taken:

AYES: Boron, Covey, Schneider, Spector, Spain

NAYS: None

ABSENT: None

The motion passed.

Presentation and Discussion on Tennis and Pickleball Courts: Staff gave the presentation attached to these minutes and answered Board questions. During this agenda item's matters from the public, sixteen community members shared feedback for and against pickleball courts in Glencoe. Pros and cons included location, sound level, and playability of Weinberg Family Recreation Center temporary pickleball courts. Board discussion

ensued and staff answered Commissioners questions as needed. Commissioners requested additional information from staff and will revisit the topic at another meeting.

Financial Report: The District is ten months into the fiscal year. Director Cutrera gave a synopsis of the report. The budget process is moving forward nicely. No significant changes to the projections shared at the October 2023 Board meeting; leaving the District in a positive position.

Executive Director's Report: Executive Director Sheppard shared a summary of her report included in the Board packet. The budget will be presented at the next committee meeting. The District's extensive 2023 Year in Review highlights staff's dedication to strategic goals and creation of efficiencies. We received a portion of the awarded PARC grant funds. The ice rink's winter break was a success which is a large portion of the revenue for the season. The District is receiving only positive feedback on the facility to date. We are appreciative of South School housing our Kids Club program during construction and now that Kids Club is relocated to their new location, parents are appreciative of the additional space and equipment.

GYS and GJHP Stipend Request: Executive Director Sheppard gave a synopsis of the requests.

The District houses and makes repairs to the Glencoe Youth Services (GYS) facility. GYS does not duplicate our programming with the exception of YAP and SNAP programs as we are a partner of NSSRA.

Glencoe Jr High Project's (GJHP) OASIS daytime program is funded and housed by the school district. They are requesting funds for their after-school OASIS program. GJHP has duplication of serves in their fund-generating theatre program.

President Spain, following Board discussion, directed staff to include in the FY2024-25 Budget a GYS stipend for \$5,000 for their teen programming only and a GJHP stipend for \$5,000 for their after-school OASIS program only.

Action Items:

Approval of Beyond Your Base Agreement: A motion was made by Commissioner Boron to approve the Beyond Your Base agreement as presented. Commissioner Spector seconded the motion. This is the firm who will help the District with marketing and communication of our referendum. They did lower the amount of services and fees based on Board feedback, which is more in line with our needs. No further discussion ensued.

Roll call vote taken:

AYES: Boron, Covey, Schneider, Spector, Spain  
NAYS: None  
ABSENT: None

The motion passed.

Other Business: There was no other business.

Adjourn to Closed Session: At 8:52pm, Commissioner Boron moved to adjourn into closed session to discuss personnel – the appointment, employment, compensation, discipline, performance, or dismissal of specific employees as mandated by Section 2.06. 5 ILCS 120/2 (c)(1). Commissioner Spector seconded the motion, which passed by unanimous voice vote.

Return to Open Session: Commissioner Schneider moved to return to open session at 9:10pm, Commissioner Spector seconded the motion, which passed by unanimous voice vote.

Action taken, if any, from Executive Session: There was no action taken during or after closed session.

Adjourn: Commissioner Schneider moved to adjourn the meeting at 9:10pm. Commissioner Boron seconded the motion. The motion passes via voice vote.

Respectfully submitted,

---

Lisa M. Sheppard  
Secretary



# Pickleball Discussion

# Court Renovations Needed

Racquet courts at Shelton, Watts, West, and Berlin at the end of their useful life.

- The Board approved the renovation of two locations\* in FY24-25 budget
- The remaining two locations\* will be renovated in FY 25-26



# Dedicated Courts

Court is only available for play by one racquet sport.



# Hybrid Courts

Lines and nets are available for both tennis and pickleball play.

Locations **may have a mix of both dedicated and hybrid courts.**

# Decision time.

With a complete renovation of four locations happening in the next two years, **now** is the time to decide if we need more dedicated pickleball courts.

**If so, where?**





# NRPA Standards

## Court Guidelines from National Recreation and Park Association

### Pickleball

1 per 3,252 residents

### Tennis

1 per 2,805 residents

For Glencoe's 8,820 residents, **we need 3 pickleball courts and 4 tennis courts** to meet NRPA's Standard.



# We currently exceed NRPA Standards.

Location	Dedicated Tennis Courts	Hybrid Tennis Courts	Dedicated Pickleball Courts	Hybrid Pickleball Courts
Weinberg			6	
Watts	2	*		
Shelton		2		2
Lakefront	3			
Berlin	4			
West	1	2		4
<b>Total</b>	<b>10</b>	<b>4</b>	<b>6</b>	<b>6</b>
	<b>14</b>		<b>12</b>	
<b>NRPA Standard</b>	<b>4</b>		<b>3</b>	

*\*Watts has lines for 4 pickleball courts, but nets removed*





**Pickleball may be America's fastest growing sport, but it is not universally loved because of the noise it causes.**

**40 dBA**

Decibel level when tennis ball connects with racquet from 100 feet away

**70 dBA**

Decibel level when pickleball connects with racquet from 100 feet away



## Examples of Careful Abatement Design

An aerial photograph of a pickleball court complex. The complex consists of several courts: a large green court with three smaller green courts stacked vertically, and a blue court with four smaller blue courts stacked vertically. The courts are surrounded by a concrete pad. To the left of the courts is a dense line of trees, including several large, mature arborvitae trees. A yellow arrow points from the text 'Mature Arborvitae' to these trees. Another yellow arrow points from the text 'Rink Walls' to the concrete walls surrounding the courts. The surrounding area includes a parking lot with several vehicles and some construction equipment.

Mature  
Arborvitae

Rink  
Walls

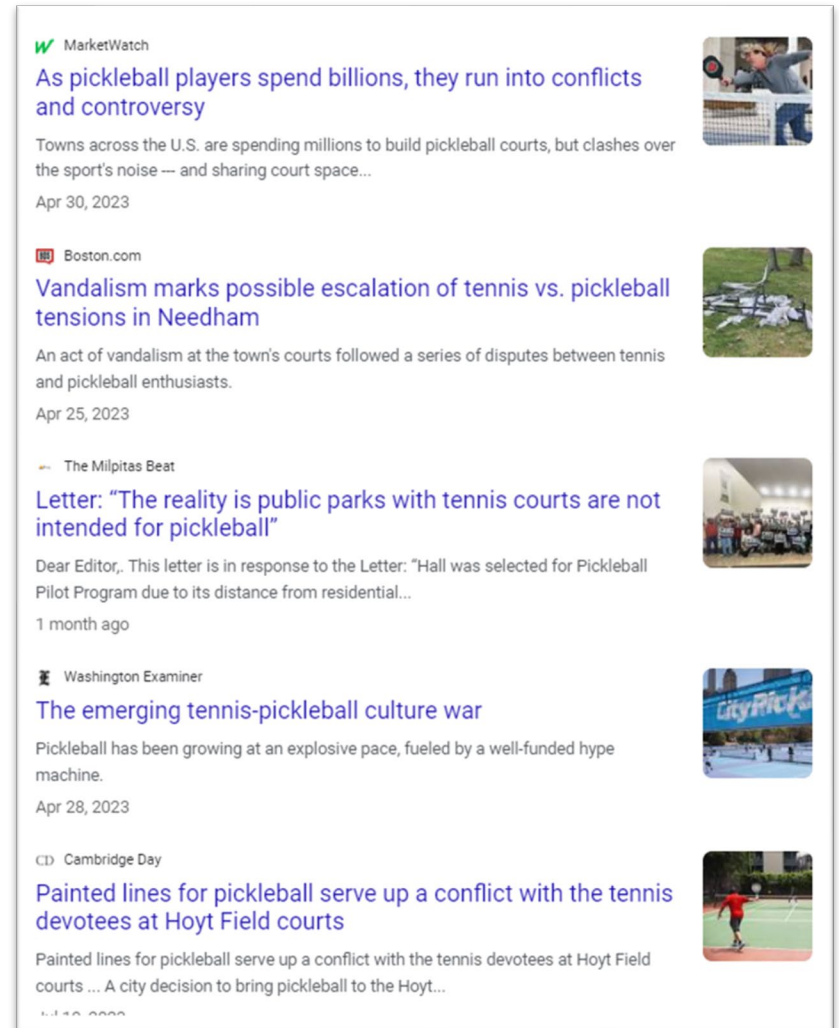
**Pickleball courts  
built within 350 feet of  
residential homes need  
some kind of sound  
reduction.**

**Those built within 150 feet  
need careful abatement  
design to avoid annoyance.**

# Hybrid Courts

The industry is seeing **too many** conflicts between tennis and pickleball players.

We **do not** recommend hybrid courts at this time.



**MarketWatch**  
**As pickleball players spend billions, they run into conflicts and controversy**  
Towns across the U.S. are spending millions to build pickleball courts, but clashes over the sport's noise — and sharing court space...  
Apr 30, 2023

**Boston.com**  
**Vandalism marks possible escalation of tennis vs. pickleball tensions in Needham**  
An act of vandalism at the town's courts followed a series of disputes between tennis and pickleball enthusiasts.  
Apr 25, 2023

**The Milpitas Beat**  
**Letter: "The reality is public parks with tennis courts are not intended for pickleball"**  
Dear Editor,, This letter is in response to the Letter: "Hall was selected for Pickleball Pilot Program due to its distance from residential...  
1 month ago

**Washington Examiner**  
**The emerging tennis-pickleball culture war**  
Pickleball has been growing at an explosive pace, fueled by a well-funded hype machine.  
Apr 28, 2023

**Cambridge Day**  
**Painted lines for pickleball serve up a conflict with the tennis devotees at Hoyt Field courts**  
Painted lines for pickleball serve up a conflict with the tennis devotees at Hoyt Field courts ... A city decision to bring pickleball to the Hoyt...  
Apr 28, 2023



# Pickleball Courts Neighbor Impact



# Berlin

4

homes within 300'  
radius of center court

22

homes within 500'  
radius of center court

- No pickleball currently offered
- Closest neighbor roughly **225'** from center court
- 6 buildings are commercial/apartment buildings
- Parking spots available: 69 spots on Greenwood/Grove, plus street parking on Park Avenue. **Parking availability limited during school hours**



# Berlin Court Usage

**3.1K**

visitors in the last 12 months

**53%**

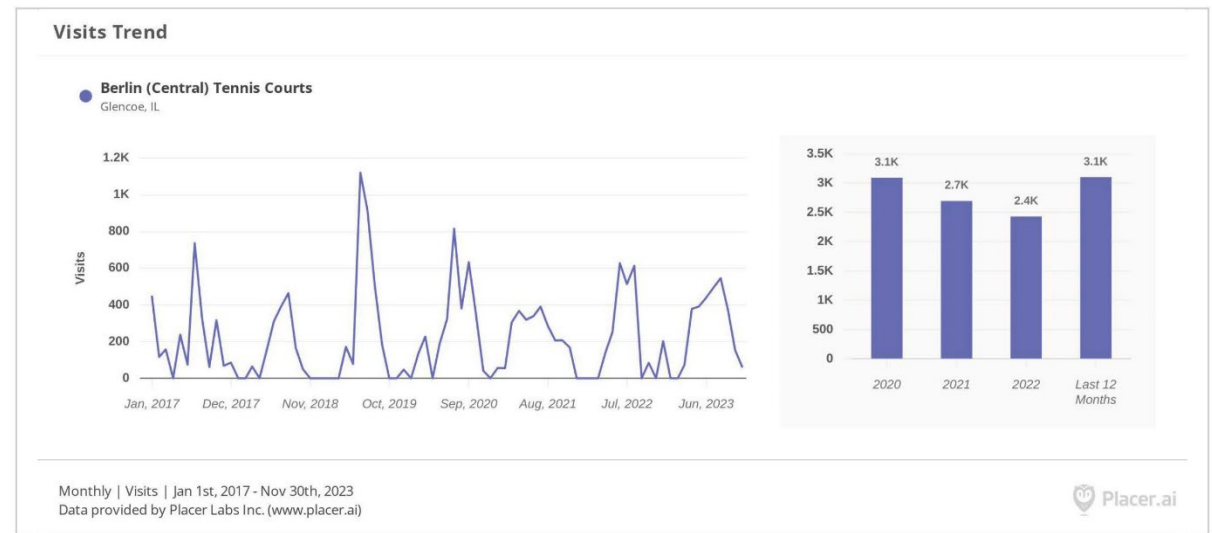
of visitors live within 2 miles of the courts

**48%**

of visitors are over age 55

## Visits Trend

Jan 1, 2017 - Nov 30, 2023



- Peak hours are between 2-5 PM
- Saturday is the busiest day
- Average visit is 74 minutes

# West

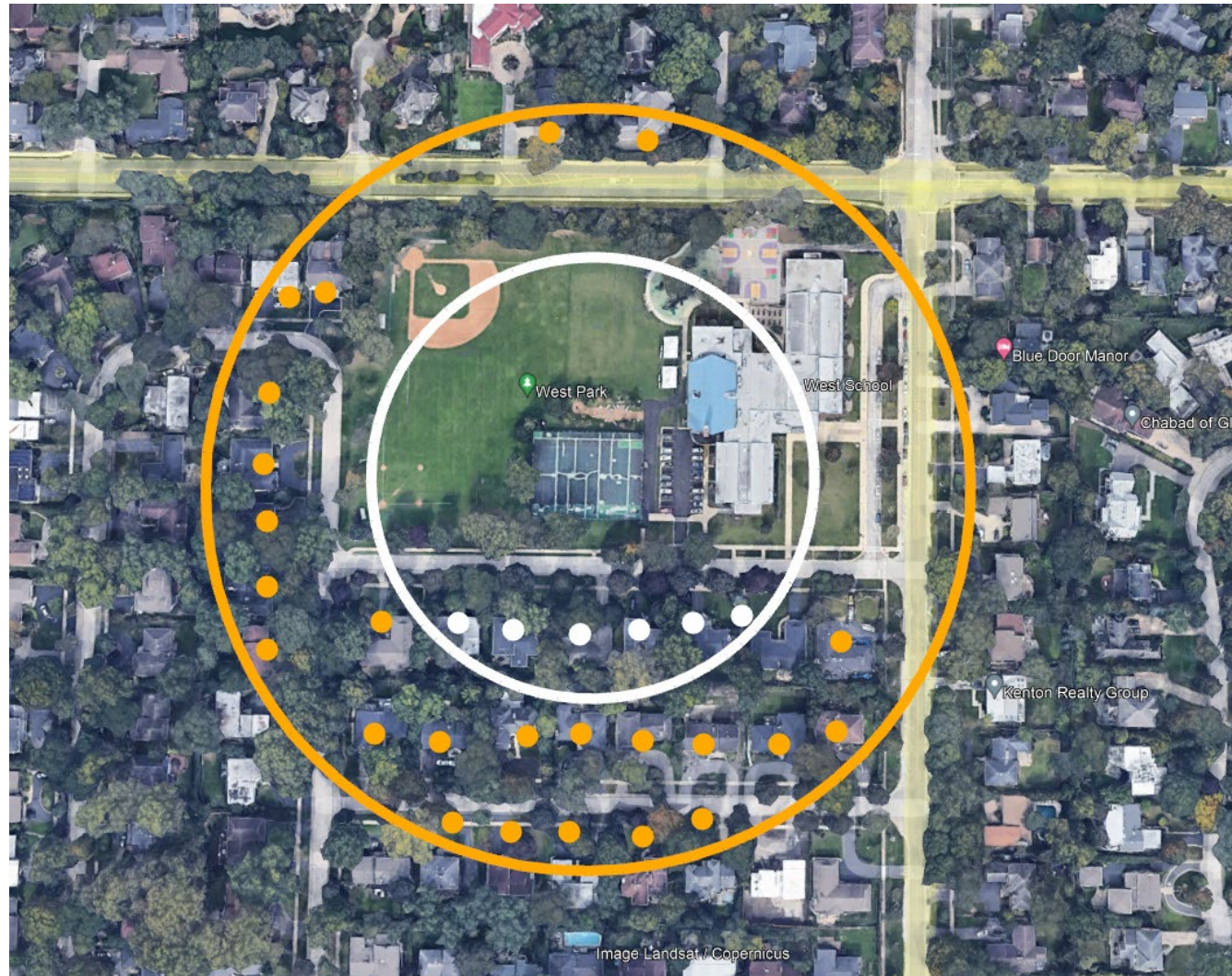
## 6

homes within 300'  
radius of center court

## 30

homes within 500'  
radius of center court

- Currently lined for mix use tennis/pickleball
- Closest neighbor roughly 175' from center court
- Parking spots available: 23 spots in school lot, plus street parking on Willow Tree.  
**Parking availability limited during school hours**





# West Court Usage

**8.8K**

visitors in the last 12 months

**41%**

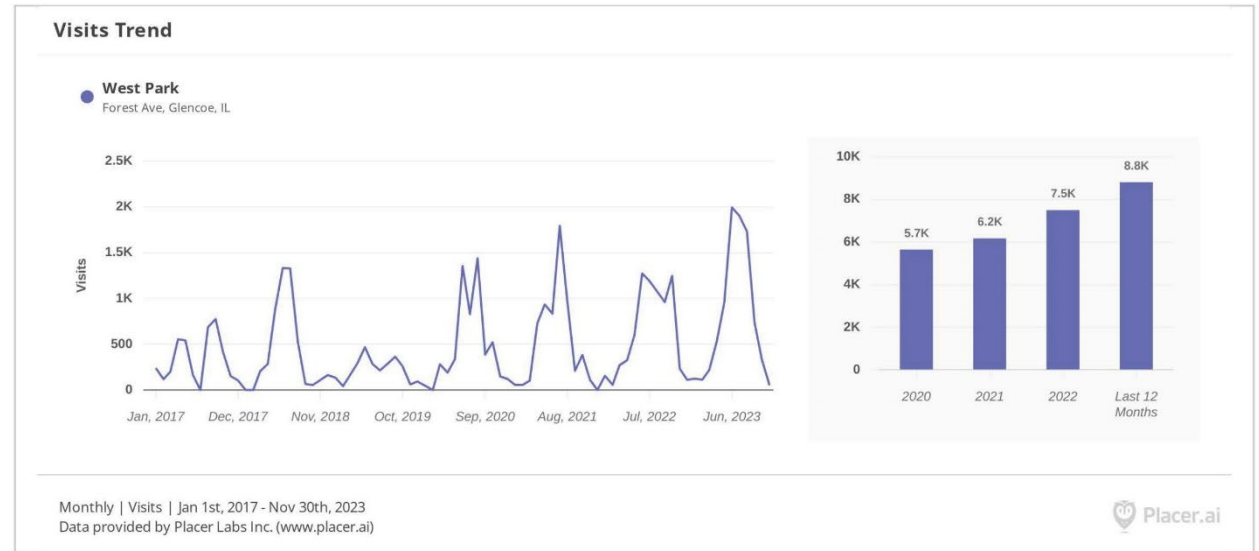
of visitors live within 2 miles of the courts

**35.1%**

of visitors are over age 55

## Visits Trend

Jan 1, 2017 - Nov 30, 2023



- Peak hours are 2-5 PM
- Saturday is the busiest day
- Average visit is 78 minutes

# Shelton

6

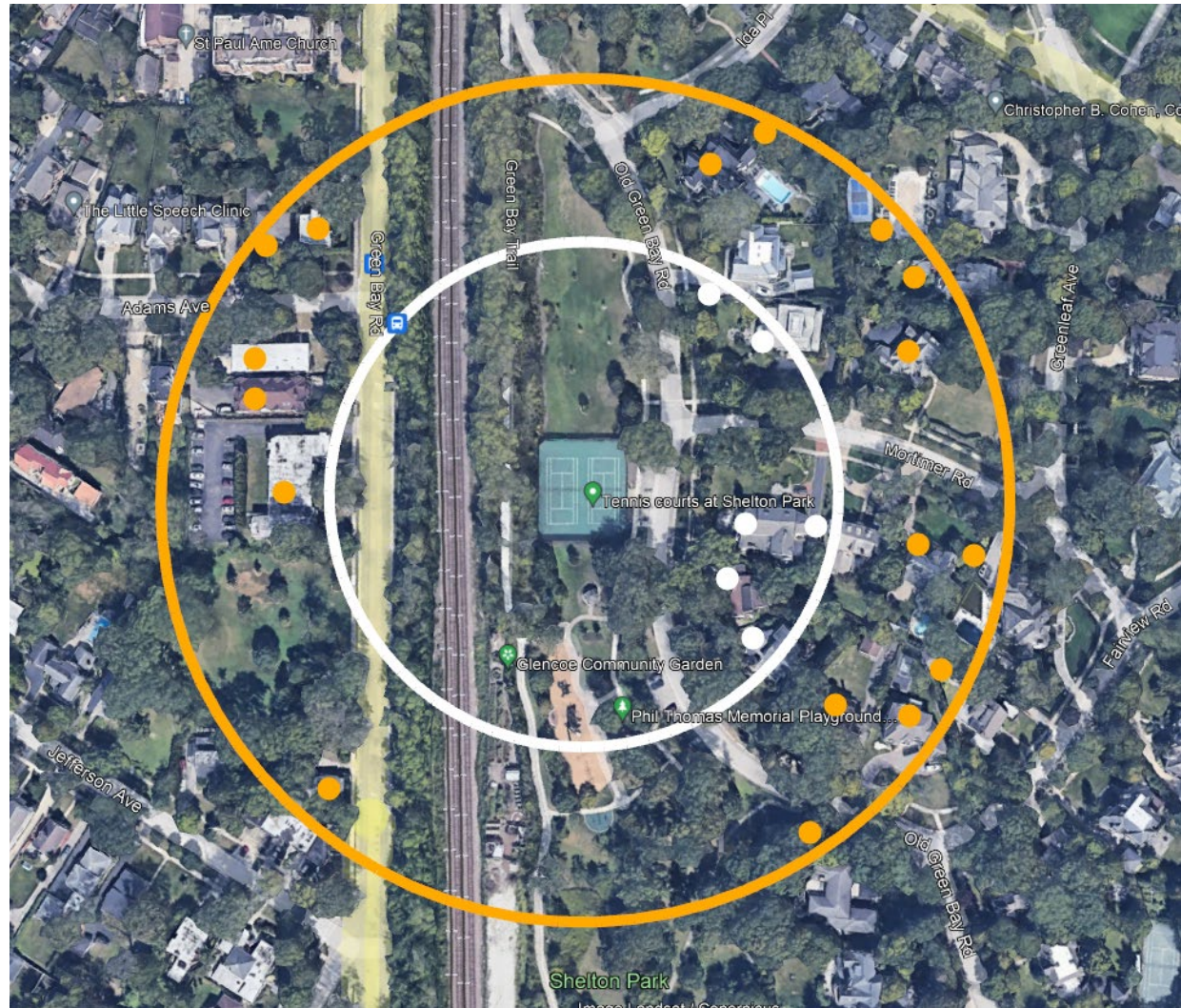
homes within 300'  
radius of center court

23

homes within 500' radius  
of center court

*17 homes if we exclude  
buffered properties\**

- Currently lined for mix tennis/ pickleball use
- Closest neighbor roughly **175'** feet from center court
- 6 neighbors\* to west buffered by Green Bay Trail, train tracks, and Green Bay Road
- Parking spots available: 21 spots, plus street parking on Old Green Bay Road.



# Shelton Court Usage

## 3.9 K

visitors in the last 12 months

## 68%

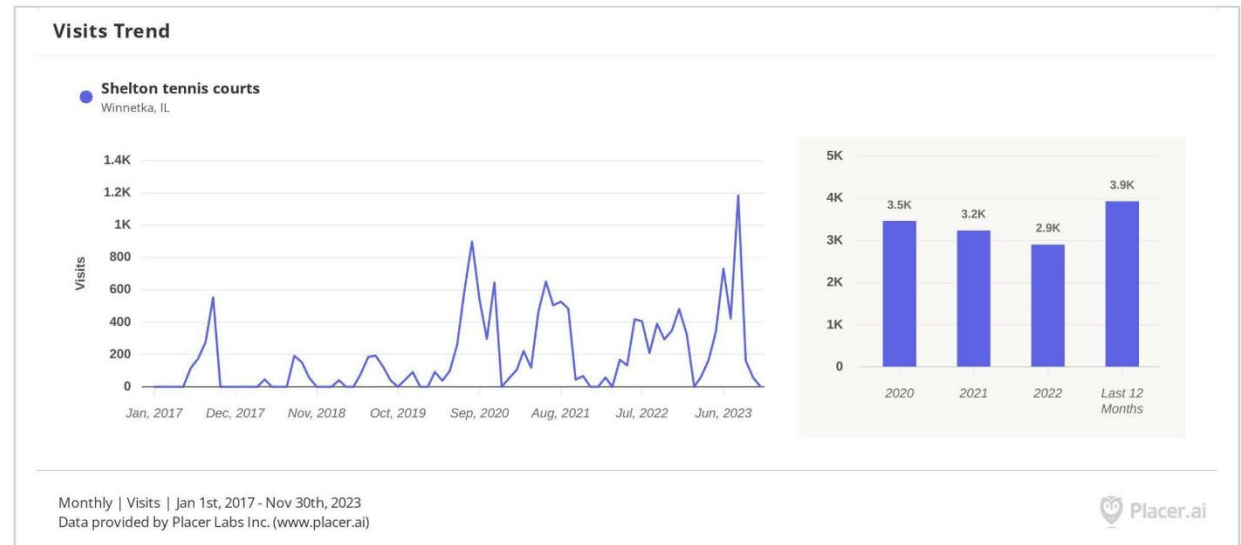
of visitors live within 2 miles of the courts

## 45%

of visitors are over age 55

### Visits Trend

Jan 1, 2017 - Nov 30, 2023



- Peak hours are between 10 AM-4 PM
- Tuesday & Saturdays are the busiest days
- Average visit is 63 minutes

# Watts

## 9

homes within 300'  
radius of center court

## 34

homes within 500'  
radius of center court

- Currently lined for mix tennis/  
pickleball use
  - Nets removed  
2023
- Closest neighbor  
roughly **125'** from  
center court
- 6 modular courts  
offered on ice rink
- Parking spots  
available: 25 spots,  
plus street parking  
on Randolph.



# Watts Court Usage

**4.8 K**

visitors in the last 12 months

**68.5%**

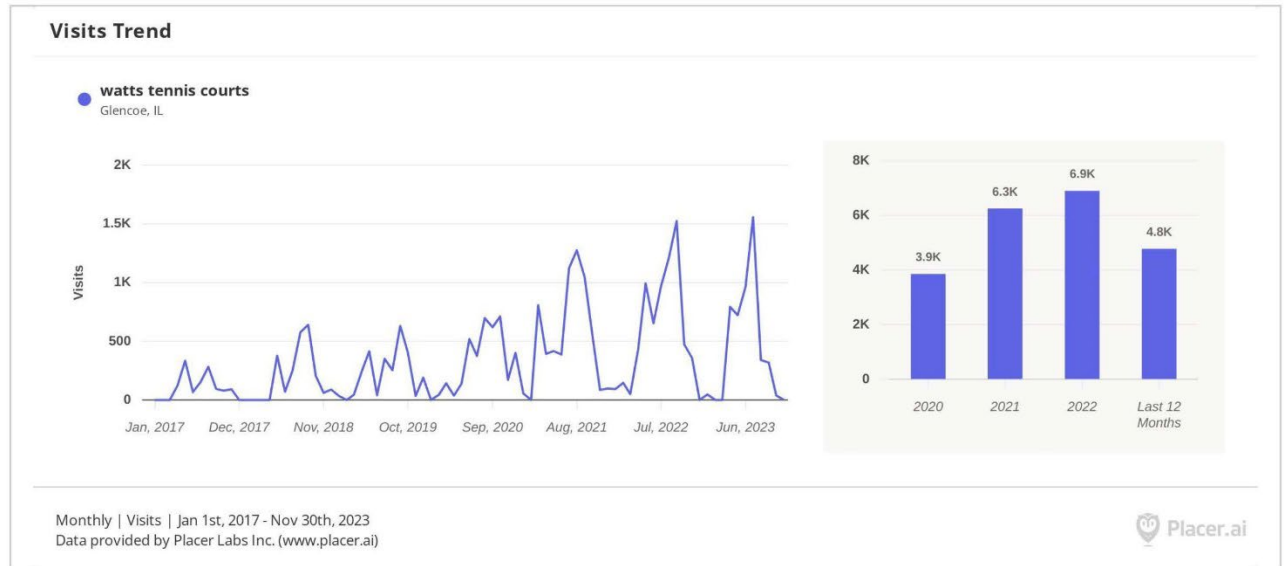
of visitors live within 2 miles of the courts

**47.2%**

of visitors are over age 55

## Visits Trend

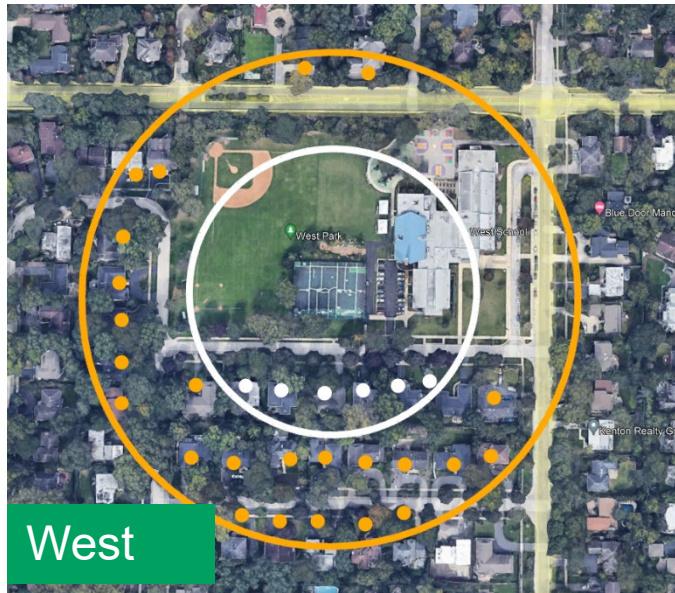
Jan 1, 2017 - Nov 30, 2023



- Peak hours are between 9 AM-5 PM
- Sunday is the busiest day
- Average visit is 88 minutes



Shelton



West



Watts



Central

## Discussion

Does the Board want to add more dedicated pickleball courts?

- If so, what location is preferred?
- How many courts are preferred?

# Court Summary

Location	Dedicated Tennis	Hybrid Courts Tennis/ Pickleball	Dedicated Pickleball	Homes within 300'/500'	Court Visitors in last 12 months	Parking
Lakefront	3	-	-	2/12	2K	96 spots
Weinberg	-	-	6	9/19	3.97K <i>Only includes 6 months</i>	25 spots + street parking on Randolph
Watts	2	*	-	9/34	4.8K	25 spots + street parking on Randolph
Shelton	-	2/2	-	6/23**	3.9K	21 spots + street parking on Old Green Bay
Berlin	4	-	-	4/22	3.1K <i>Does not include school usage</i>	69 spots + street parking on Park. <b>Limited during school hours</b>
West	1	2/4	-	6/30	8.8 K <i>Does not include school usage</i>	23 spots + street parking on Willow. <b>Limited during school hours</b>
<b>Total</b>	<b>10</b>	<b>4/6</b>	<b>6</b>			
NRPA Standard	3	N/A	4			

*\*Watts has lines for 4 pickleball courts, but nets removed*

*\*\*6 neighbors to west buffered by Green Bay Trail, train tracks, and Green Bay road*





**GLENCOE  
PARK DISTRICT**

[glencoe parkdistrict.com](http://glencoe parkdistrict.com)





# Weinberg Family Recreation Center



9

homes within  
300' radius of  
center court

19

homes within  
500' radius of  
center court

6

modular courts  
offered on ice  
rink seasonally

# Weinberg Family Recreation Center

## 3.97 K

visitors in 6 months

## 54%

of visitors live within 2 miles of the courts

## 48.3%

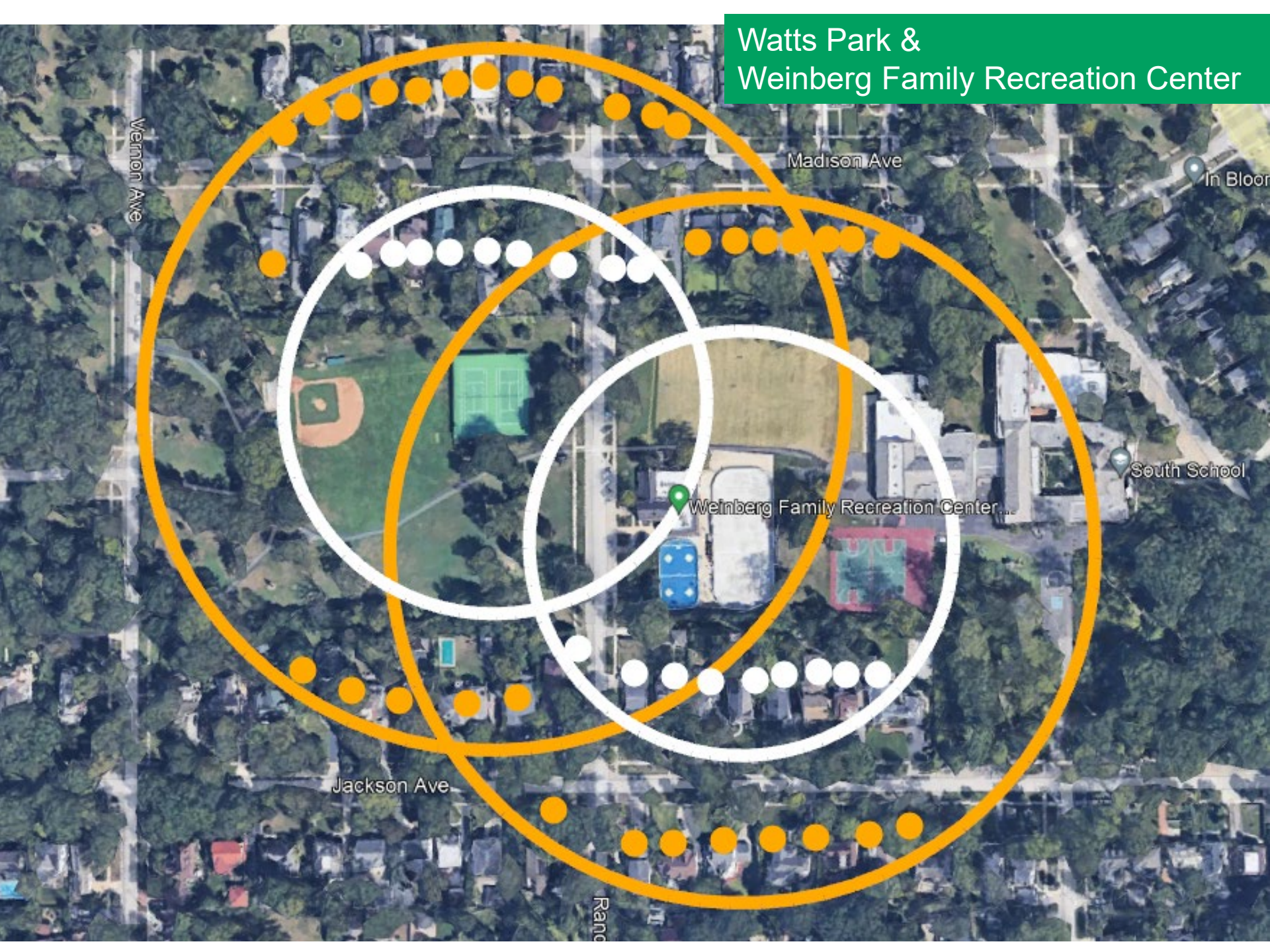
of visitors are over age 55

### Pickleball on the Main Rink First Season Visitors (5/8-10/23)



- Peak hours are between 9-11 AM and 6-8 PM
- Friday and Saturdays are the busiest days
- Average visit is 65 minutes

# Watts Park & Weinberg Family Recreation Center



Vernon Ave

Madison Ave

In Bloom

South School

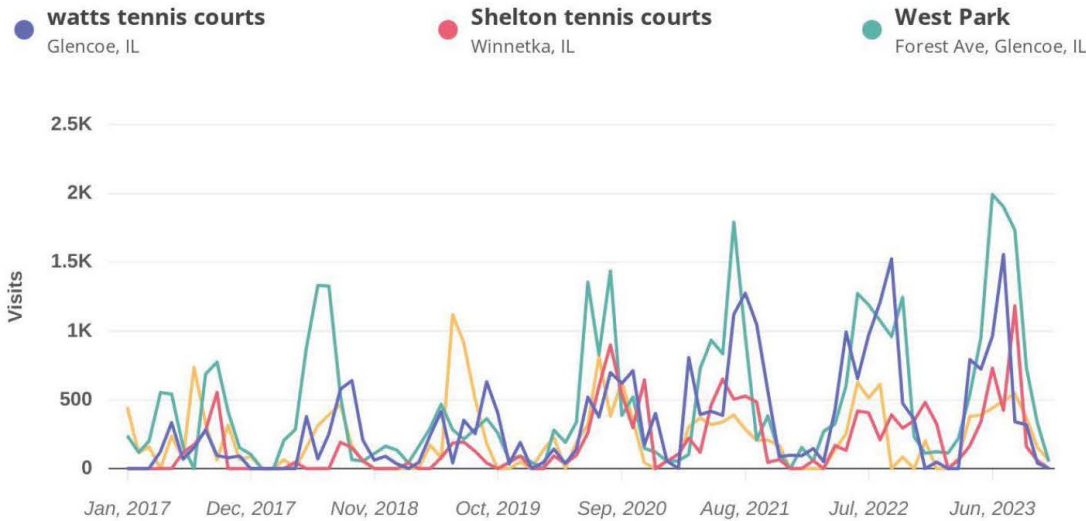
Weinberg Family Recreation Center...

Jackson Ave

Randolph Ave

# Visitor Summary

## Visits Trend



	2020	2021	2022	Last 12 Months
<span style="color: blue;">■</span>	3.9K	6.3K	6.9K	4.8K
<span style="color: red;">■</span>	3.5K	3.2K	2.9K	3.9K
<span style="color: green;">■</span>	5.7K	6.2K	7.5K	8.8K
<span style="color: orange;">■</span>	3.1K	2.7K	2.4K	3.1K

Monthly | Visits | Jan 1st, 2017 - Nov 30th, 2023  
Data provided by Placer Labs Inc. ([www.placer.ai](http://www.placer.ai))



# Visitor Summary

## Property Overview

Jan 1, 2017 - Nov 30, 2023

### Metrics

Metric Name	watts tennis courts Glencoe, IL	Shelton tennis courts Winnetka, IL	West Park Forest Ave, Glencoe, IL	Berlin (Central) Tennis Courts Glencoe, IL
Visits	27.9K	15.4K	39.6K	18.4K
Visitors	2.2K	1.7K	4.4K	2.1K
Visit Frequency	12.81	8.88	8.91	8.9
Avg. Dwell Time	88 min	63 min	78 min	74 min

